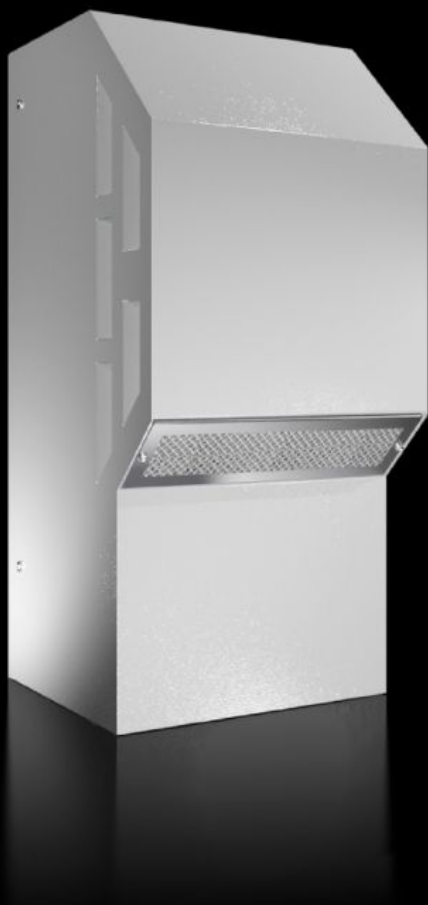


Rittal – The System.

Faster – better – everywhere.



SK 3303.518

TopTherm wall-mounted cooling unit Blue e, UL Type 3R/4

State: 08/09/2025 (Source: rittal.com/gr-en)

ENCLOSURES

POWER DISTRIBUTION

CLIMATE CONTROL

IT INFRASTRUCTURE

SOFTWARE & SERVICES

FRIEDHELM LOH GROUP



SK 3303.518 - TopTherm wall-mounted cooling unit

Blue e, UL Type 3R/4 0.5 - 2.5 kW

Energy-efficient Blue e wall-mounted cooling units in output categories 500 W to 2,500 W with integral e-Comfort controller and electric condensate evaporation (from 1000 W) as standard, protection category UL Type 3R/4, 12.



Features

| | |
|---------------------|---|
| Model No. | SK 3303.518 |
| Design | wall-mounted |
| Product description | Energy-efficient Blue e wall-mounted cooling units with integral e-Comfort controller and electric condensate evaporation as standard. Protection category UL Type 3R/4, 12. |
| Benefits | Suitable for outdoor siting Blue e technology May be linked to the IoT interface via Blue e IoT adaptor for cooling units from 500 W cooling output with e-Comfort controller |
| Material | Sheet steel |
| Colour | RAL 7035 |
| Supply includes | Condenser with hydrophobic RiNano coating Fully wired ready for connection (plug-in terminal strip) Drilling template Assembly parts |

Features

| | |
|--|---|
| Total cooling output to DIN EN 14511 | Cooling output L35 L35/60 Hz: 0.5 kW Cooling output L35 L50/60 Hz: 0.28 kW |
| Rated operating voltage | 115 V, 1~, 60 Hz |
| Rated current max. | At 60 Hz: 5.7 A |
| Start-up current max. | At 60 Hz: 11.5 A |
| Air throughput (unimpeded air flow) | External circuit: 345 m³/h Internal circuit: 280 m³/h |
| Energy efficiency ratio (EER) 50/60 Hz L35 L35 | Refrigeration factor L35 L35 (EER) 50 Hz: 1.3 Refrigeration factor L35 L35 (EER) 60 Hz: 1.35 |
| Design | wall-mounted |
| Dimensions | Width: 285 mm Height: 620 mm Depth: 298 mm |
| Protection category to IEC 60 529 | External circuit IP 34 Internal circuit IP 56 |
| Protection category NEMA | UL Type 3R UL Type 4 UL Type 12 |
| Refrigerant/cooling medium | Refrigerant: R-513A Quantity: 0.19 kg Global Warming Potential (GWP): 631 CO2 equivalent (CO2e): 0.12 t |
| Temperature control | e-Comfort controller (factory setting +35 °C) |
| Operating temperature range | -20 °C...50 °C |
| Operating temperature max @60 Hz | 50 °C |
| Operating temperature | Compressor cooling mode from +10 °C ambient temperature. Only the internal fan is active in the temperature range -20 °C to +10 °C. |
| Storage temperature range | -40 °C...70 °C |
| Setting range | 20 °C...50 °C |
| Power consumption Pel | Power consumption L35 L35/60 Hz: 0.37 kW Power consumption L35 L50/60 Hz: 0.45 kW |

Features

| | |
|--|---|
| Permissible operating pressure (p. max.) | 28 bar |
| Pre-fuse | Miniature circuit-breaker/fuse: 10 A |
| Note on Model No. | without integral condensate evaporation |
| Packs of | 1 pc(s). |
| Net weight | 30.5 |
| Gross weight | 36.5 |
| Customs tariff number | 84158200 |
| EAN | 4028177943681 |
| ETIM 9 | EC000855 |
| ETIM 8 | EC000855 |
| ECLASS 8.0 | 27180704 |

Approvals

| | |
|--------------|---|
| Approvals | C-UL UL + C-UL (listed) UL + C-UL - FTTA |
| Certificates | EAC |
| Explanations | Declaration of conformity Declaration of conformity - F-gas regulation Declaration of conformity UK |