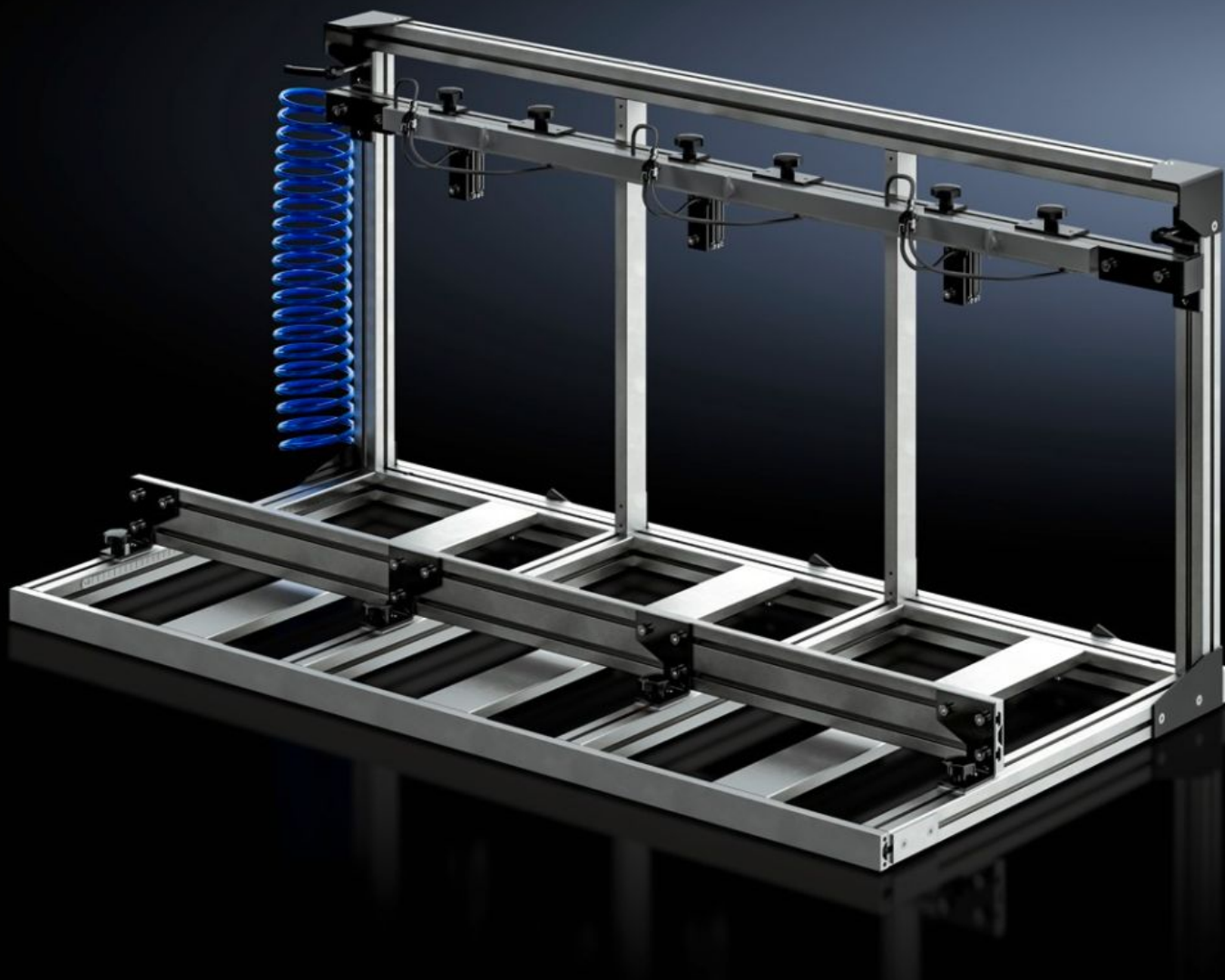


Rittal – The System.

Faster – better – everywhere.



AS 4050.080 Clamping frame

State: 08/12/2025 (Source: rittal.com/gr-en)

ENCLOSURES

POWER DISTRIBUTION

CLIMATE CONTROL

IT INFRASTRUCTURE

SOFTWARE & SERVICES

FRIEDHELM LOH GROUP



AS 4050.080 - Clamping frame

Parallel machining of enclosures in the cube machining zone of Perforex machining centres BC and Perforex milling terminals MT for shorter setup times and enhanced productivity.

Features

Model No.	AS 4050.080
Design	Pneumatic clamping device
Product description	Enables parallel cube machining of enclosures on Perforex machining centres BC and Perforex milling terminals MT.
Possible number of terminal Boxes for parallel processing	3
Note	Use of the clamping frame (Model No. 4050.080) in the machining centre BC (Model No. 4050.230) is only possible with the two-door variant.
To fit Model No.	4050.108 4050.230 4055.925 4055.926
Suitable for	Perforex BC 1008 HS Perforex BC 2014 HS Perforex MT 2201 Perforex MT 2201 S
Dimensions of clampable enclosures max.	Width: 510 mm Height: 510 mm Depth: 600 mm
Dimensions of clampable enclosures min.	Width: 80 mm Height: 100 mm Depth: 80 mm
Packs of	1 pc(s).
Net weight	25
Gross weight	25
Customs tariff number	84669360

Features

EAN	4028177804494
ETIM 9	EC003010
ETIM 8	EC003010
ECLASS 8.0	36609190