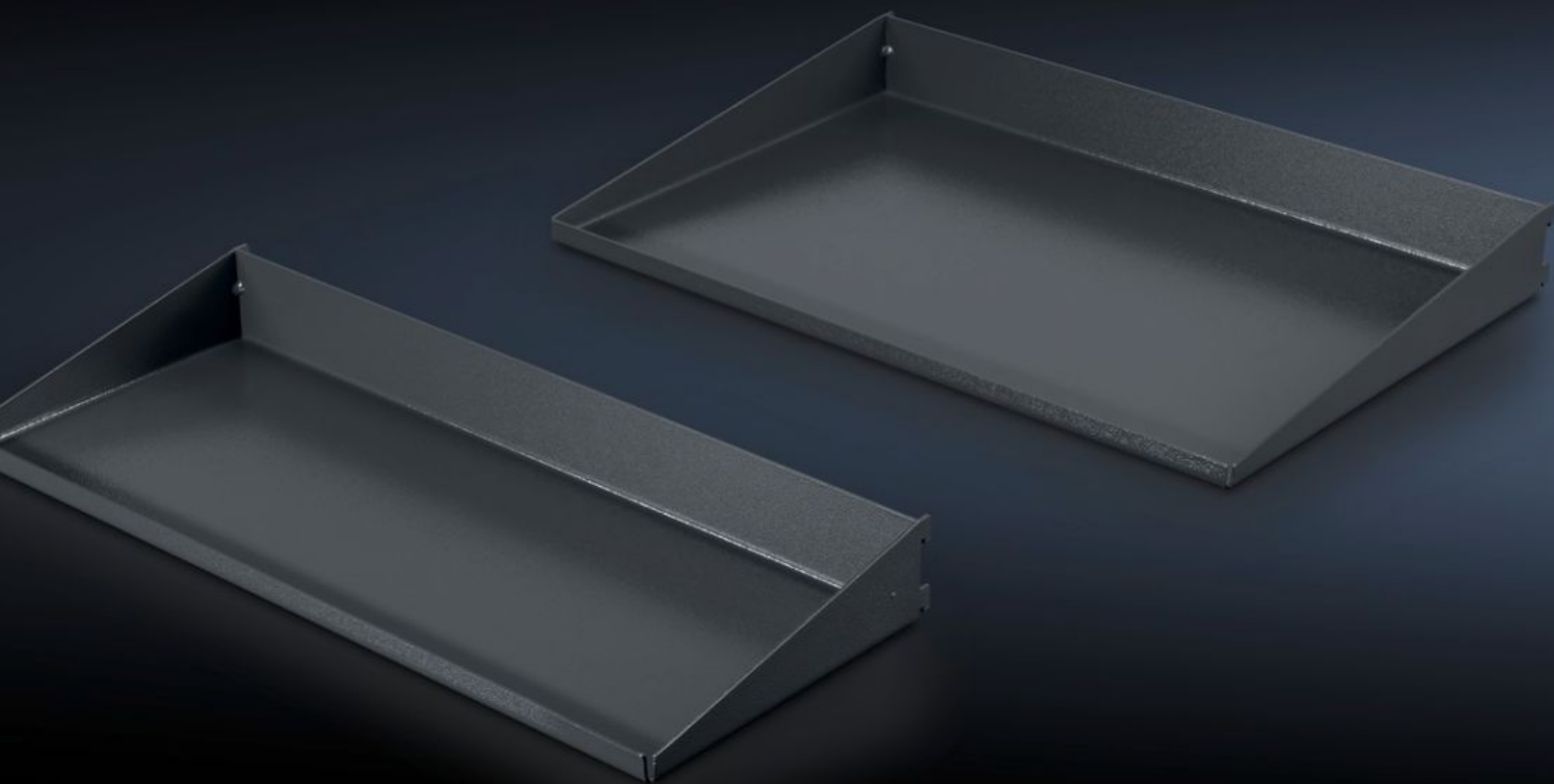


Rittal – The System.

Faster – better – everywhere.



AS 4051.101 Shelf

State: 06/09/2025 (Source: [rittal.com/gr-en](https://www.rittal.com/gr-en))

ENCLOSURES

POWER DISTRIBUTION

CLIMATE CONTROL

IT INFRASTRUCTURE

SOFTWARE & SERVICES

FRIEDHELM LOH GROUP



AS 4051.101 - Shelf for WS 540

Shelf set for mounting below the desktop. Different shelf depths allow ample knee and leg room for seated working at the workstation.



Features

Model No.	AS 4051.101
Product description	Shelf set for mounting below the desktop. Different shelf depths provide ample knee and leg room for seated working at the workstation.
Benefits	For optimum use of the space beneath the desktop without restricting legroom Tool-free mounting of the shelves by simply hanging in place
Technical specifications	Top shelf (W x D): 510 x 335 mm Bottom shelf (W x D): 510 x 200 mm
Material	Sheet steel
Colour	RAL 7016
Supply includes	2 shelves
To fit Model No.	4051.100
Packs of	2 pc(s).
Customs tariff number	73269098
EAN	4028177957411
ETIM 9	EC002778
ETIM 8	EC002778
ECLASS 8.0	21109215