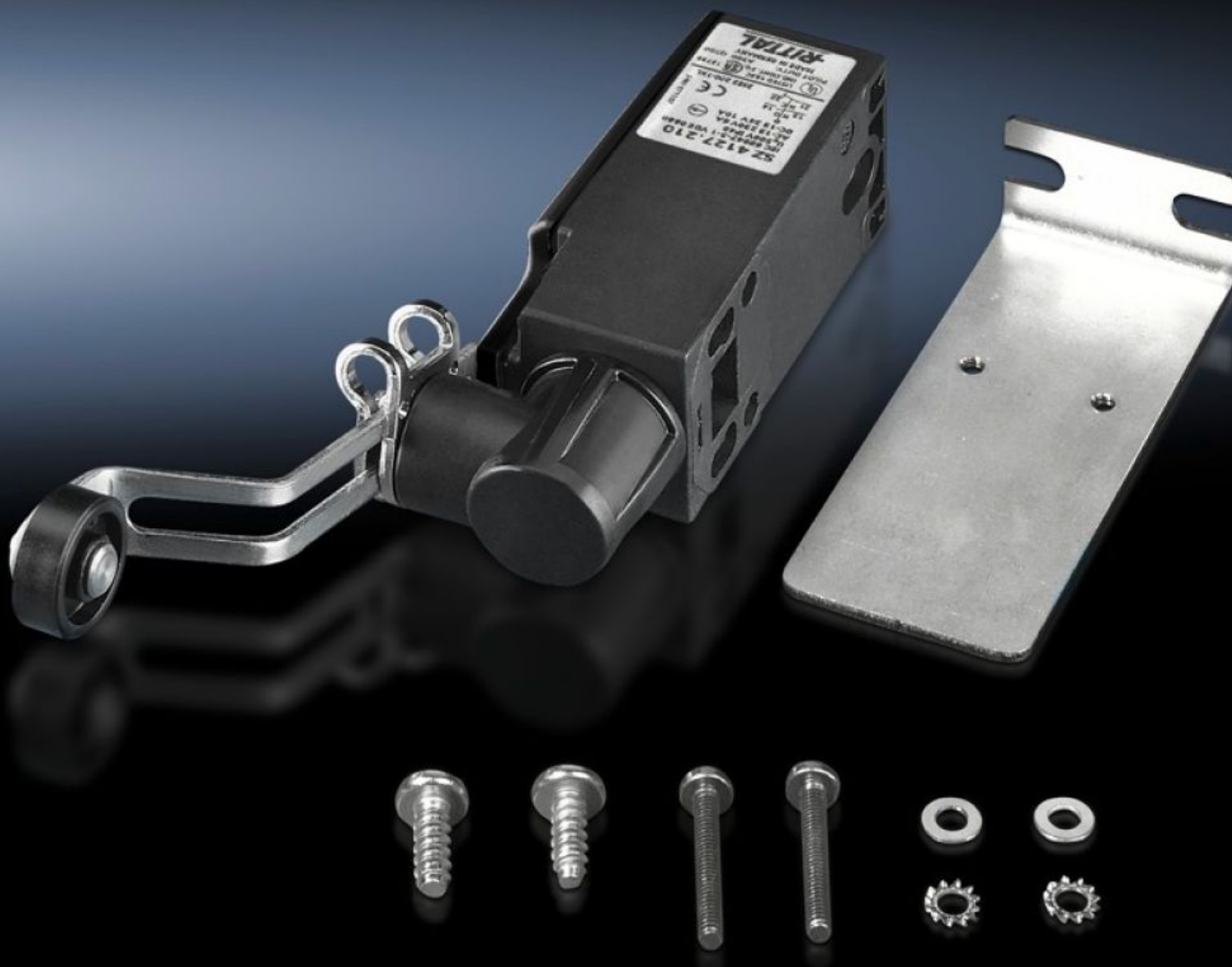


# Rittal – The System.

Faster – better – everywhere.



## SZ 4127.210 Door-operated switch

State: 10/08/2025 (Source: [rittal.com/gr-en](http://rittal.com/gr-en))

ENCLOSURES

POWER DISTRIBUTION

CLIMATE CONTROL

IT INFRASTRUCTURE

SOFTWARE & SERVICES

FRIEDHELM LOH GROUP



# SZ 4127.210 - Door-operated switch

with mounting accessories, with or without connection cable.

## Features

Model No.	SZ 4127.210
Design	with toggle for swing frame, without connection cable
Function principle	The toggle is actuated via the tubular door frame of the sheet steel door, or in the case of glazed doors, via an adaptor included with the supply.
Note	For installation in VX IT only in conjunction with VX mounting bracket for door-operated switch
Rated impulse withstand voltage, phase to phase	6000 V AC
Rated insulation voltage	400 V AC
Installation options	for TS enclosures with installed large swing frame for standard and courtesy light
Electrical connection	240 V AC/6 A 125 V AC/8 A 24 V AC/6 A 24 V DC/6 A
Rated operating voltage	400 V
IP protection category to IEC 60 529	IP 40
Packs of	1 pc(s).
Net weight	0.231
Gross weight	0.235
Customs tariff number	85365019
EAN	4028177581326
ETIM 9	EC002626
ETIM 8	EC002626

# Features

---

ECLASS 8.0	27189266
------------	----------

# Approvals

---

Approvals	CQC CQC-CCC CSA UL + C-UL (listed)
Explanations	Declaration of conformity Declaration of conformity UK

---