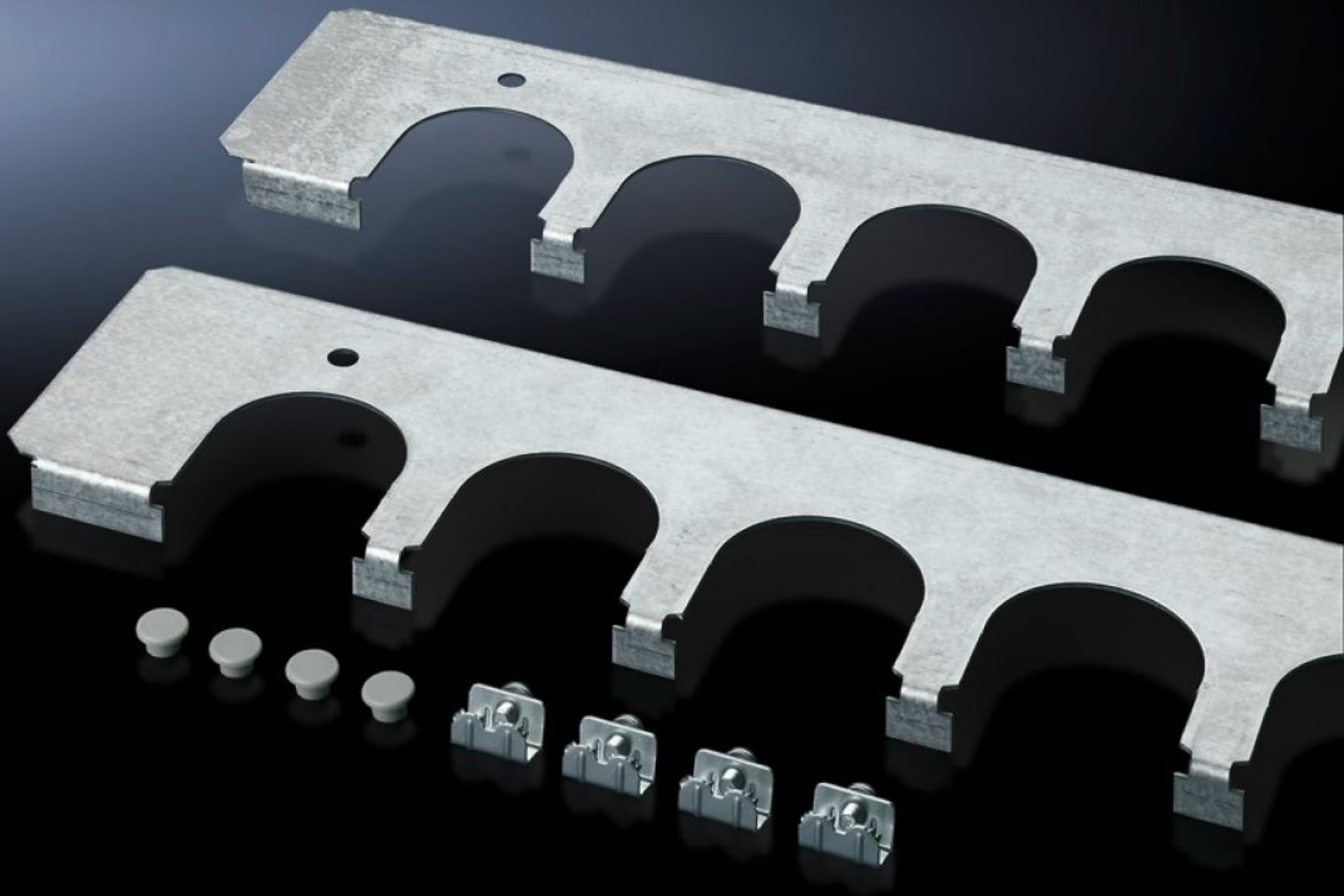


Rittal – The System.

Faster – better – everywhere.



SZ 5001.237

Cable entry plates

State: 04/11/2025 (Source: rittal.com/gr-en)

ENCLOSURES

POWER DISTRIBUTION

CLIMATE CONTROL

IT INFRASTRUCTURE

SOFTWARE & SERVICES

FRIEDHELM LOH GROUP



SZ 5001.237 - Cable entry plates for installation in TP TopConsole system

Secure cable routing in conjunction with cable entry grommets, connector grommets. Fitted instead of standard gland plates.

Features

Model No.	SZ 5001.237
Product description	Secure cable routing in conjunction with cable entry grommets, connector grommets. Fitted instead of standard gland plates.
Material	Sheet steel
Surface finish	Zinc-plated
Supply includes	Assembly parts
To fit	Enclosure type: TP: = 1,600 mm
Packs of	1 pc(s).
Net weight	0.839
Gross weight	0.84
Customs tariff number	73269098
EAN	4028177556881
ETIM 9	EC002620
ETIM 8	EC002620
ECLASS 8.0	27189261