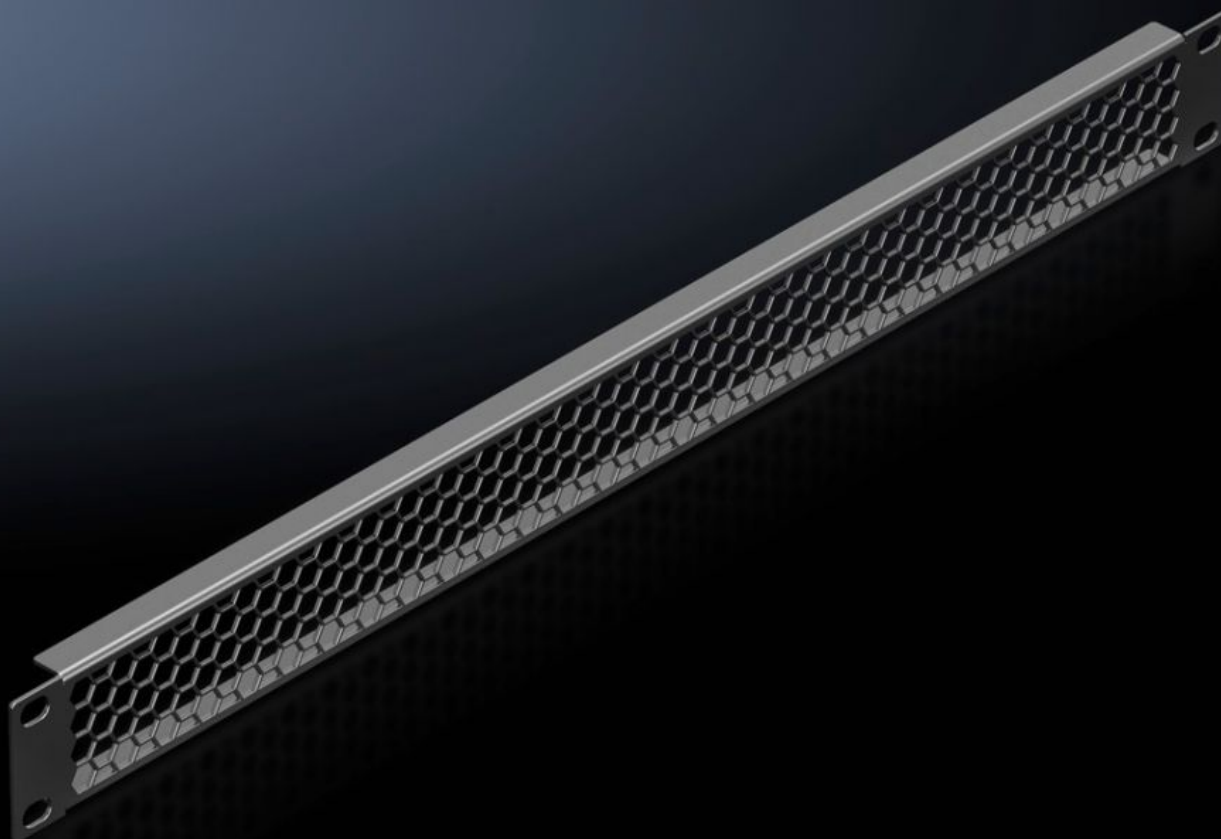


# Rittal – The System.

Faster – better – everywhere.



## IT 5302.201

## Vent trim panel, 482.6 mm (19")

State: 18/09/2025 (Source: [rittal.com/gr-en](https://www.rittal.com/gr-en))

ENCLOSURES

POWER DISTRIBUTION

CLIMATE CONTROL

IT INFRASTRUCTURE

SOFTWARE & SERVICES

FRIEDHELM LOH GROUP



# IT 5302.201 - Vent trim panel, 482.6 mm (19")

For venting enclosures and housings.

## Features

Model No.	IT 5302.201
Product description	For targeted air infeed from the front zone into the 482.6 mm (19") level.
Benefits	Vented surface area approx. 85 % perforated
Applications	Targeted routing of cold air from the raised floor via the front to the rear for cooling separate components
Material	Sheet steel
Surface finish	Spray-finished
Colour	RAL 9005
Installation dimensions	Installation depth for components: 482.6 mm Installation width for components: 19"
Units	1 U
Packs of	1 pc(s).
Net weight	0.234
Gross weight	0.237
Customs tariff number	94039910
EAN	4028177952898
ETIM 9	EC000331
ECLASS 8.0	27189272