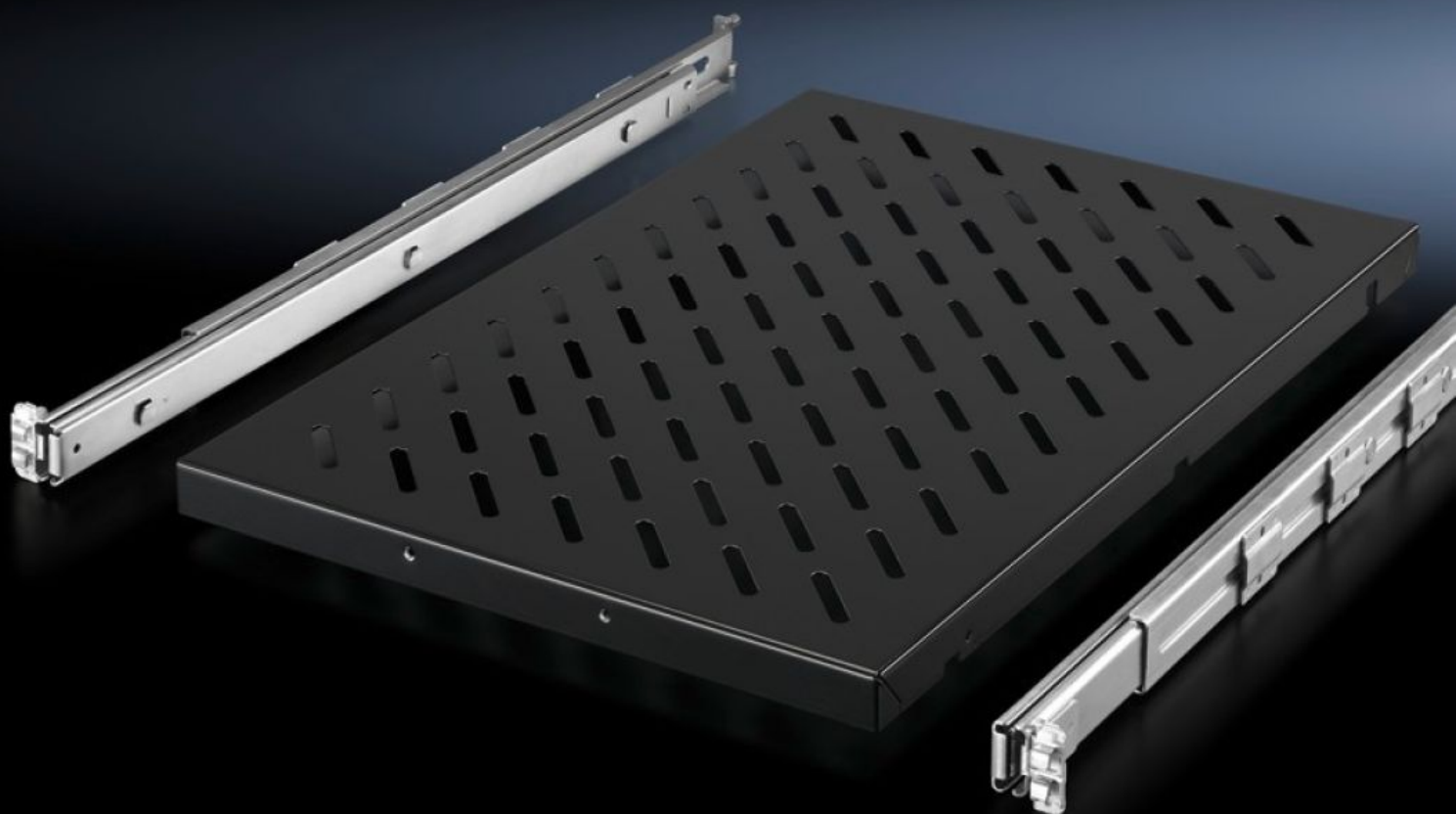


# Rittal – The System.

Faster – better – everywhere.



## DK 5501.715

### Component shelf, pull-out

State: 06/02/2026 (Source: [rittal.com/gr-en](https://www.rittal.com/gr-en))

ENCLOSURES

POWER DISTRIBUTION

CLIMATE CONTROL

IT INFRASTRUCTURE

SOFTWARE & SERVICES

FRIEDHELM LOH GROUP



# DK 5501.715 - Component shelf, pull-out for VX IT, TS IT, TE, TX CableNet

For mounting between two 482.6 mm (19") mounting angles.



## Features

|                     |   |
|---------------------|---|
| Model No.           | DK 5501.715   |
| Product description | For mounting between two 482.6 mm (19") mounting levels, on 482.6 mm (19") mounting angles or 482.6 mm (19") mounting frames. |
| Benefits            | Tool-free, time-saving one-man assembly from the enclosure front<br>Self-locking<br>Fully extendible                          |
| Applications        | Depth-variable to adapt to individual distances between levels  |
| Material            | Sheet steel   |
| Surface finish      | Base: Spray-finished<br>Telescopic slides/installation kit: Zinc-plated   |
| Colour              | RAL 9005  |
| Supply includes     | Component shelf, slotted<br>Telescopic slide with mounting kit<br>Assembly parts  |
| Applications        | For larger distances between levels, you will need to reduce the preconfigured distance, load capacity 100 kg.                |
| Load capacity       | 100 kg  |

# Features

|                               |  |
|-------------------------------|--|
| Dimensions                    | Width: 419 mm<br>Depth: 500 mm   |
| To fit                        | Enclosure type: VX IT<br>TS IT<br>TE   |
| Distance between levels       | 400 - 600 mm   |
| Packs of                      | 1 pc(s).   |
| Net weight                    | 6.7  |
| Gross weight                  | 7  |
| PCF per pack (cradle-to-gate) | 26.7 kg CO2 eq (Cat B)   |
| Note on PCF category          | Category B: PCF value (cradle-to-gate) based on the product weight, approximately calculated and self-declared |
| Customs tariff number         | 73269098   |
| EAN                           | 4028177679153  |
| E-Number Sweden               | E7239596   |
| ETIM 9                        | EC002620   |
| ECLASS 8.0                    | 27189261   |

# Tender text

482.6 mm (19") - component shelf, pull-out

482.6 mm component shelf, with telescopic slide, for L-shaped mounting angles and similar mounting angle shapes. For mounting between two 482.6 mm (19") mounting angles. Complete kit including depth-variable installation kit for 482.6 mm (19") mounting levels from 400 to 600 mm.

Tool-free, accessory-free, time-saving one-man assembly from the enclosure front.

Locate, pull-out, snap into position.

Perforated component shelf surface to support climate control inside the enclosure. The component shelf is self-locking, fully extendible.

Component shelf depth 500 mm, load capacity 100 kg, component shelf height 1 1/2 U.

Material: Sheet steel

Surface finish: Spray finished

Colour: RAL 9005

Model No. DK: 5501.715