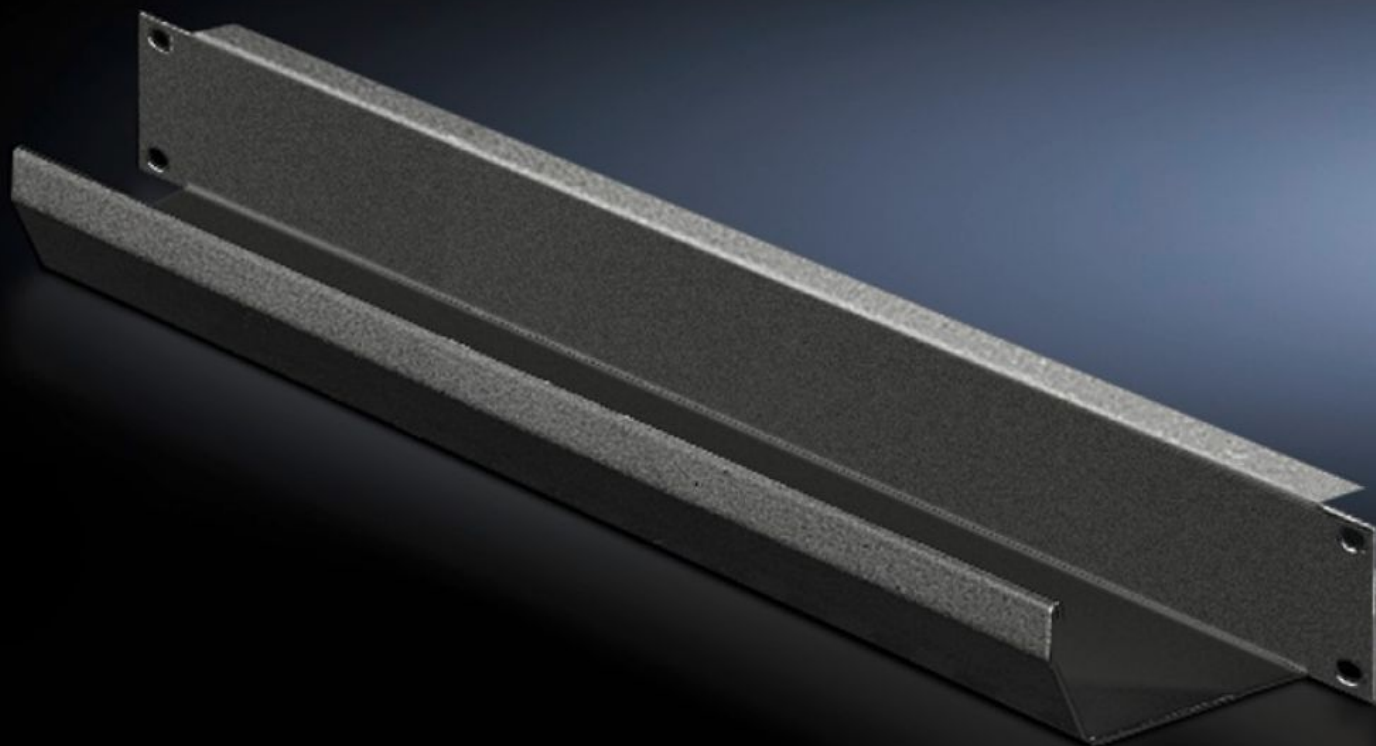


Rittal – The System.

Faster – better – everywhere.



DK 5502.245

Cable routing channel

State: 22/02/2026 (Source: [rittal.com/gr-en](https://www.rittal.com/gr-en))

ENCLOSURES

POWER DISTRIBUTION

CLIMATE CONTROL

IT INFRASTRUCTURE

SOFTWARE & SERVICES

FRIEDHELM LOH GROUP



DK 5502.245 - Cable routing channel 482.6 mm (19")

To hold the patching cables.

Features

Model No.	DK 5502.245
Product description	To hold the patching cables.
Material	Sheet steel
Surface finish	Spray-finished
Colour	RAL 9005
Dimensions	Width: 482.6 mm Depth: 85 mm
Units	1 U
Packs of	1 pc(s).
Net weight	0.9 kg
Gross weight	1.033 kg
PCF per pack (cradle-to-gate)	3.9 kg CO2 eq (Cat B)
Note on PCF category	Category B: PCF value (cradle-to-gate) based on the product weight, approximately calculated and self-declared
Customs tariff number	83024200
ETIM 9	EC000322
ECLASS 8.0	27400604
Product description	DK Cable routing channel, WHD: 482.6 mm (19")x1 Ux85 mm, RAL 9005