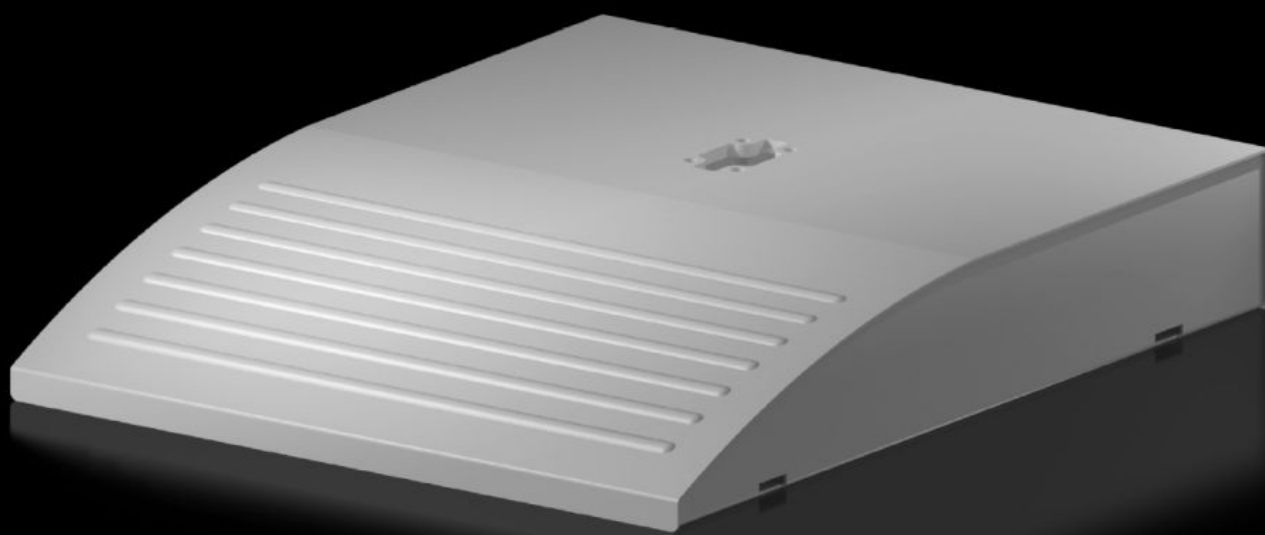
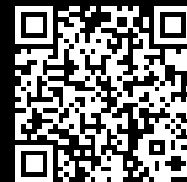


# Rittal – The System.

Faster – better – everywhere.



## CP 6106.200 Pedestal base plate

State: 13/02/2026 (Source: [rittal.com/gr-en](https://www.rittal.com/gr-en))

ENCLOSURES

POWER DISTRIBUTION

CLIMATE CONTROL

IT INFRASTRUCTURE

SOFTWARE & SERVICES

FRIEDHELM LOH GROUP



# CP 6106.200 - Pedestal base plate modular, CP 60 large

## Features

Model No.	CP 6106.200
Design	Stationary
Material	Steel
Colour	RAL 7035
Supply includes	Pedestal base plate/cross member
Note	Support arm system CP 120 may also be used by simply drilling a hole. Weight capacity 50 kg
Load capacity (static)	35 kg
Dimensions	Width: 490 mm Height: 100 mm Depth: 600 mm
Packs of	1 pc(s).
Net weight	11.719
Gross weight	12.76
Customs tariff number	73269098
EAN	4028177698437
ETIM 9	EC002535
ECLASS 8.0	27182604