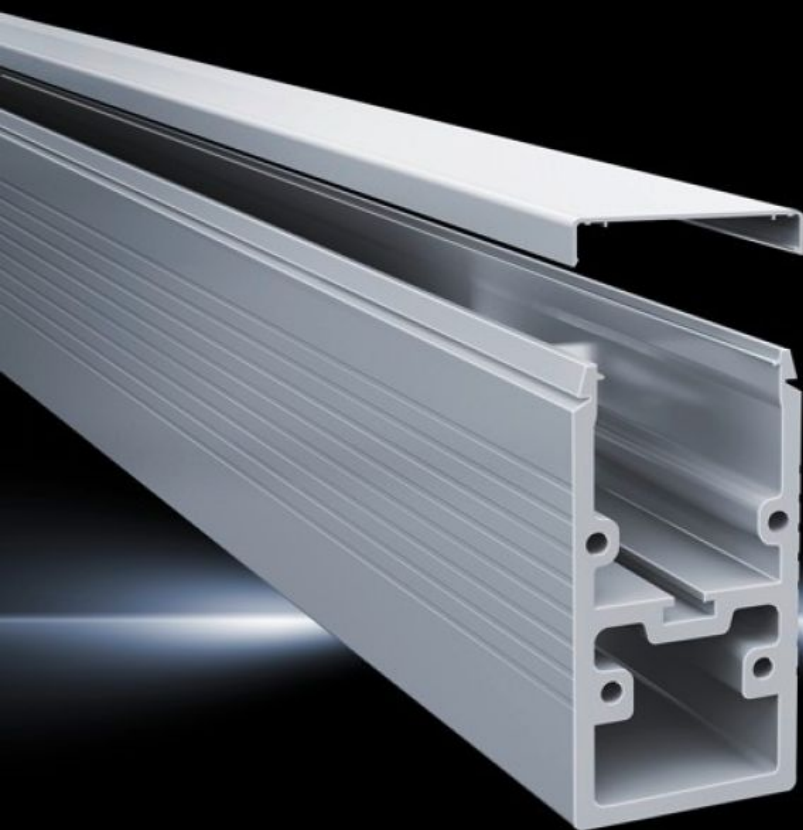
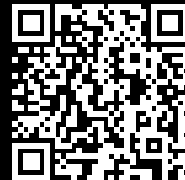


Rittal – The System.

Faster – better – everywhere.



CP 6200.000

Support sections CP-XL

State: 20/07/2025 (Source: [rittal.com/gr-en](https://www.rittal.com/gr-en))

ENCLOSURES

POWER DISTRIBUTION

CLIMATE CONTROL

IT INFRASTRUCTURE

SOFTWARE & SERVICES

FRIEDHELM LOH GROUP



CP 6200.000 - Support sections CP-XL

Support sections for CP-XL support arm system

Features

Model No.	CP 6200.000
Design	Open
Product description	Attachment to the connection components with 4 self-tapping screws in a screw channel, may be cut to any required length. Closed cable duct for higher loads and torsion. Open cable duct for easy servicing access and for pre-assembled cables with connectors, lockable via clip-in cover.
Benefits	Open support section for retrospective cable insertion Separation of control cables from power supply with two separate ducts
Material	Extruded aluminium section
Colour	RAL 7035
Supply includes	Clip-in lid
Length	2,000 mm
Dimensions	Width: 80 mm Height: 155 mm Length: 2,000 mm
Packs of	1 pc(s).
Net weight	19.125
Gross weight	20.132
Customs tariff number	76042990
EAN	4028177119758
ECLASS 8.0	27400556