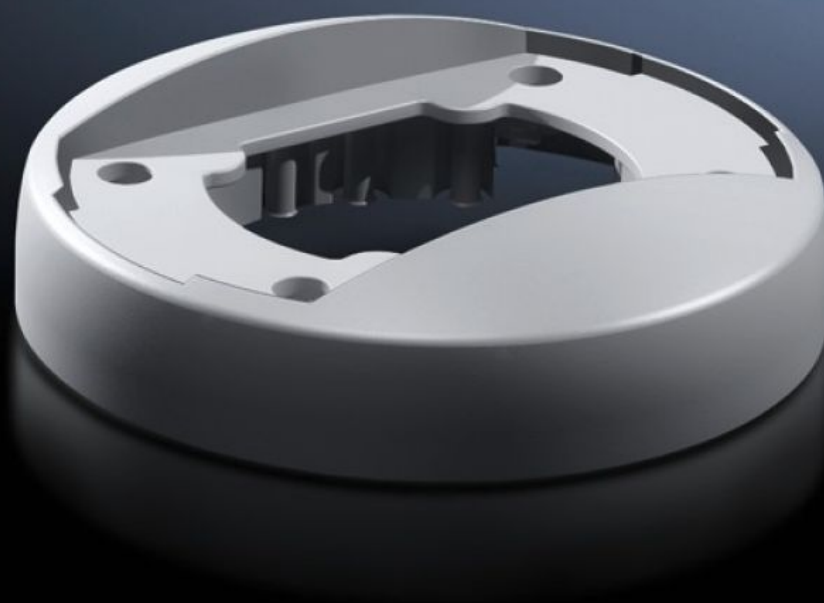


# Rittal – The System.

Faster – better – everywhere.



## CP 6212.320 Attachment CP 120

State: 27/06/2025 (Source: [rittal.com/gr-en](https://www.rittal.com/gr-en))

ENCLOSURES

POWER DISTRIBUTION

CLIMATE CONTROL

IT INFRASTRUCTURE

SOFTWARE & SERVICES

FRIEDHELM LOH GROUP



# CP 6212.320 - Attachment CP 120 for support arm connection Ø 130 mm

For rigid fastening of the enclosure to the support arm system 120

## Features

|                       |  |
|-----------------------|--|
| Model No.             | CP 6212.320  |
| Product description   | For rigid fastening of the enclosure to the support arm system 120 |
| Material              | Die-cast zinc  |
| Colour                | RAL 7035   |
| Supply includes       | Seals<br>Self-tapping screws for support section attachment        |
| Rifid y/n             | Yes  |
| Packs of              | 1 pc(s).   |
| Net weight            | 0.836  |
| Gross weight          | 0.903  |
| Customs tariff number | 73182900   |
| EAN                   | 4028177684195  |
| ETIM 9                | EC002625   |
| ECLASS 8.0            | 27189234   |

## Approvals

|              |                            |
|--------------|----------------------------|
| Explanations | Manufacturer's declaration |
|--------------|----------------------------|