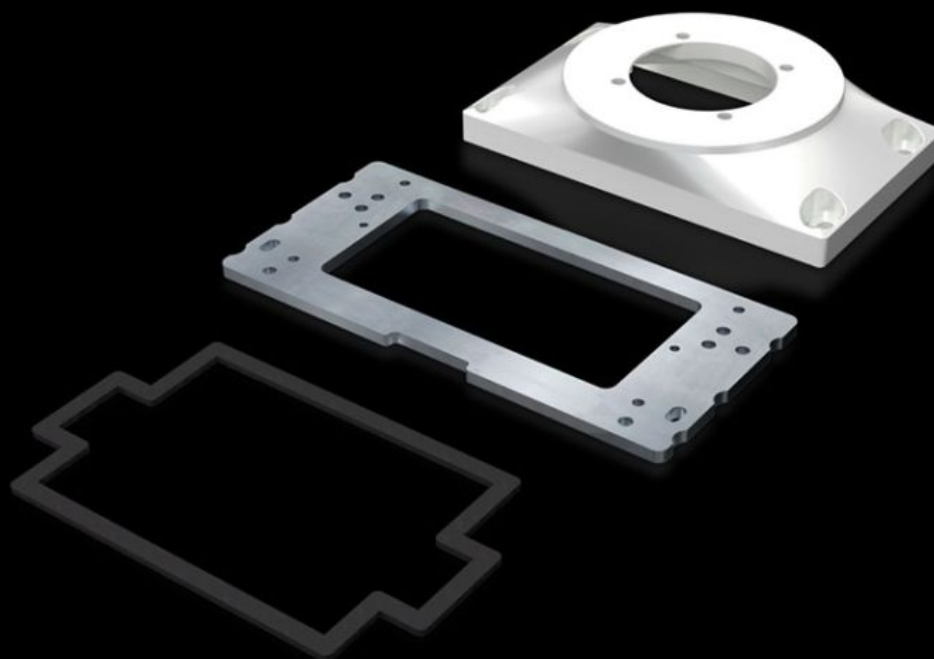
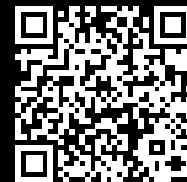


Rittal – The System.

Faster – better – everywhere.



CP 6212.540 Connection plate

State: 24/08/2025 (Source: [rittal.com/gr-en](https://www.rittal.com/gr-en))

ENCLOSURES

POWER DISTRIBUTION

CLIMATE CONTROL

IT INFRASTRUCTURE

SOFTWARE & SERVICES

FRIEDHELM LOH GROUP



CP 6212.540 - Connection plate with reinforcement plate

For easy location of the command panel onto the support arm or pedestal.

Features

Model No.	CP 6212.540
Design	<p>For mounting</p> <p>Comfort Panel from a front panel width of 247 mm and installation depth of 152 mm</p> <p>Optipanel from a front panel width of 220 mm and installation depth of 150 mm</p> <p>Sheet steel from 135 mm installation depth</p> <p>For mounting on support arm system components</p> <p>Attachment CP 60/120 for support arm connection Ø 130 mm, 6206.320, 6212.320</p> <p>Coupling CP 60/120/180 for support arm connection Ø 130 mm, 6206.300, 6212.300, 6218.300</p> <p>Angle coupling 90°, system 60/120 for support arm connection Ø 130 mm, CP 6206.380, 6212.380</p> <p>Tilting adaptor 10°, system 60/120 for support arm connection Ø 130 mm, CP 6206.400</p> <p>Tilting adaptor ±45°, system 60/120 for support arm connection Ø 130 mm, CP 6206.420</p>
Benefits	<p>For easy location of the command panel onto the support arm or pedestal</p> <p>More space for cable entry</p>
Material	<p>Connection plate: Cast aluminium</p> <p>Reinforcement plate: Sheet steel, 6 mm</p>
Colour	RAL 7035
Supply includes	<p>Reinforcement plate</p> <p>Seals</p> <p>Assembly parts</p>
Packs of	1 pc(s).
Net weight	1.3
Gross weight	1.604

Features

Customs tariff number	76169990
EAN	4028177684232
ETIM 9	EC000882
ECLASS 8.0	27400556

Approvals

Explanations	Manufacturer's declaration
--------------	----------------------------