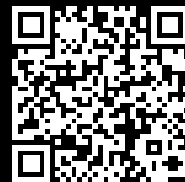


# Rittal – The System.

Faster – better – everywhere.



## CP 6214.500 Pillar, small

State: 21/12/2025 (Source: [rittal.com/gr-en](http://rittal.com/gr-en))

ENCLOSURES

POWER DISTRIBUTION

CLIMATE CONTROL

IT INFRASTRUCTURE

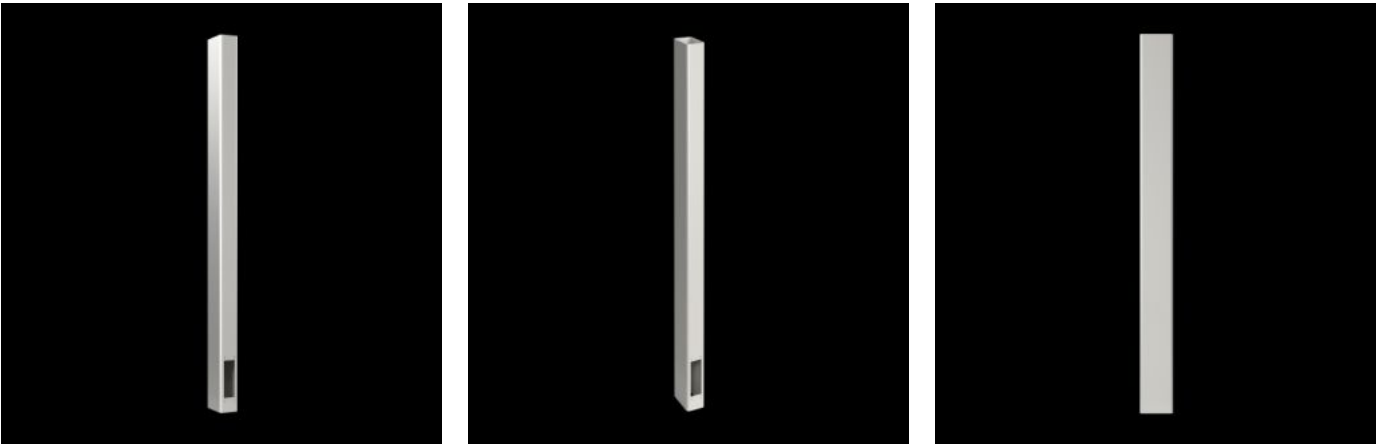
SOFTWARE & SERVICES

FRIEDHELM LOH GROUP



# CP 6214.500 - Pillar, small

Pillars, small, suitable for heavy installed equipment.



## Features

Model No.	CP 6214.500
Product description	The complete welded alternatives to the pedestal. For heavy installed equipment.
Material	Steel
Surface finish	Spray-finished
Colour	RAL 7035
Width base plate	500 mm
Height base plate	12 mm
Depth base plate	500 mm
Material thickness pedestal	3.2 mm
Pedestal tube cross-section depth	80 mm
Pedestal tube cross-section width	160 mm
Load capacity (static)	80 kg
Dimensions	Height: 1,150 mm
Packs of	1 pc(s).
Net weight	34.2

# Features

Gross weight	36
Customs tariff number	76109090
EAN	4028177387348
ETIM 9	EC002534
ECLASS 8.0	27182604