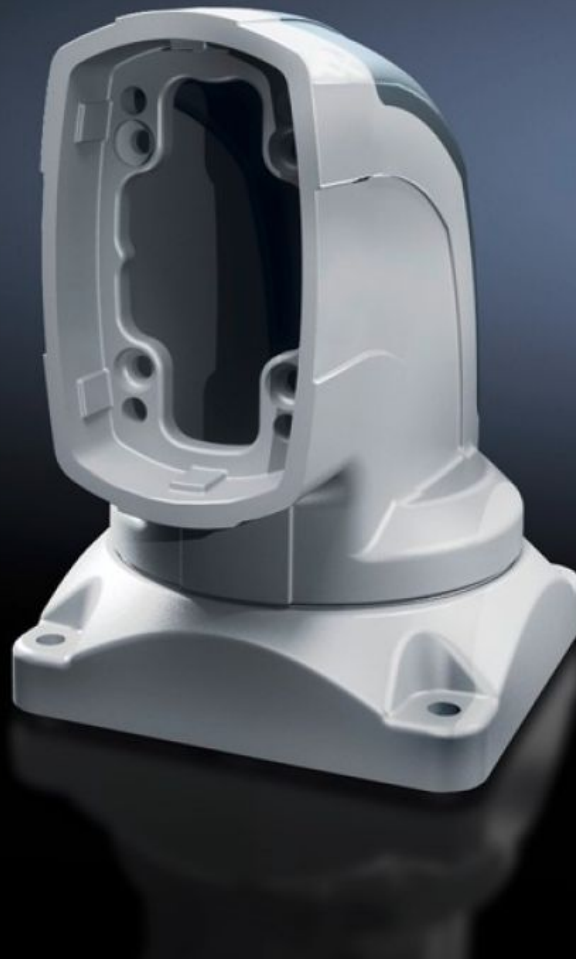


**Rittal – The System.**

Faster – better – everywhere.



**CP 6218.700**

**Top-mounted joint CP 180**

State: 08/07/2026 (Source: [rittal.com/gr-en](http://rittal.com/gr-en))

ENCLOSURES

POWER DISTRIBUTION

CLIMATE CONTROL

IT INFRASTRUCTURE

SOFTWARE & SERVICES

FRIEDHELM LOH GROUP



# CP 6218.700 - Top-mounted joint CP 180 Horizontal outlet

For swivel mounting of the support arm system on horizontal surfaces – also suitable for suspending from the ceiling. Removable cover for simple cable entry.

## Features

Model No.	CP 6218.700
Product description	For swivel mounting of the support arm system on horizontal surfaces – also suitable for suspending from the ceiling. Removable cover for simple cable entry.
Material	Top-mounted joint: Cast steel Cover: Plastic
Colour	Top-mounted joint: RAL 7035 Cover: RAL 7024
Supply includes	Seals Screws for restricting rotation range Adjusting screws Self-tapping screws for support section attachment
Rotating/tilting	Yes
Rotation angle/swivel area	approx. 330°. The range of rotation can be limited by inserting the screws/limit plate provided.
Packs of	1 pc(s).
Net weight	18 kg
Gross weight	18.65 kg
PCF per pack (cradle-to-gate)	68.6 kg CO2 eq (Cat B)
Note on PCF category	Category B: PCF value (cradle-to-gate) based on the product weight, approximately calculated and self-declared
Customs tariff number	73269098
ETIM 9	EC000882
ECLASS 8.0	27400556

# Features

---

Product description

CP Top-mounted joint CP 180, outlet horizontal

# Approvals

---

Explanations

Manufacturer's declaration