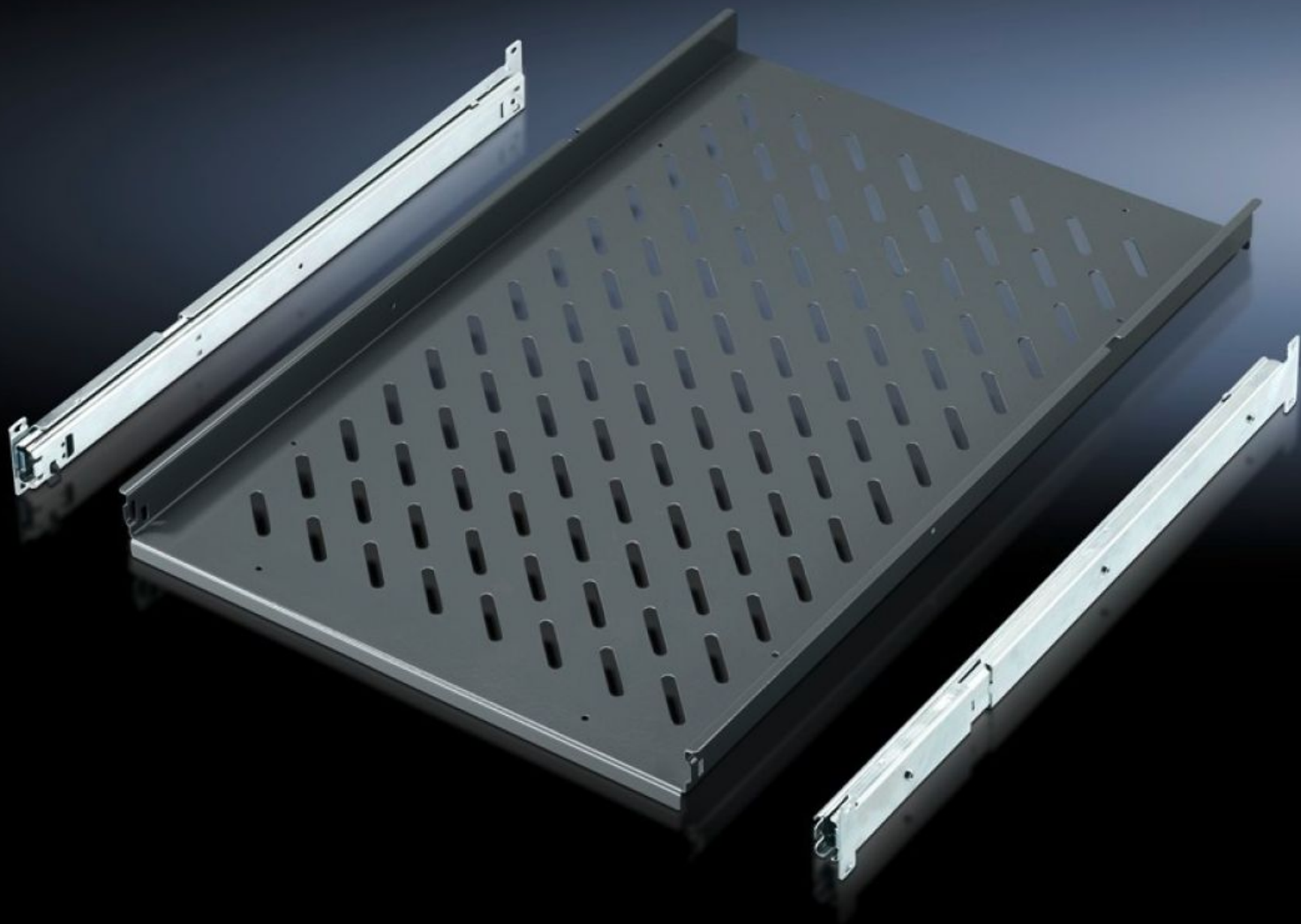
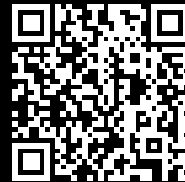


# Rittal – The System.

Faster – better – everywhere.



## IW 6902.960

### Component shelf, pull-out

State: 10/02/2026 (Source: [rittal.com/gr-en](http://rittal.com/gr-en))

ENCLOSURES

POWER DISTRIBUTION

CLIMATE CONTROL

IT INFRASTRUCTURE

SOFTWARE & SERVICES

FRIEDHELM LOH GROUP



# IW 6902.960 - Component shelf, pull-out for TS, PC, IW

For direct mounting on the vertical TS enclosure section, enclosure width.

## Features

Model No.	IW 6902.960
Product description	For direct mounting on the vertical TS enclosure section.
Material	Sheet steel
Colour	RAL 7015
Supply includes	2 telescopic slides
Load capacity	30 kg surface load, static
Note	For enclosures without mounting plate
Note on Model No.	May also be installed in 800 mm deep enclosures based on TS (pull-out rear attachment).
Support area	Width: 465 mm Depth: 545 mm
To fit	Enclosure type: TS PC IW Width: = 600 mm Depth: = 600 mm = 800 mm
Packs of	1 pc(s).
Net weight	6.854
Gross weight	7.215
PCF per pack (cradle-to-gate)	29.7 kg CO2 eq (Cat B)
Note on PCF category	Category B: PCF value (cradle-to-gate) based on the product weight, approximately calculated and self-declared
Customs tariff number	94039910
EAN	4028177289864

# Features

ETIM 9	EC002620
ECLASS 8.0	27189261