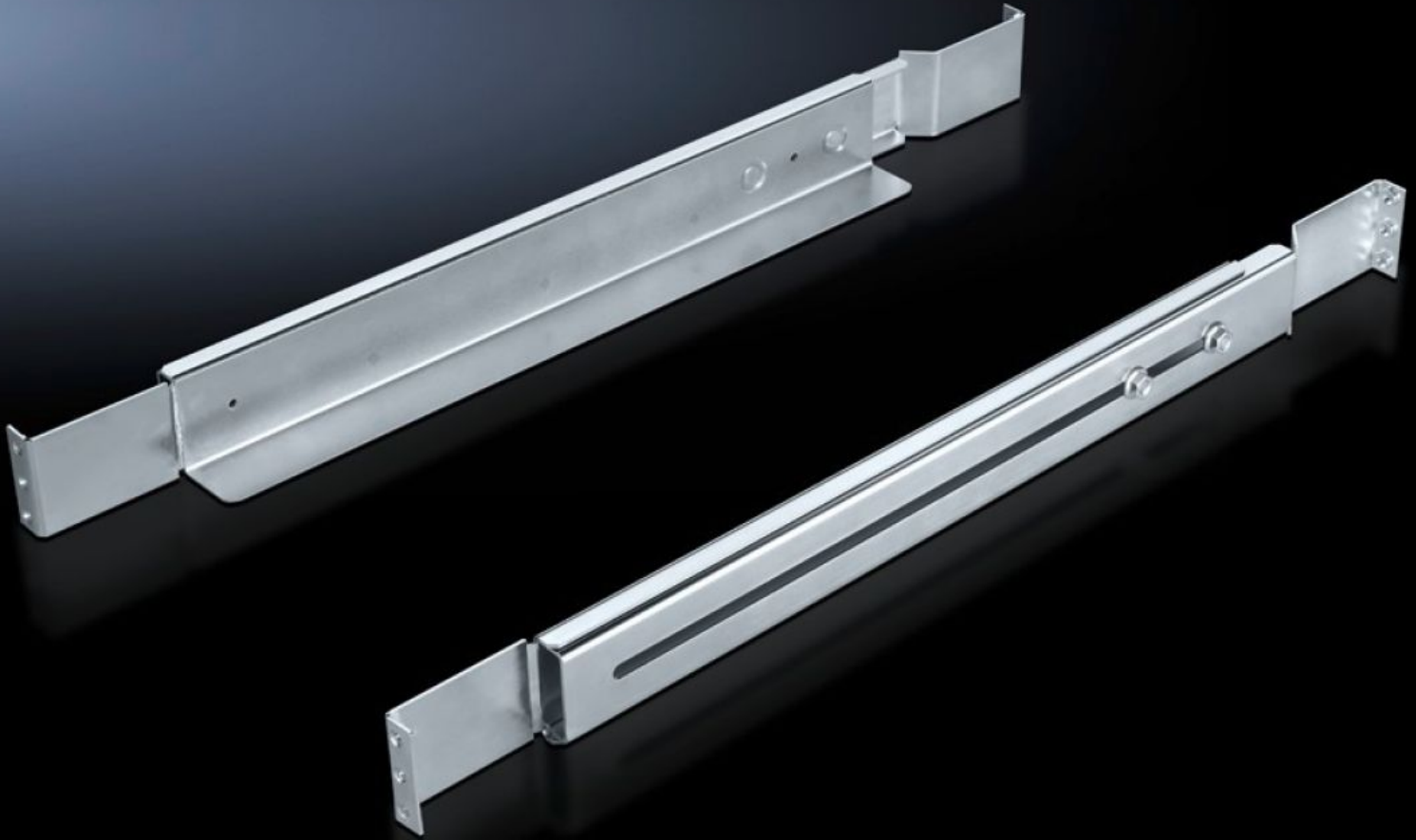


**Rittal – The System.**

Faster – better – everywhere.



**DK 7063.752**

**Slide rail, 1 U, depth-variable**

State: 08/07/2026 (Source: [rittal.com/gr-en](http://rittal.com/gr-en))

ENCLOSURES

POWER DISTRIBUTION

CLIMATE CONTROL

IT INFRASTRUCTURE

SOFTWARE & SERVICES

FRIEDHELM LOH GROUP



# DK 7063.752 - Slide rail, 1 U, depth-variable for VX IT, TE

For server and network enclosures with two 482.6 mm (19") mounting levels, for mounting both on cranked and L-shaped mounting angles, 482.6 mm (19") mounting frames and on TE, pull-out.



## Features

Model No.	DK 7063.752
Product description	For direct attachment to the 482.6 mm (19") system punchings on the mounting angles. The slide rails are pulled out to the required length and secured between the front and rear mounting level on the 482.6 mm (19") pitch pattern.
Benefits	No loss of U Thanks to the thin support surface of only around 0.8 mm thickness, exceeding the U pitch pattern is generally avoided, provided the components do not exceed a maximum height of 43.5 mm. In this way, several units may be easily arranged on top of one another without offset.
Applications	For mounting on the front mounting level
Material	Sheet steel
Surface finish	Zinc-plated
Supply includes	Assembly parts
Installation options	For attachment between the front and rear 482.6 mm (19") mounting level
Load capacity	20 kg static load
Note	Effective contact surface 30 mm per side
Contact surface	Width: 30 mm

# Features

Distance between levels	550 - 750 mm
Packs of	2 pc(s).
Net weight	2.558 kg
Gross weight	2.7 kg
PCF per pack (cradle-to-gate)	11.3 kg CO2 eq (Cat B)
Note on PCF category	Category B: PCF value (cradle-to-gate) based on the product weight, approximately calculated and self-declared
Customs tariff number	73269098
ETIM 9	EC002625
ECLASS 8.0	27189234
Product description	DK Slide rail, Support surface Width: 30 mm, 1 U, depth-variable, 20 kg, static, distance between levels: 550-750 mm, For TS IT, TE

# Tender text

Slide rails, depth-variable, 1 U

For server and network enclosures

with two 482.6 mm (19 inch) mounting levels,  
without additional loss of U.

For attachment on both cranked and L-shaped  
mounting angles and 482.6 mm (19 inch) mounting  
frames. The slide rails are pulled out to the  
required length and secured between the front  
and rear mounting level on the 482.6 mm (19 inch)  
pitch pattern.

Distance between 482.6 mm (19 inch) levels:

550 - 750 mm

Load capacity:

20 kg static load

Material:

Sheet steel, zinc-plated, passivated

Supply includes:

Packs of 2

Assembly parts