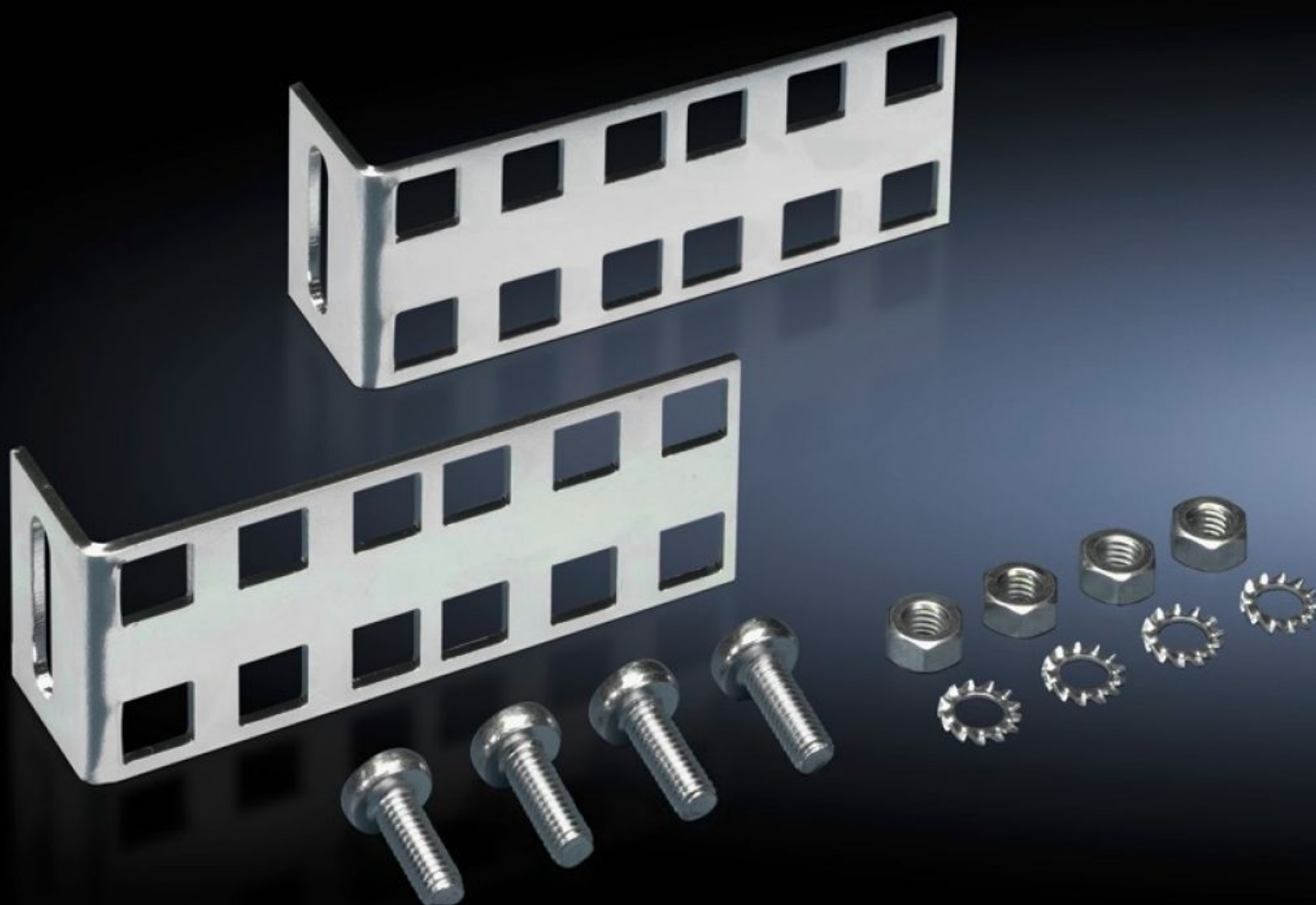


# Rittal – The System.

Faster – better – everywhere.



## DK 7246.420

### Mounting kit, 2 U

State: 04/09/2025 (Source: [rittal.com/gr-en](http://rittal.com/gr-en))

ENCLOSURES

POWER DISTRIBUTION

CLIMATE CONTROL

IT INFRASTRUCTURE

SOFTWARE & SERVICES

FRIEDHELM LOH GROUP



# DK 7246.420 - Mounting kit, 2 U for 482.6 mm (19") equipment

Facilitates fast, simple integration of additional 2 U mounting space within an enclosure by attaching to the enclosure frame or to the existing mounting angles at the sides.



## Features

|                               |   |
|-------------------------------|---|
| Model No.                     | DK 7246.420   |
| Product description           | Facilitates fast, simple integration of additional 2 U mounting space within an enclosure by attaching to the enclosure frame or to the existing mounting angles at the sides. The flexible slot fastening of the brackets means that the distance between the two installation brackets may be freely selected, so that other 482.6 mm (19") attachment dimensions may be implemented. The second row of holes is used for the optional configuration of additional mounting surfaces. |
| Material                      | Sheet steel   |
| Surface finish                | Zinc-plated   |
| Supply includes               | Assembly parts  |
| Units                         | 2 U   |
| Packs of                      | 2 pc(s).  |
| Net weight                    | 0.172   |
| Gross weight                  | 0.18  |
| PCF per pack (cradle-to-gate) | 1.4 kg CO2 eq (Cat B)   |

# Features

|                       |  |
|-----------------------|--|
| Note on PCF category  | Category B: PCF value (cradle-to-gate) based on the product weight, approximately calculated and self-declared |
| Customs tariff number | 83024900   |
| EAN                   | 4028177435735  |
| ETIM 9                | EC002625   |
| ECLASS 8.0            | 27189234   |

# Tender text

2 U mounting kit for 482.6 mm (19") mounting components

Material: Sheet steel, zinc-plated, passivated