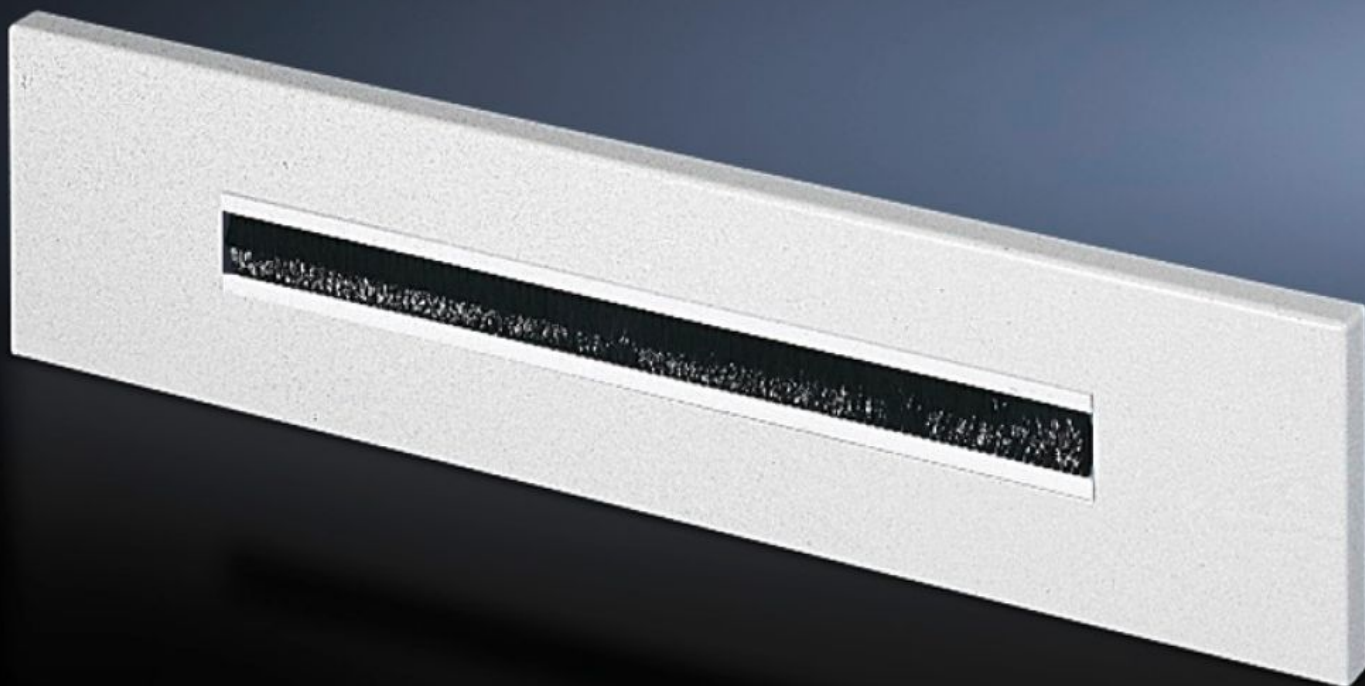
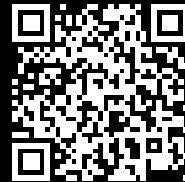


# Rittal – The System.

Faster – better – everywhere.



## EL 7705.035

## Gland plate with brush insert

State: 07/09/2025 (Source: [rittal.com/gr-en](https://www.rittal.com/gr-en))

ENCLOSURES

POWER DISTRIBUTION

CLIMATE CONTROL

IT INFRASTRUCTURE

SOFTWARE & SERVICES

FRIEDHELM LOH GROUP



# EL 7705.035 - Gland plate with brush insert for EL

Folded gland plate with foamed-in seal and plastic brush inserts for simple cable entry.

## Features

Model No.	EL 7705.035
Product description	Folded gland plate with foamed-in seal and plastic brush inserts for simple cable entry.
Material	Sheet steel, 1.5 mm
Colour	RAL 7035
Dimensions	Width: 599 mm Depth: 133.5 mm
Packs of	1 pc(s).
Net weight	1.06
Gross weight	1.36
PCF per pack (cradle-to-gate)	6.5 kg CO2 eq (Cat B)
Note on PCF category	Category B: PCF value (cradle-to-gate) based on the product weight, approximately calculated and self-declared
Customs tariff number	73269098
EAN	4028177166073
ETIM 9	EC000211
ECLASS 8.0	27142421