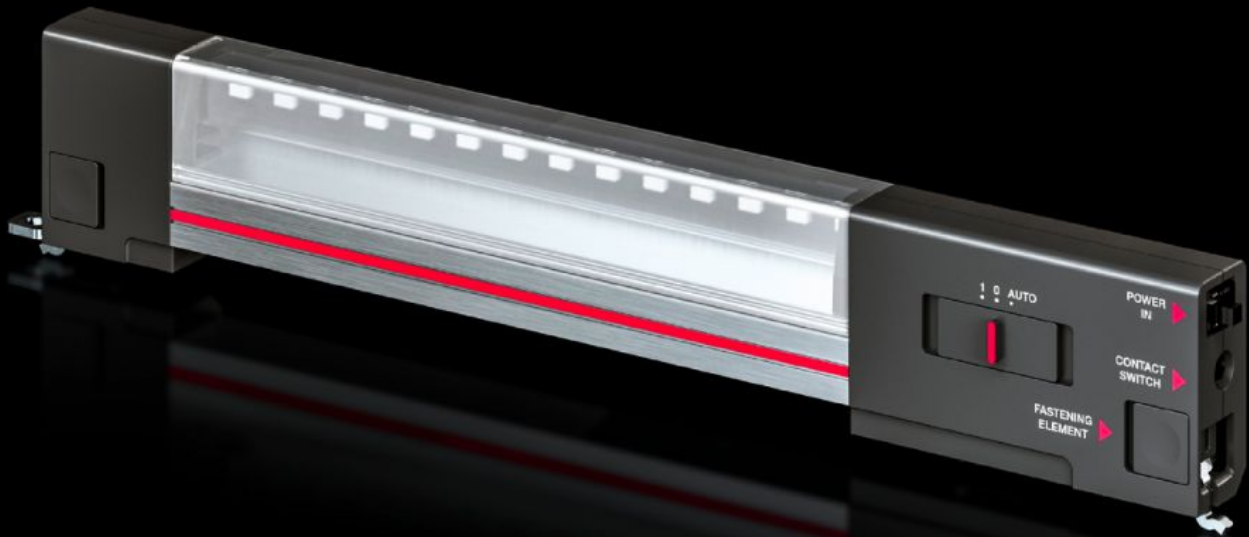
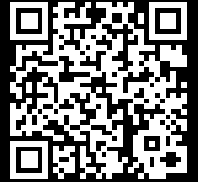


Rittal – The System.

Faster – better – everywhere.



DK 7859.000 IT LED system light

State: 11/05/2026 (Source: rittal.com/gr-en)

ENCLOSURES

POWER DISTRIBUTION

CLIMATE CONTROL

IT INFRASTRUCTURE

SOFTWARE & SERVICES

FRIEDHELM LOH GROUP



DK 7859.000 - IT LED system light for IT rack systems and IT racks

For optimum illumination of IT enclosure systems and IT enclosures



Features

| | |
|---------------------|--|
| Model No. | DK 7859.000 |
| Design | All-insulated, with internal fuse (T2A) |
| Product description | For optimum illumination of a network enclosure. |
| Benefits | Manual or automatic switching via door contact switch is supported Optimum illumination of the entire enclosure Plug & play quick assembly Optionally with clip, screw and magnetic attachment Ready to use immediately, thanks to plug-in connection cable Attachment with no loss of U in the rack. |
| Material | Light body: Extruded aluminium Light cover: Polycarbonate Light ends: PC-ABS |
| Colour | Enclosure: RAL 7016 |
| Supply includes | IT LED system light Mounting kit magnet Assembly screws |
| Connection options | Power supply via connectors Door-operated switch |

Features

| | |
|-------------------------------------|---|
| Protection class | II (all-insulated) |
| Switch (type) | Integral on/off/door-operated switch |
| Light – installation type | Screw-fastening Clip attachment Magnetic attachment |
| Installation options | Screw-fasten or clip directly onto the VX IT/VX SE section TE 8000, IT enclosure: with magnet mounting kit AX, TP: with magnet mounting kit AX: with rail for interior installation For operation with Europlug to CEE 7/16 and IEC 320 connector |
| Luminous flux | 600 lm |
| Light colour | 4000 K (neutral white) |
| Note | The plug-in connection cables should only be used with the IT LED system light. Cascading of multiple IT LED system lights is not possible. |
| Dimensions | Width: 337 mm Height: 55 mm Depth: 23 mm |
| Operating temperature range | -20 °C...55 °C |
| IP protection category to IEC 60529 | IP 20 |
| Packs of | 1 pc(s). |
| Net weight | 0.38 kg |
| Gross weight | 0.401 kg |
| Customs tariff number | 94054990 |
| ETIM 9 | EC000321 |
| ECLASS 8.0 | 27189241 |
| Product description | DK IT-LED system light, 600lm, For frame mounting |

Approvals

Approvals

UL

Explanations

Declaration of conformity