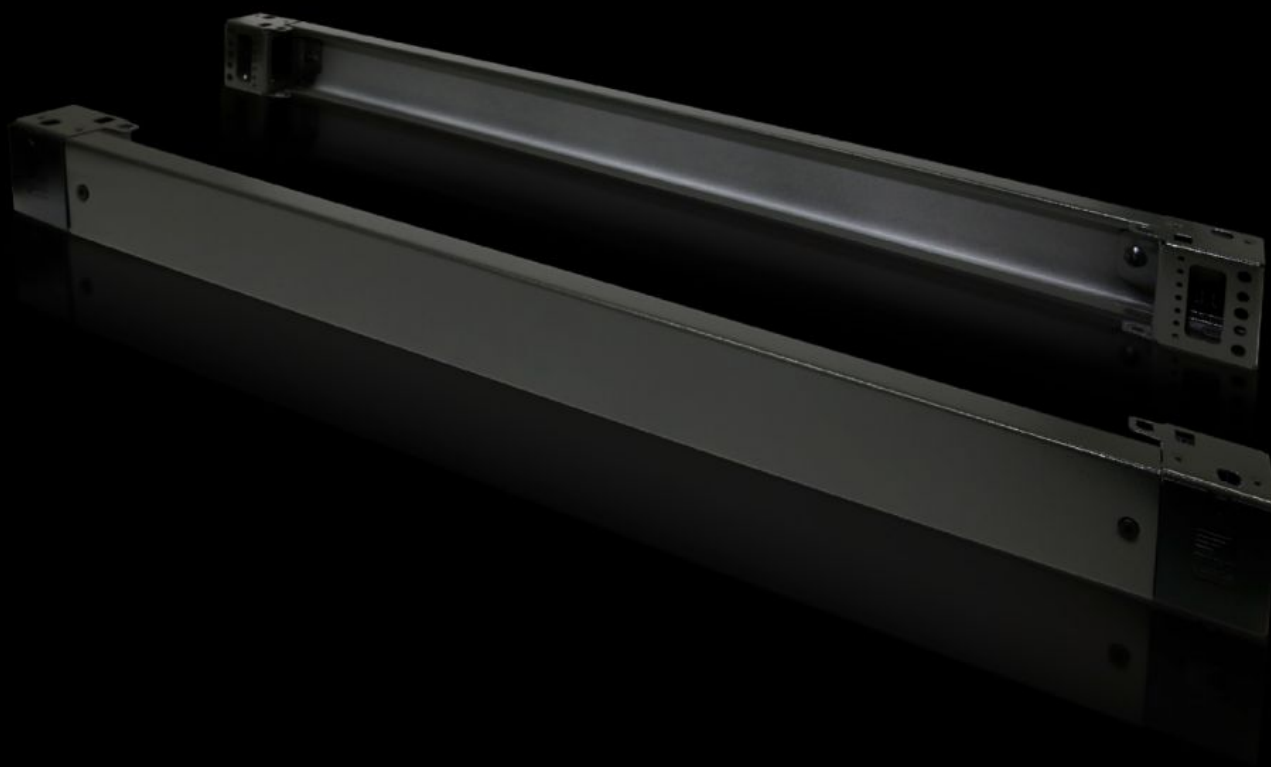
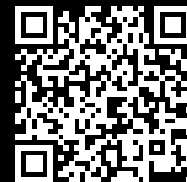


Rittal – The System.

Faster – better – everywhere.



TS 8601.200

Base/plinth components, front and rear, 100 mm

State: 26/08/2025 (Source: rittal.com/gr-en)

ENCLOSURES

POWER DISTRIBUTION

CLIMATE CONTROL

IT INFRASTRUCTURE

SOFTWARE & SERVICES

FRIEDHELM LOH GROUP



TS 8601.200 - Base/plinth components, front and rear, 100 mm Sheet steel, for TS, TS IT, SE, CM, TP, PC, IW, TE

Base/plinth component consisting of one trim panel and two pre-configured corner pieces.

Features

| | |
|-----------------------|---|
| Model No. | TS 8601.200 |
| Design | solid |
| Product description | Base/plinth component consisting of one trim panel and two pre-configured corner pieces. |
| Material | Base/plinth components: Sheet steel Cover caps: Plastic |
| Surface finish | Spray-finished |
| Colour | RAL 7022 Cover caps: RAL 9005 |
| Supply includes | 2 base/plinth components 4 cover caps Assembly parts |
| Dimensions | Height: 100 mm |
| To fit | Enclosure type: TS: = 1,200 mm Enclosure type: SE Enclosure type: CM Enclosure type: TP Enclosure type: PC Enclosure type: IW Enclosure type: TS IT |
| Packs of | 2 pc(s). |
| Net weight | 5.76 |
| Gross weight | 6.08 |
| Customs tariff number | 94039910 |
| EAN | 4028177208544 |

Features

ECLASS 8.0

27182003