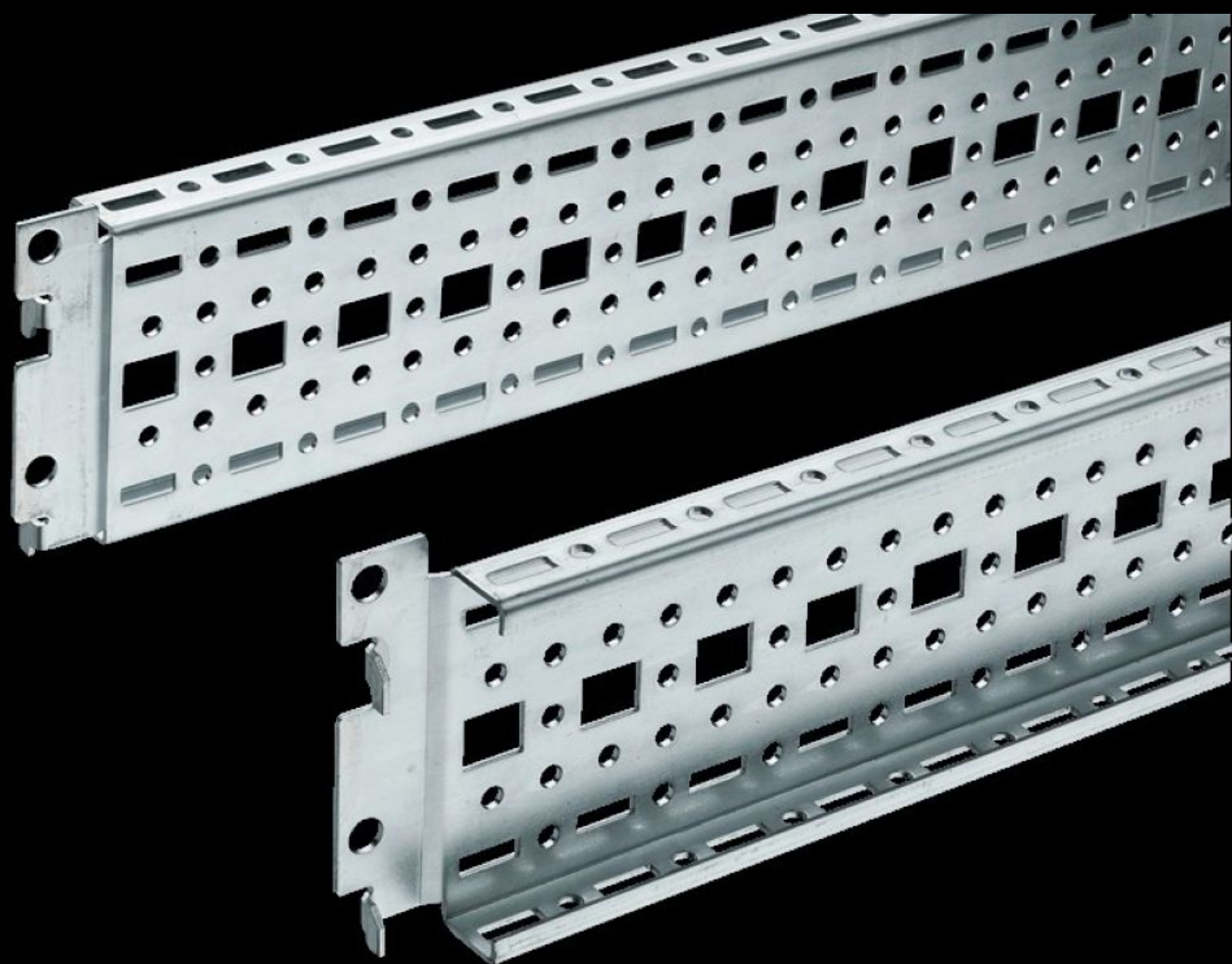
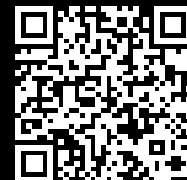


# Rittal – The System.

Faster – better – everywhere.



## TS 8612.020

## TS punched section with mounting flange, 17 x 73 mm

State: 03/02/2026 (Source: [rittal.com/gr-en](http://rittal.com/gr-en))

ENCLOSURES

POWER DISTRIBUTION

CLIMATE CONTROL

IT INFRASTRUCTURE

SOFTWARE & SERVICES

FRIEDHELM LOH GROUP



# TS 8612.020 - TS punched section with mounting flange, 17 x 73 mm

For universal skeleton structures or partial assembly. Simply locate into the punchings and secure.



## Features

Model No.	TS 8612.020
Design	for the inner mounting level
Product description	For universal skeleton structures or partial assembly. Simply locate into the punchings and secure.
Material	Sheet steel
Surface finish	Zinc-plated
Supply includes	Assembly screws
Length	1,190 mm
Installation options	On the vertical TS, VX SE enclosure section: On the inner mounting level, height-offset all-round On the horizontal VX SE enclosure section, top in the depth In TP via rail for interior installation: In the width, for inner mounting level As a mounting kit for component shelves in TS, VX SE, simply locate and secure
Assembly instruction	The rail for internal mounting is required when installing in TP

# Features

To fit	Enclosure type: VX SE TP PC IW Width/depth: 1,200 mm
Packs of	4 pc(s).
Net weight	5.2
Gross weight	5.3
Customs tariff number	73269098
EAN	4028177212060
ETIM 9	EC002625
ECLASS 8.0	27189234