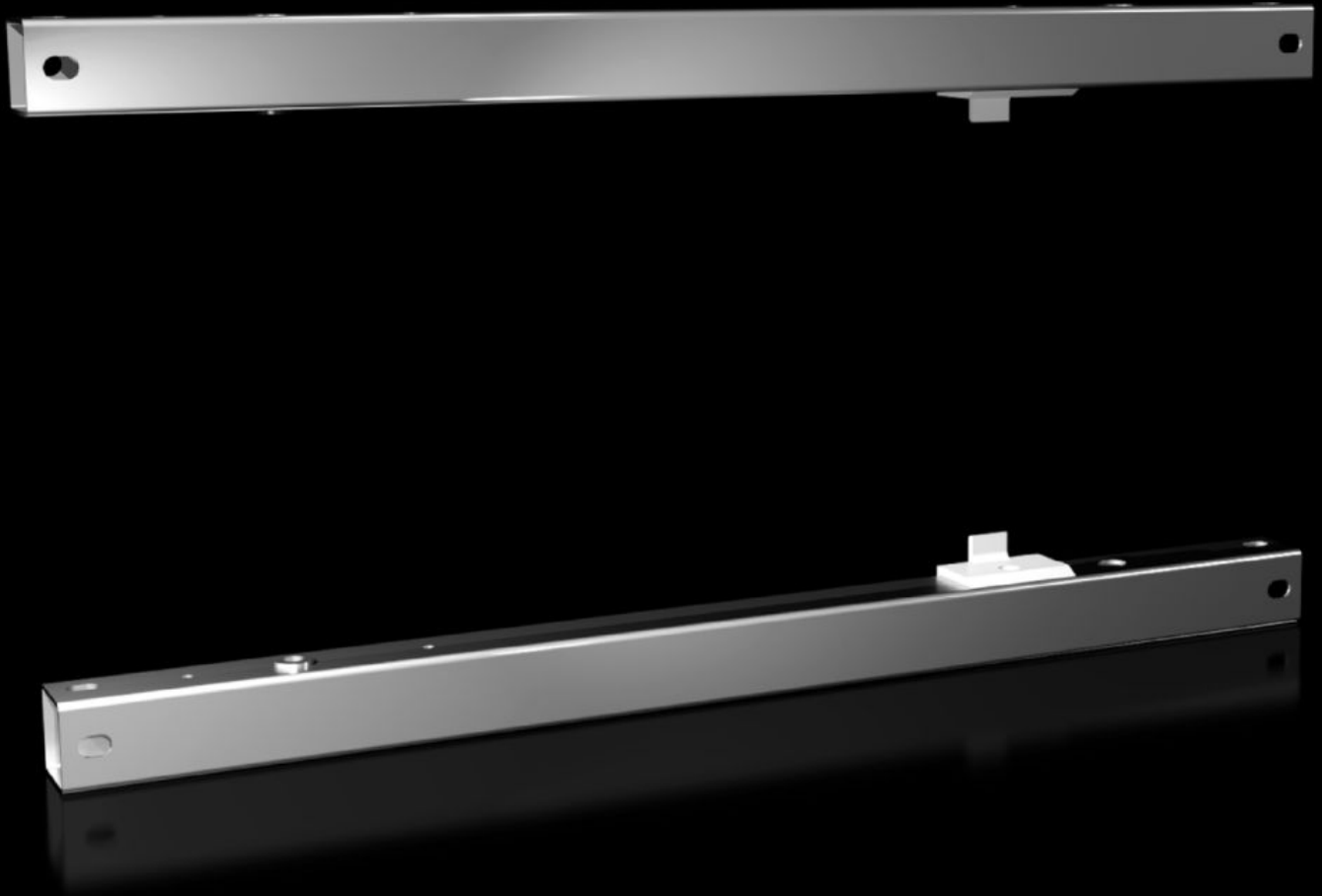


# Rittal – The System.

Faster – better – everywhere.



## VX 8619.600 Installation kit

State: 22/05/2026 (Source: [rittal.com/gr-en](http://rittal.com/gr-en))

ENCLOSURES

POWER DISTRIBUTION

CLIMATE CONTROL

IT INFRASTRUCTURE

SOFTWARE & SERVICES

FRIEDHELM LOH GROUP



# VX 8619.600 - Installation kit for VX swing frame, small, and VX partial mounting plate

For mounting the swing frame, small in AX, VX, SE or a partial mounting plate (in conjunction with a hinge for partial mounting plates).

## Features

Model No.	VX 8619.600
Product description	For mounting the small swing frame in AX, VX, SE or a partial mounting plate (in conjunction with a hinge for partial mounting plates).
Applications	For VX: Directly onto the enclosure section in the foremost position For VX: In conjunction with punched section with mounting flange 23 x 64 mm, offset in the depth
Material	Sheet steel
Surface finish	Nickel-plated
Supply includes	Assembly parts
Installation options	Directly on the enclosure section in the foremost position In conjunction with punched section with mounting flange 23 x 64 mm, offset in the depth
Note	For installation in AX sheet steel, only in conjunction with mounting kit AX In VX SE, on the enclosure section in conjunction with VX adaptor rail Hinge attachment 8617650 is required for mounting on the partial mounting plate
Load capacity (static)	1,500 N
To fit	Enclosure type: VX AX Width: = 600 mm
To fit enclosure type	VX AX

# Features

Packs of	1 pc(s).
Net weight	2.4 kg
Gross weight	2.52 kg
Customs tariff number	83024900
ETIM 9	EC002620
ECLASS 8.0	27189234
Product description	VX Installation kit, for swing frame, small, for W: 600 mm