

Rittal – The System.

Faster – better – everywhere.



VX 8619.800

Cable entry plates

State: 25/02/2026 (Source: rittal.com/gr-en)

ENCLOSURES

POWER DISTRIBUTION

CLIMATE CONTROL

IT INFRASTRUCTURE

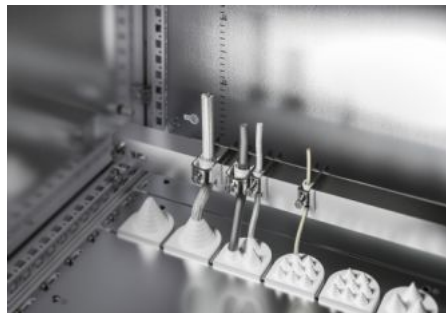
SOFTWARE & SERVICES

FRIEDHELM LOH GROUP



VX 8619.800 - Cable entry plates for VX

For cable entry grommets and connector grommets, may be exchanged for segments of the divided gland plates supplied as standard.



Features

Model No.	VX 8619.800
Product description	For cable entry grommets and connector grommets, may be exchanged for segments of the divided gland plates supplied as standard.
Material	Sheet steel
Surface finish	Zinc-plated
Supply includes	Assembly parts
Number of cut-outs	6
To fit	Enclosure type: VX: = 600 mm Enclosure type: VX SE
IP protection category to IEC 60 529	IP 55 in conjunction with cable entry grommets or connector grommets
Packs of	2 pc(s).
Net weight	0.874 kg
Gross weight	1.26 kg
Customs tariff number	73269098
ETIM 9	EC002620
ECLASS 8.0	27189261

Features

Product description	VX Cable entry plate, for W: 600 mm
---------------------	-------------------------------------