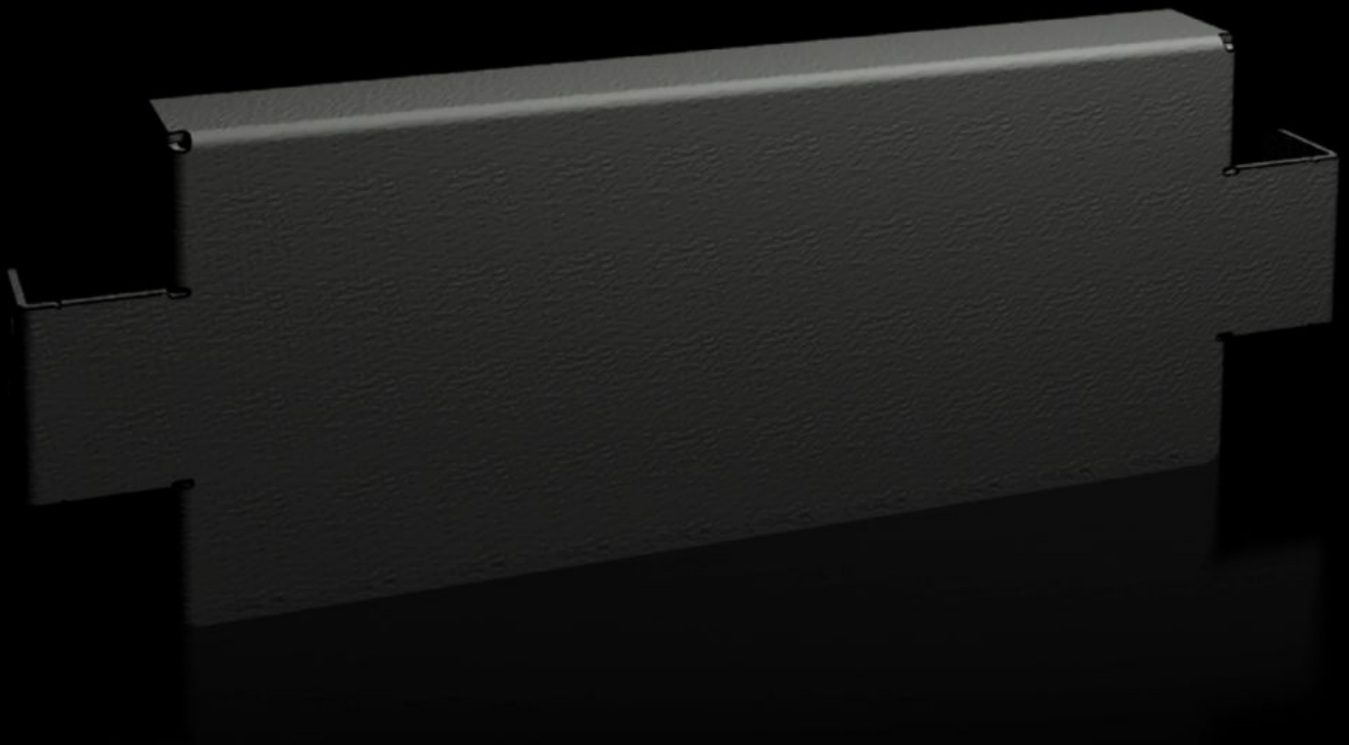


Rittal – The System.

Faster – better – everywhere.



VX 8620.031

**Base/plinth trim panels, side, 100
mm**

State: 07/05/2026 (Source: rittal.com/gr-en)

ENCLOSURES

POWER DISTRIBUTION

CLIMATE CONTROL

IT INFRASTRUCTURE

SOFTWARE & SERVICES

FRIEDHELM LOH GROUP



VX 8620.031 - Base/plinth trim panels, side, 100 mm for base/plinth system VX, sheet steel

Base/plinth trim panels are used in the depth to finish off a base/plinth unit at the sides. The trim panel may be used between two bayed enclosures to stabilise the base/plinth corner pieces. The 100 mm high trim panels may also be used in a 200 mm high base/plinth and combined.

Features

Model No.	VX 8620.031
Product description	To finish off a base/plinth unit at the sides and for additional stabilisation or for the interior configuration of bayed base/plinths. One 200 mm high or two 100 mm high trim panels may optionally be fitted on 200 mm high base/plinths.
Material	Sheet steel
Colour	RAL 9005
Supply includes	Assembly parts
Dimensions	Height: 100 mm
To fit	Depth: = 400 mm
Weight/pack	0.98 kg
Packs of	2 pc(s).
Net weight	0.9 kg
Customs tariff number	94039910
ECLASS 8.0	27182003
Product description	VX Base/plinth trim panel, side, H: 100 mm, for D: 400 mm, sheet steel

Approvals

Approvals	UL + C-UL - FTTA
-----------	------------------