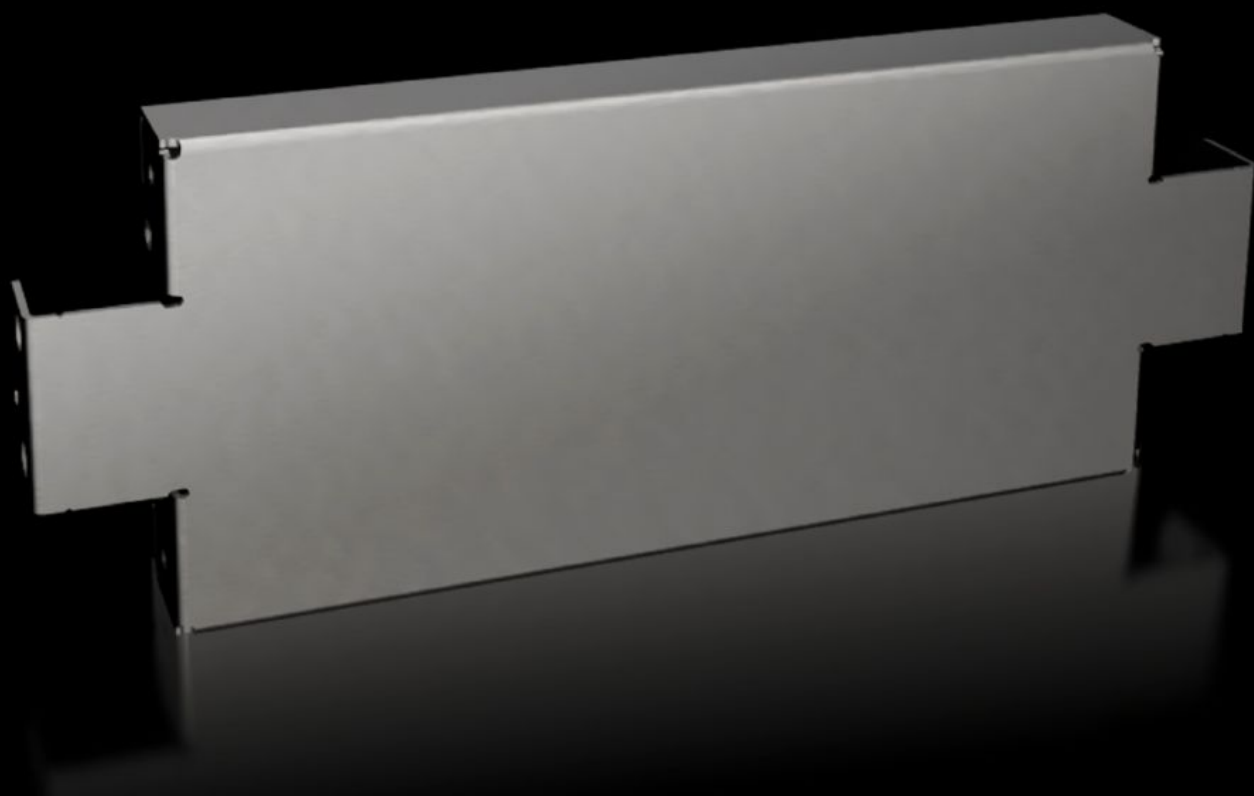


Rittal – The System.

Faster – better – everywhere.



VX 8620.070

Base/plinth trim panels, side, 100 mm, stainless steel

State: 08/12/2025 (Source: rittal.com/gr-en)

ENCLOSURES

POWER DISTRIBUTION

CLIMATE CONTROL

IT INFRASTRUCTURE

SOFTWARE & SERVICES

FRIEDHELM LOH GROUP



VX 8620.070 - Base/plinth trim panels, side, 100 mm, stainless steel for base/plinth system VX

Stainless steel base/plinth trim panels are used in the depth to finish off a base/plinth unit at the sides or for the interior installation of bayed base/plinths. The 100 mm high trim panels may also be used in a 200 mm high base/plinth and combined.

Features

Model No.	VX 8620.070
Product description	To finish off a base/plinth unit at the sides and for additional stabilisation or for the interior configuration of bayed base/plinths. One 200 mm high or two 100 mm high trim panels may optionally be fitted on 200 mm high base/plinths.
Material	Stainless steel 1.4301 (AISI 304)
Surface finish	Brushed, grain 400
Supply includes	Assembly parts
Note	Components from the 1st generation base/plinth system cannot be combined with components from the 2nd generation base/plinth system
Dimensions	Height: 100 mm
To fit	Depth: = 400 mm
Type rating to UL 50E	Type 1 Type 3R Type 4 Type 4X Type 12
Weight/pack	1.59 kg
Packs of	2 pc(s).
Net weight	1
Gross weight	1.028
Customs tariff number	94039910

Features

EAN	4028177922372
ETIM 9	EC000721
ECLASS 8.0	27182003

Approvals

Approvals	UL + C-UL - FTTA
-----------	------------------