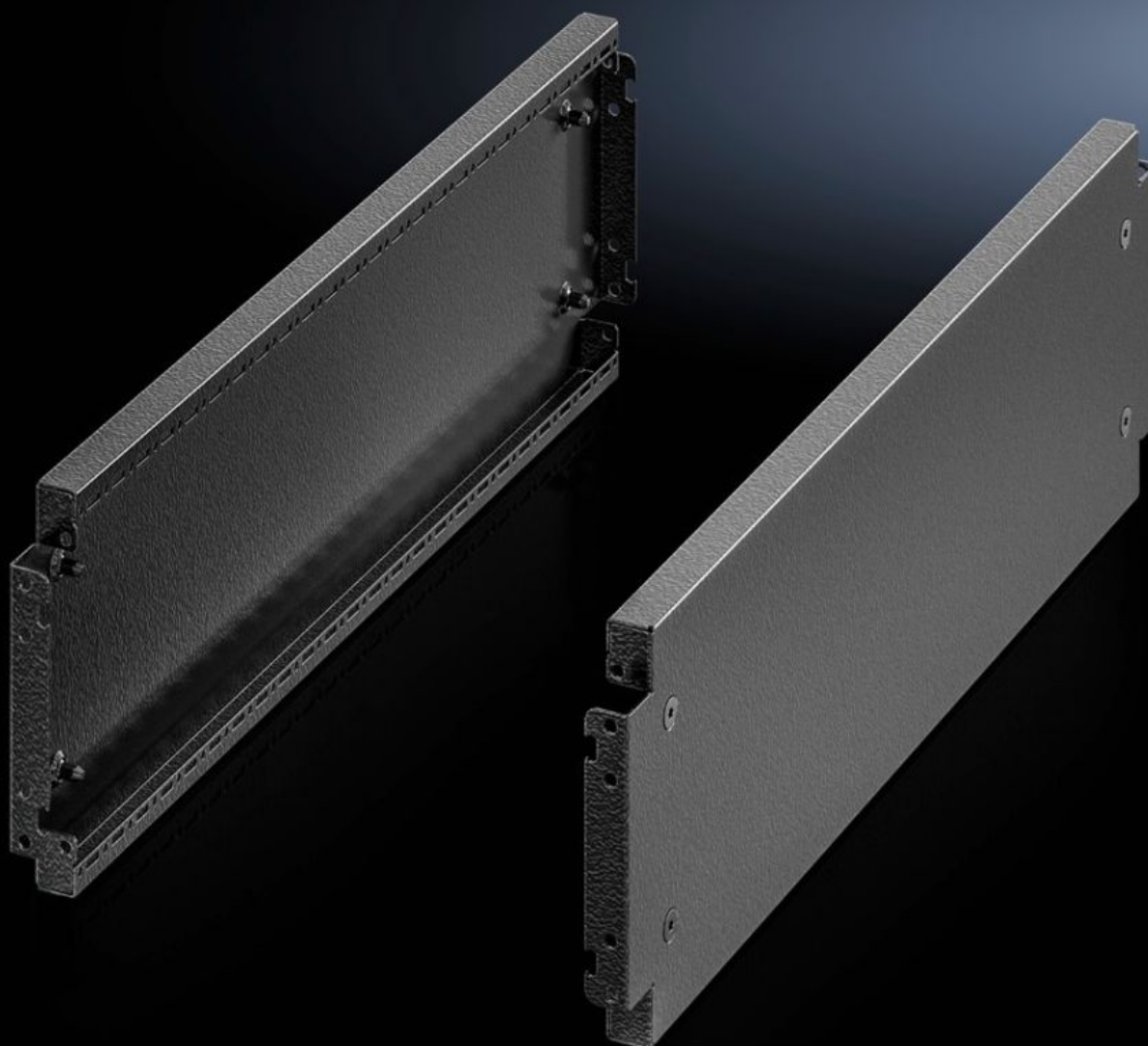
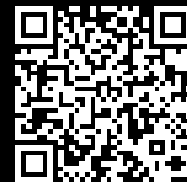


Rittal – The System.

Faster – better – everywhere.



VX 8640.041

Base/plinth trim panels, side, 200 mm

State: 26/07/2025 (Source: rittal.com/gr-en)

ENCLOSURES

POWER DISTRIBUTION

CLIMATE CONTROL

IT INFRASTRUCTURE

SOFTWARE & SERVICES

FRIEDHELM LOH GROUP



VX 8640.041 - Base/plinth trim panels, side, 200 mm for base/plinth system VX, sheet steel

To finish off a base/plinth unit at the sides and for additional stability or interior configuration of bayed base/plinths. One 200 mm high or two 100 mm high trim panels may optionally be fitted on 200 mm high base/plinths.

Features

Model No.	VX 8640.041
Product description	To finish off a base/plinth unit at the sides and for additional stabilisation or for the interior configuration of bayed base/plinths. One 200 mm high or two 100 mm high trim panels may optionally be fitted on 200 mm high base/plinths.
Material	Sheet steel
Colour	RAL 9005
Supply includes	Assembly parts
Dimensions	Height: 200 mm
To fit	Depth: = 400 mm
Type rating to UL 50E	Type 1 Type 12
Weight/pack	1.7 kg
Packs of	2 pc(s).
Net weight	1.7
Gross weight	1.72
Customs tariff number	94039910
EAN	4028177959026
E-Number Sweden	E3465384
ETIM 9	EC000721
ECLASS 8.0	27182003

Approvals

Approvals

UL + C-UL - FTTA