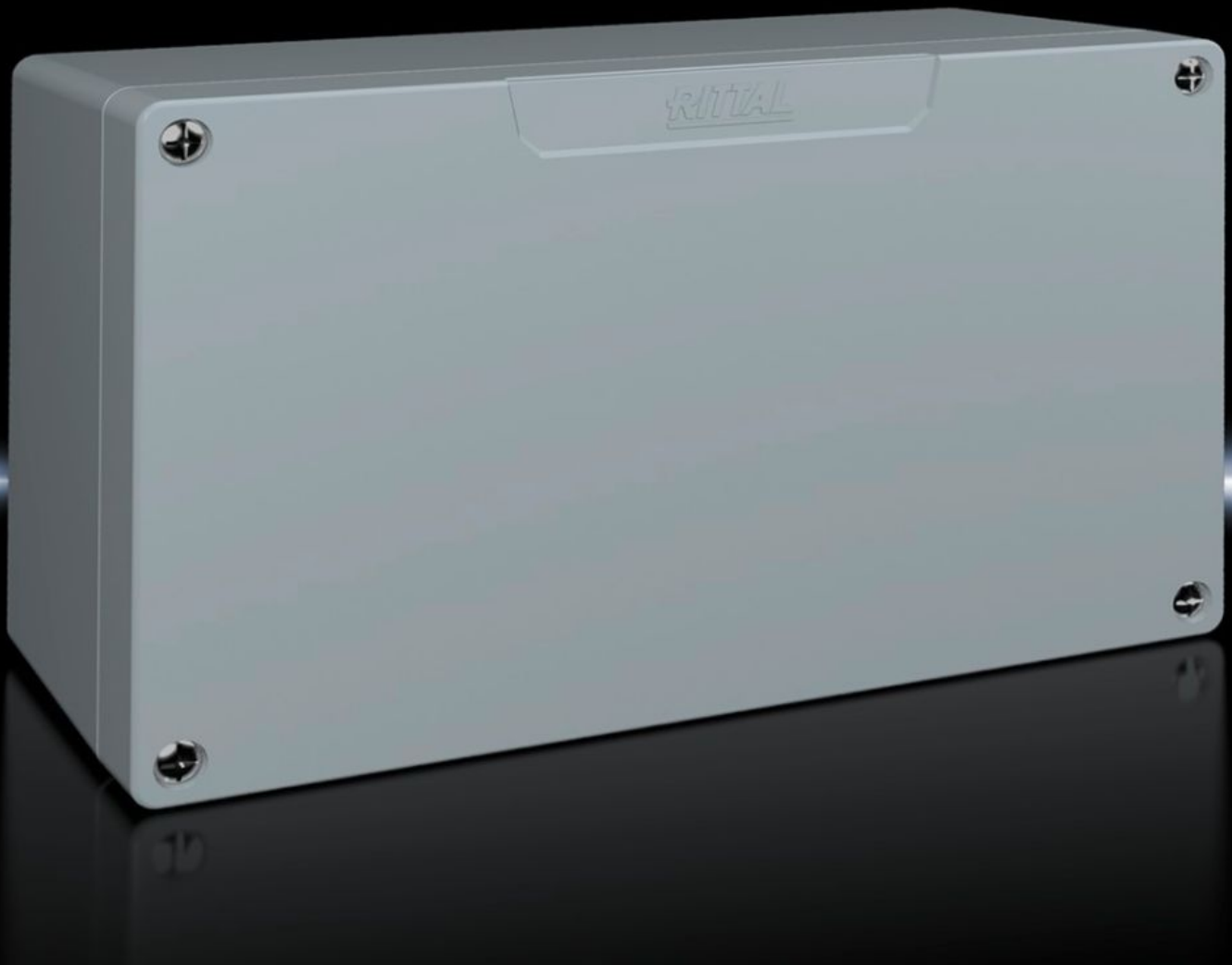


Rittal – The System.

Faster – better – everywhere.



GA 9113.210

Cast aluminium enclosures GA

State: 07/05/2026 (Source: rittal.com/gr-en)

ENCLOSURES

POWER DISTRIBUTION

CLIMATE CONTROL

IT INFRASTRUCTURE

SOFTWARE & SERVICES

FRIEDHELM LOH GROUP



GA 9113.210 - Cast aluminium enclosures GA

Spray-finished cast aluminium enclosure. Protection category IP 66.



Features

Model No.	GA 9113.210
Material	Enclosure: Cast aluminium Cover: Cast aluminium, all-round CR cellular rubber cord seal
Surface finish	Textured paint
Colour	RAL 7001
Supply includes	Enclosure with cover Cover screws, captive Screws for attaching support rails Screw for connection of the PE conductor
Protection category NEMA	NEMA 4
Protection category to IEC 60 529	IP 66
IK Code	IK08
Dimensions	Width: 260 mm Height: 160 mm Depth: 93 mm
Basic material	Cast aluminium
Packs of	1 pc(s).
Net weight	2.2 kg
Gross weight	2.34 kg
Customs tariff number	84879090

Features

ETIM 9	EC000261
ECLASS 8.0	27180101
Product description	GA Cast aluminium enclosure, WHD: 260x160x91 mm, Cast aluminum, without mounting plate, with cover

Approvals

Explanations	Declaration of conformity Declaration of conformity UK
--------------	---