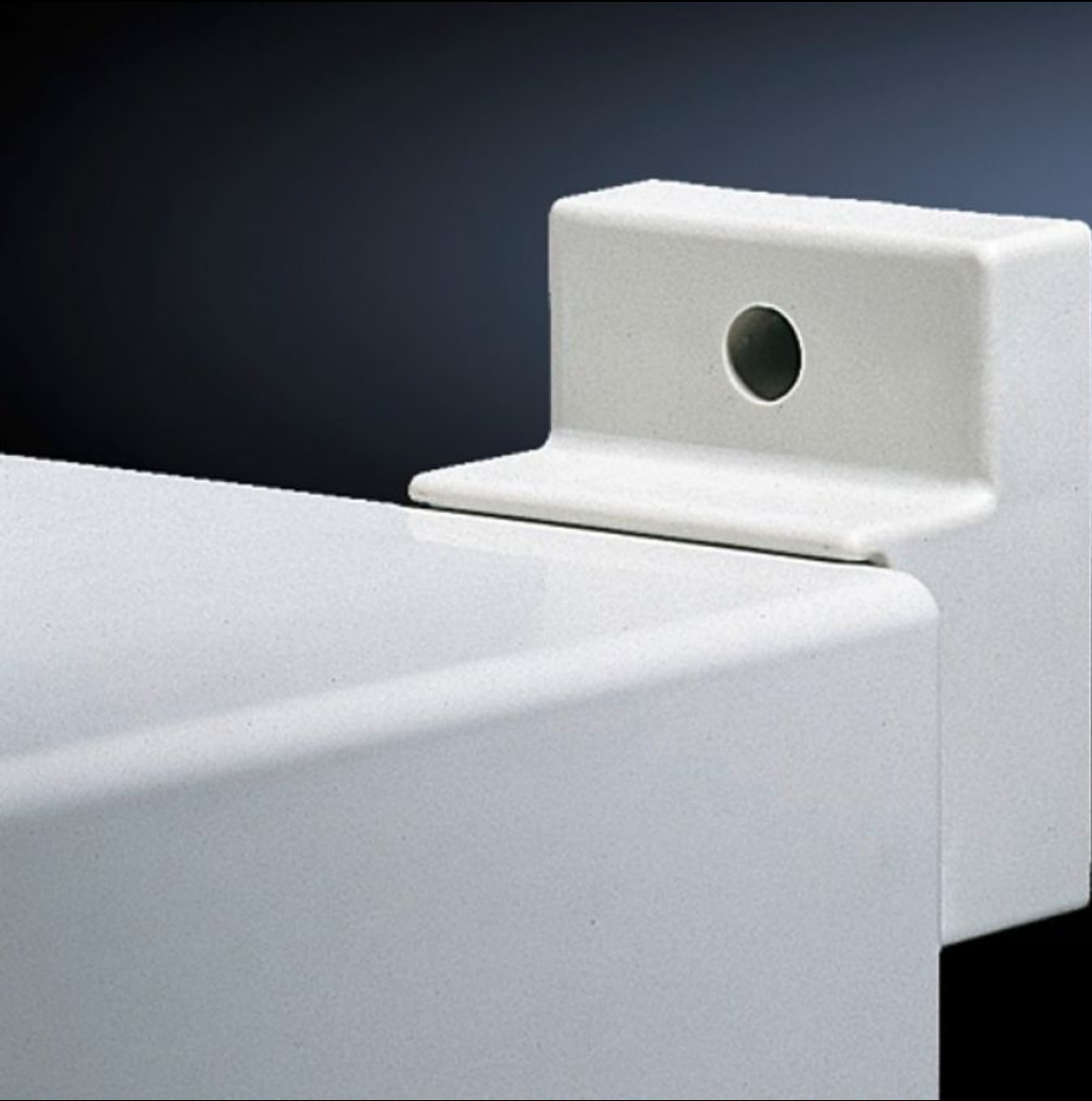


# Rittal – The System.

Faster – better – everywhere.



## KS 9266.000

# Wall mounting bracket

State: 04/07/2026 (Source: [rittal.com/gr-en](http://rittal.com/gr-en))

ENCLOSURES

POWER DISTRIBUTION

CLIMATE CONTROL

IT INFRASTRUCTURE

SOFTWARE & SERVICES

FRIEDHELM LOH GROUP



# KS 9266.000 - Wall mounting bracket for KS

For attaching to the enclosure from the outside. Distance from wall 30 mm.

## Features

|                       |  |
|-----------------------|--|
| Model No.             | KS 9266.000  |
| Product description   | For attachment to the wall, only possible from the outside of the enclosure. |
| Material              | Fibre-glass reinforced polycarbonate with graphite additive                  |
| Colour                | Similar to RAL 9011  |
| Supply includes       | Assembly parts for mounting on the enclosure                                 |
| Installation options  | For attaching to the enclosure from the outside                              |
| Note on Model No.     | for Ex applications  |
| To fit                | Enclosure type: KS   |
| Packs of              | 4 pc(s).   |
| Net weight            | 0.232 kg   |
| Gross weight          | 0.235 kg   |
| Customs tariff number | 83024900   |
| ETIM 9                | EC002625   |
| ECLASS 8.0            | 27189234   |
| Product description   | KS Wall mounting bracket for KS  |