

**Rittal – The System.**

Faster – better – everywhere.



**SV 9650.202**

**Maxi-PLS busbar, E-Cu**

State: 28/05/2026 (Source: [rittal.com/gr-en](http://rittal.com/gr-en))

ENCLOSURES

POWER DISTRIBUTION

CLIMATE CONTROL

IT INFRASTRUCTURE

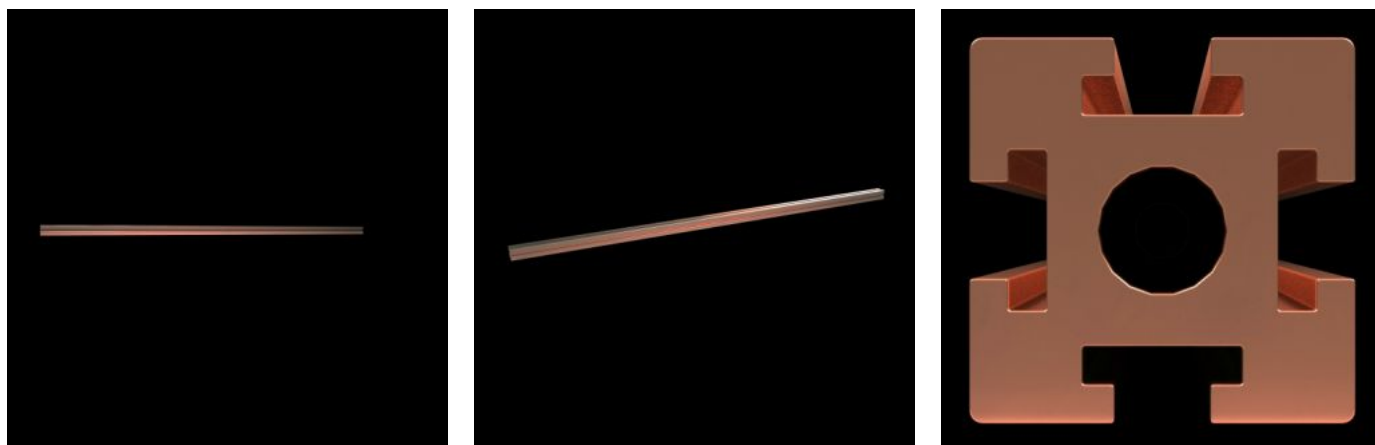
SOFTWARE & SERVICES

FRIEDHELM LOH GROUP



# SV 9650.202 - Maxi-PLS busbar, E-Cu for Maxi-PLS 60 system

Size: 60x60 mm, bar cross-section: 2323 mm<sup>2</sup>



## Features

Model No.	SV 9650.202
Product description	For assembling cable connection systems.
Material	E-Cu
Cross-section	2,323 mm <sup>2</sup>
Length	451 mm
Note	May be cut individually to required length
To fit	Width: = 600 mm
Packs of	1 pc(s).
Net weight	9.364 kg
Gross weight	9.364 kg
Copper weight (kg per piece)	9.364
Customs tariff number	74071000
ETIM 9	EC001522
ECLASS 8.0	27370303

# Features

---

Product description	SV Maxi-PLS busbar E-Cu, L: 451 mm, 60x60 mm, bar cross-section: 2323 mm <sup>2</sup>
---------------------	--

# Approvals

---

Approvals	DNV Lloyds Register UL + C-UL (listed)
-----------	--

---

Explanations	Declaration of conformity UK
--------------	------------------------------