

Rittal – The System.

Faster – better – everywhere.



SV 9650.291

Maxi-PLS busbar, E-Cu

State: 21/05/2026 (Source: rittal.com/gr-en)

ENCLOSURES

POWER DISTRIBUTION

CLIMATE CONTROL

IT INFRASTRUCTURE

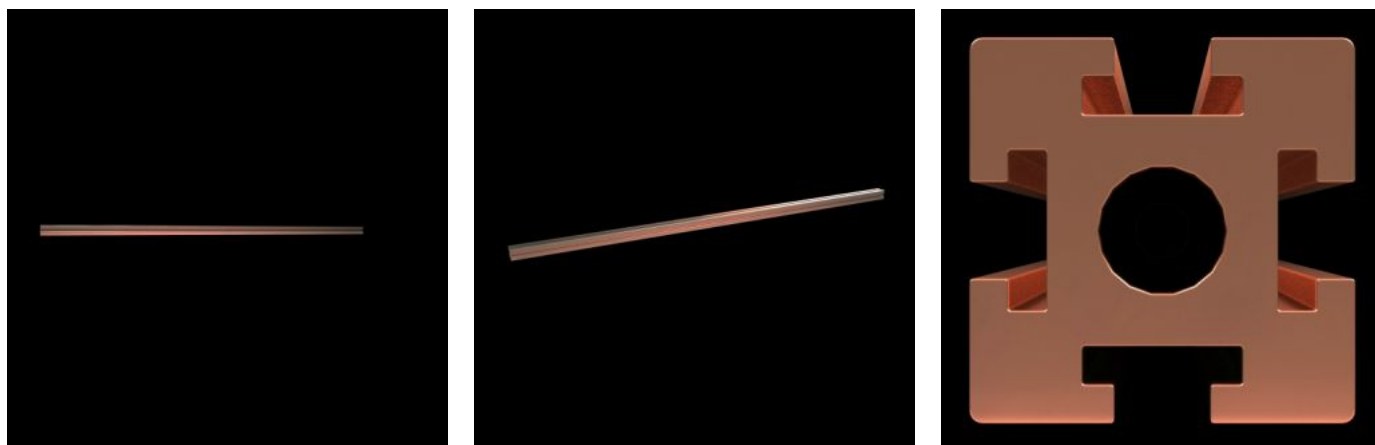
SOFTWARE & SERVICES

FRIEDHELM LOH GROUP



SV 9650.291 - Maxi-PLS busbar, E-Cu for Maxi-PLS 60 system

Size: 60x60 mm, bar cross-section: 2323 mm²



Features

Model No.	SV 9650.291
Product description	For assembling cable connection systems.
Material	E-Cu
Cross-section	2,323 mm ²
Length	1,091 mm
Note	May be cut individually to required length
To fit	Width: = 1,200 mm
Packs of	1 pc(s).
Net weight	22.55 kg
Gross weight	22.55 kg
Copper weight (kg per piece)	22.55
Customs tariff number	74071000
ETIM 9	EC002525
ECLASS 8.0	27370303
Product description	SV Maxi-PLS busbar E-Cu, L: 1091 mm, Maxi-PLS 3200

Approvals

Approvals

UL + C-UL (listed)

Explanations

Manufacturer's declaration

Declaration of conformity

Declaration of conformity UK