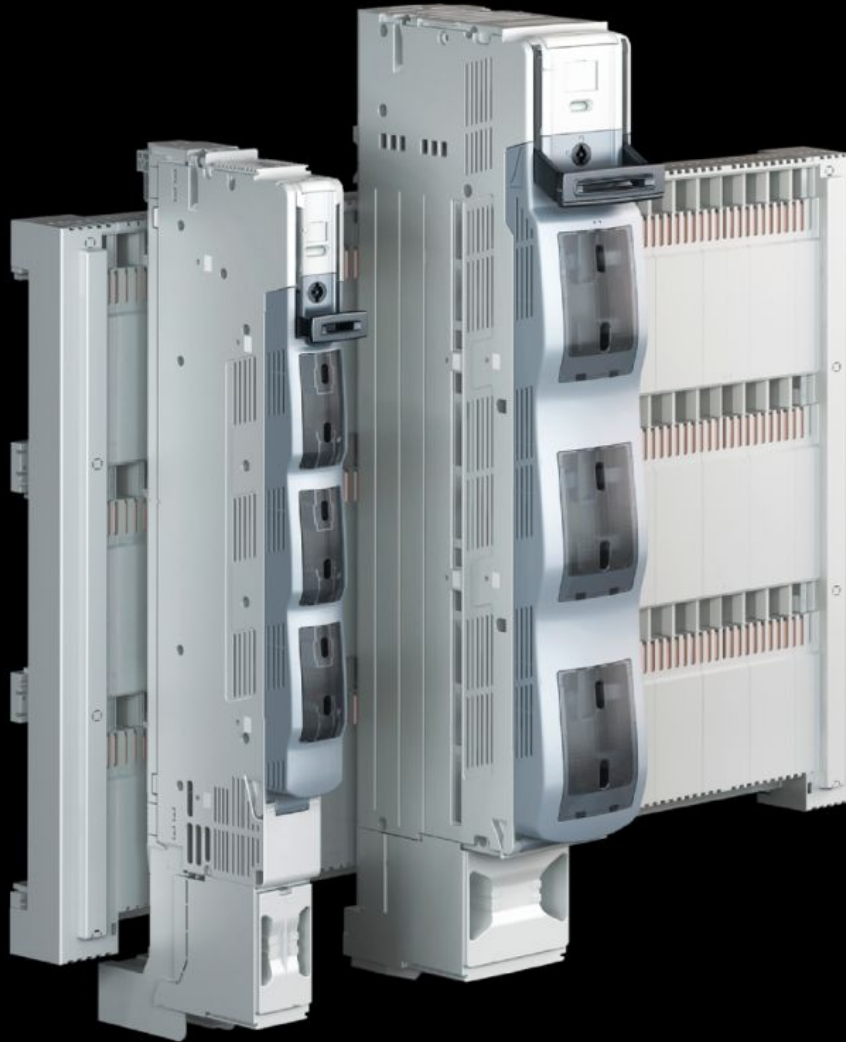


Rittal – The System.

Faster – better – everywhere.



SV 9677.080

NH slimline switch-disconnector

State: 03/04/2026 (Source: rittal.com/gr-en)

ENCLOSURES

POWER DISTRIBUTION

CLIMATE CONTROL

IT INFRASTRUCTURE

SOFTWARE & SERVICES

FRIEDHELM LOH GROUP



SV 9677.080 - NH slimline switch-disconnector with electronic fuse monitoring

3-pole, for bar systems with 185 mm centre-to-centre spacing.

Features

Model No.	SV 9677.080
Design	3-pole, switchable
Function principle	Automatic quick-break contact allows operator-independent switching Double-break for reliable disconnection of the contacts
Material	Polyamide Fire protection corresponding to UL 94-V0 Contact tracks: Partially silver-plated hard copper
Colour	Chassis: RAL 7035 Cover: RAL 7001 Handle: RAL 7016
For NH size	00
For bar systems with centre-to-centre spacing	185 mm
Cable outlet	Bottom
Type of electrical connection	Screw M8
Installation type	Clamping attachment
Number of poles	3-pole
Rated operating voltage	400 V, 3~
Rated operating current max.	160 A
Test specification	IEC/DIN EN 60 947-3 DIN EN 60 269-2 (fuse inserts)
For converter installation	Yes

Features

Dimensions	Width: 50 mm Height: 860 mm
Connection of round conductors	1.5 - 95 mm ²
To fit busbars	Height: 10 mm
Packs of	1 pc(s).
Net weight	5 kg
Gross weight	5.48 kg
Copper weight (kg per piece)	1.072
Customs tariff number	85043129
ETIM 9	EC001040
ECLASS 8.0	27371401
Product description	SV NH slimline switch disconnecter, size 00, 160 A, 400 V, 3-pole, screw M8, 185 mm, cable outlet bottom, clamping attachment

Approvals

Explanations	Declaration of conformity Declaration of conformity UK
--------------	---