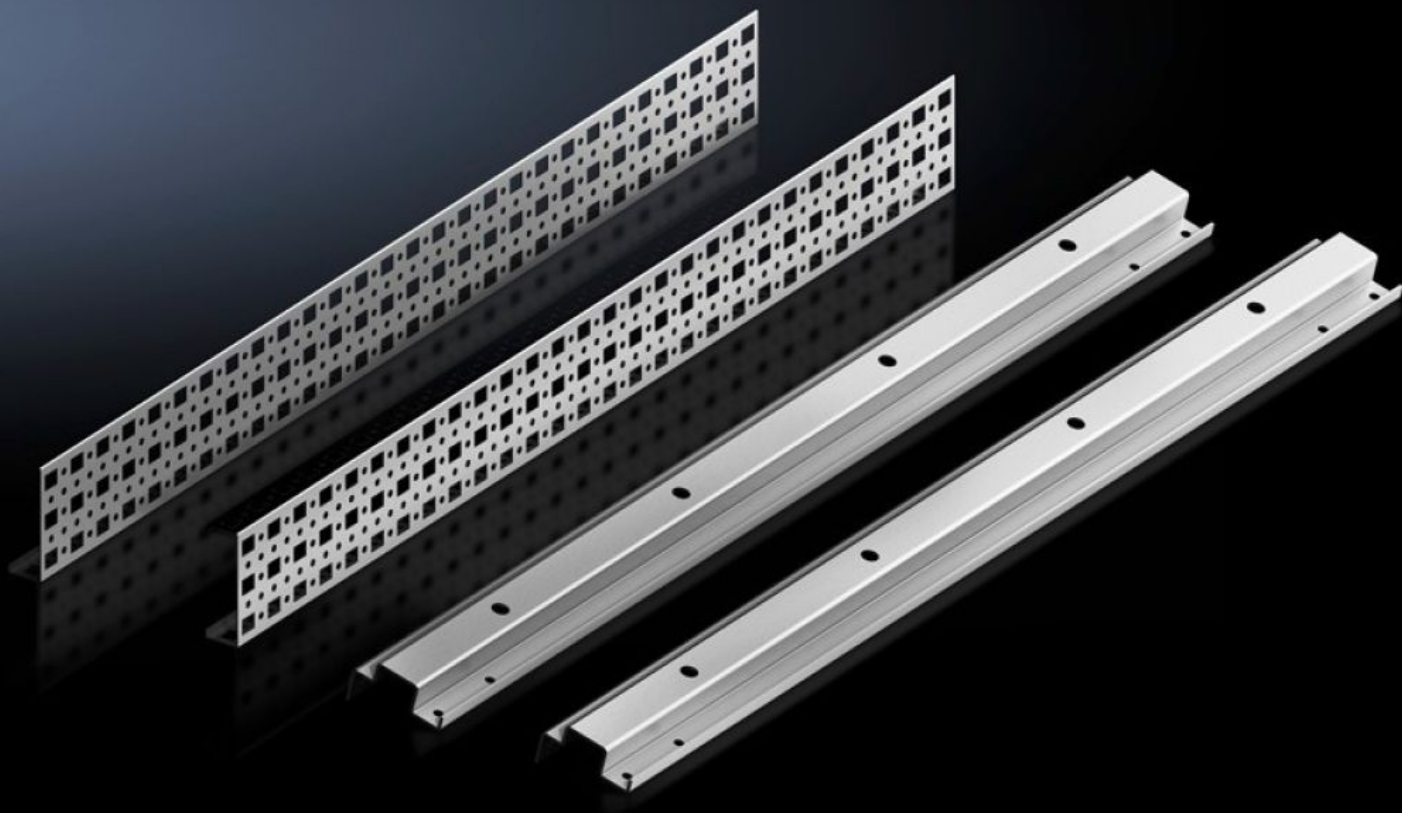
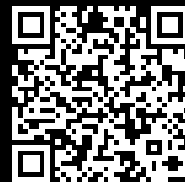


Rittal – The System.

Faster – better – everywhere.



SV 9677.520 System attachment

State: 07/12/2025 (Source: rittal.com/gr-en)

ENCLOSURES

POWER DISTRIBUTION

CLIMATE CONTROL

IT INFRASTRUCTURE

SOFTWARE & SERVICES

FRIEDHELM LOH GROUP



SV 9677.520 - System attachment for TS, VX SE

For attaching busbar systems with 185 mm centre-to-centre spacing in TS/SE enclosures.

Features

| | |
|-----------------------|---|
| Model No. | SV 9677.520 |
| Product description | For attaching busbar systems with 185 mm centre-to-centre spacing in TS/SE enclosures. |
| Material | Sheet steel |
| Surface finish | Zinc-plated |
| Supply includes | 2 system attachments (left/right) 2 punched sections without mounting flanges Assembly parts |
| Assembly instruction | For variable depth adjustment of the busbar system in the enclosure, the TS punched section with mounting flange 17 x 73 mm (for the outer mounting level) is additionally required. Select according to the enclosure depth. |
| Packs of | 1 pc(s). |
| Net weight | 3.87 |
| Gross weight | 3.99 |
| Customs tariff number | 83024900 |
| EAN | 4028177705340 |
| ETIM 9 | EC001900 |
| ECLASS 8.0 | 27400613 |