

Rittal – The System.

Faster – better – everywhere.



CS 9791.045

Outdoor wall-mounted enclosures

State: 06/09/2025 (Source: [rittal.com/gr-en](https://www.rittal.com/gr-en))

ENCLOSURES

POWER DISTRIBUTION

CLIMATE CONTROL

IT INFRASTRUCTURE

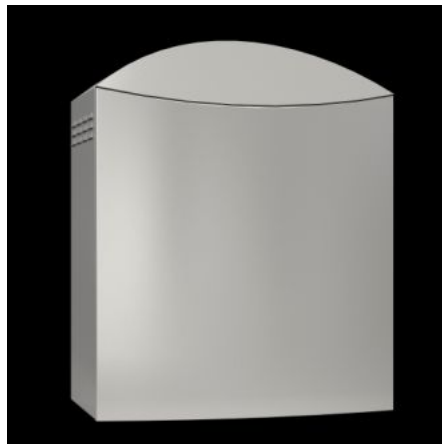
SOFTWARE & SERVICES

FRIEDHELM LOH GROUP



CS 9791.045 - Outdoor wall-mounted enclosures

Outdoor enclosures for wall or pole mounting. Enclosure-within-an-enclosure concept, outer enclosure with cut-out at the bottom and integrated louvres on the rear panel and side panels for ventilation.



Features

Model No.	CS 9791.045
Product description	Outdoor enclosures for wall or pole mounting. Enclosure-within-an-enclosure concept, outer enclosure with cut-out in the bottom and integrated louvres on the rear panel and side panels for ventilation.
Material	Enclosure and mounting plate: Aluminium, AlMg3 Door, inner enclosure: Stainless steel 1.4301 (AISI 304)
Surface finish	Enclosure: Powder-coated, UV-resistant pure polyester
Colour	RAL 7035
Supply includes	Double-walled outdoor enclosure, fully preconfigured Inner enclosure with mounting plate, gland plate and security lock Mounting bracket for enclosure internal thermostat or hygrostat Outer enclosure with designer cover and security lock 3524 E 2 C rails on the rear panel 2 security locks
Dimensions	Width: 630 mm Height: 780 mm Depth: 380 mm

Features

Clearances	Clearance width: 560 mm Clearance height: 560 mm Clearance depth: 308 mm
Dimensions mounting plate (W x H)	550 mm x 550 mm
Inner enclosure	Width: 580 mm Height: 580 mm Depth: 333 mm
Lock	Lock version: Cam Number of locks: 2
IP protection category to IEC 60 529	IP 55
Note	Extended delivery times.
Basic material	Aluminium
Packs of	1 pc(s).
Net weight	22.254
Gross weight	23.425
Customs tariff number	94032080
EAN	4028177193727
ETIM 9	EC000261
ECLASS 8.0	27180101

Approvals

Explanations	Declaration of conformity Declaration of conformity UK
--------------	---

Tender text

Outdoor wall-mounted enclosure

Dual-shell outdoor aluminium enclosure for pole or wall mounting, consists of an outdoor enclosure with louver ventilation, security lock and a lockable interior enclosure with mounting plate.

Interior enclosure: Body: 1.5 mm aluminium, folded and welded from a single piece with protection channel around the door opening. Screwed on gland plate fitted at top (W x D = 302 x 122 mm) and bottom (W x D = 182 x 52 mm). Thermostat mounting holder fitted at top left. Door: 2 mm aluminium, mounted, with foamed-in sealer and screwed on hinges, 180° opening angle, cam lock with security lock Mounting plate: 2 mm aluminium

Outer enclosure: Enclosure with removable cover and security lock design. Ventilation louvers in upper left, right and rear sections; rows of ventilation holes in the left and right side of the base. Screwed on gland plate at the bottom. Two C-rails screwed on at the rear for mounting a pole attachment. Enclosure cover with recessed handle.

Material Interior enclosure, outer enclosure and mounting plate: Aluminium AlMg3

Surface: Interior enclosure and outer enclosure: Powder-coated in RAL 7035 Mounting plate: zinc-plated, passivated

Dimensions: Interior enclosure: W x H x D: 580 x 580 x 333 mm Outer enclosure: W x H x D: 630 x 780 x 380 mm

Protection category: IP 55 to EN 60 529/10.9

Model: Rittal Type: Outdoor wall-mounting enclosure CS Pos. Tender text for outdoor wall-mounted enclosure

Outdoor wall-mounted enclosure

Dual-shell outdoor aluminium enclosure for pole or wall

mounting, consists of an outdoor enclosure with louver ventilation, security lock and a lockable interior enclosure with mounting plate.

Interior enclosure: Body: 1.5 mm aluminium, folded and welded from a single piece with protection channel around the door opening. Screwed on gland plate fitted at top (W x D = 302 x 122 mm) and bottom (W x D = 182 x 52 mm). Thermostat mounting holder fitted at top left. Door: 1,5 stainless steel, mounted, with foamed-in sealer and screwed on hinges, 180° opening angle, cam lock with security lock Mounting plate: 2 mm aluminium

Outer enclosure: Enclosure with removable cover and security lock design. Ventilation louvers in upper left, right and rear sections; rows of ventilation holes in the left and right side of the base. Screwed on gland plate at the bottom. Two C-rails screwed on at the rear for mounting a pole attachment. Enclosure cover with recessed handle.

Material Interior enclosure, outer enclosure and mounting plate: Aluminium AlMg3

Surface: Interior enclosure and outer enclosure: Powder-coated in RAL 7035 Mounting plate: zinc-plated, passivated

Dimensions: Interior enclosure: W x H x D: 580 x 580 x 333 mm Outer enclosure: W x H x D: 630 x 780 x 380 mm

Protection category: IP 55 to EN 60 529/10.9