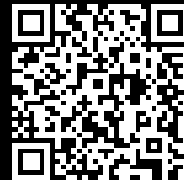


# Rittal – The System.

Faster – better – everywhere.



## AX 1469.000

## Plastic enclosures AX

State: 13.02.2026. (Source: [rittal.com/hr-hr](https://www.rittal.com/hr-hr))

ENCLOSURES

POWER DISTRIBUTION

CLIMATE CONTROL

IT INFRASTRUCTURE

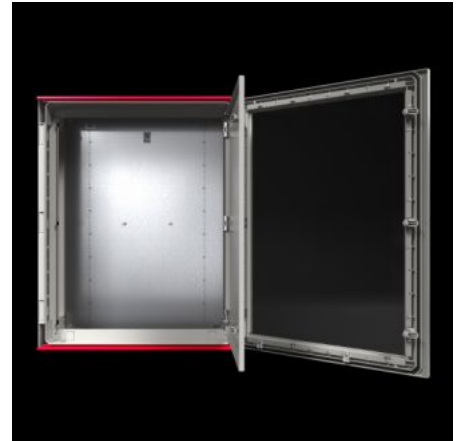
SOFTWARE & SERVICES

FRIEDHELM LOH GROUP



# AX 1469.000 - Plastic enclosures AX with viewing window

AX plastic enclosures with viewing window are ideal for applications in challenging situations. Numerous mounting bosses inside the enclosure allow individual interior configuration on a 25 mm pitch pattern, e.g. with punched sections and rails.



## Features

Model No.	AX 1469.000
Design	with viewing window
Material	Enclosure and door: Fibreglass-reinforced unsaturated polyester Door: All-round foamed-in PU seal Mounting plate: Sheet steel Viewing window: Polycarbonate Fire protection corresponding to UL 94-V0 Halogen free
Surface finish	Enclosure and door: Dyed plastic with no after-treatment Mounting plate: Zinc-plated
Colour	Similar to RAL 7035
Supply includes	Enclosure with hinged door with viewing window, of all-round solid construction, 3 mm double-bit lock Door hinged on the right, may be swapped to the left Mounting plate Twin seal on the top and bottom edges of the door as integral rain protection strip

# Features

Note	If exposed to long-term UV radiation (sunlight) and rain, we recommend spray-finishing the surface with a PUR paint to avoid any visual impairments to the surface. Prices and delivery times on request.
Protection category NEMA	NEMA 1 NEMA 3R NEMA 3RX NEMA 4 NEMA 4X NEMA 12
Protection category to IEC 60 529	IP 56
Type rating to UL 50E	Type 1 Type 3R Type 3RX Type 4 Type 4X Type 12
Protection class	II (at 1000 V AC)
IK Code	IK09
Dimensions	Width: 600 mm Height: 800 mm Depth: 300 mm
Material thickness of mounting plate	3 mm
Dimensions mounting plate (W x H)	505 mm x 725 mm
Door opening angle	130°
Number of locks	2
With viewing window	Yes
Basic material	Plastic
Standards	Meets the F1 outdoor rating to UL 746C

## Features

Assembly instruction	Interior installation screws are required to secure components inside the enclosure Components such as punched sections with mounting flanges may be attached on a 25 mm pitch pattern using the universal bracket
Packs of	1 pc(s).
Net weight	23.44
Gross weight	24.44
Customs tariff number	94037000
EAN	4028177006997
E-Number Sweden	E3465358
ETIM 9	EC000261
ETIM 8	EC000261
ECLASS 8.0	27180101

## Approvals

Approvals	DNV-GL Lloyds Register of Shipping UL + C-UL (listed)
Certificates	Negative Certificate Surface finish Protection category
Explanations	Declaration of conformity Declaration of conformity UK

## Tender text

Enclosure (Plastic Enclosure AX with viewing window)

Housing with door:

Insulated housing, class II according to VDE 100, part 410  
with hinged door with window,  
closed all around, 3 mm double-bit insert.

Body made of one piece of impact resistant,  
glass fibre reinforced and unsaturated polyester,  
self-extinguishing according to UL 94 V-0.

Temperature resistant between -30°C and +75° C

Colour similar to RAL 7035.

Double sealing at upper and lower edge of door  
as a rain protection strip.

Body encapsulated and with numerous fastening domes  
for interior fittings.

Doors with circumferential foamed-in PU foam seal,  
circumferential door reinforcement frame with  
fastening domes for door installation.

Door with 130° hinge in stainless steel, door opening  
angle 130°, door hinge can be changed from left to right.

Integrated runner on the underside of the door.

Mounting plate: with keyhole for earthing,  
with dimensional imprint, fastened with Limbach nuts.

QR Code:

Printed QR Code on body, mounting plate, door  
and typeplate for clear identification and for  
easy access to relevant product information and  
documentation, as well as clear traceability of the  
individual parts.

Accessories:

Mini comfort handle, locking inserts, universal angle

Wall mounting bracket, system punched-sections,  
mounting brackets, wiring plan pockets, door stay,  
screws for interior fittings.

Material:

Housing, door: glass fibre reinforced,  
unsaturated polyester GRP

Surface finish: not post-treated,  
dyed plastic

Window: Polycarbonate

Mounting plate: sheet steel, galvanised

Fire behaviour of material: according to UL 94 V-0

Approvals and protection classes:

Material approved to UL 746 C

Protection class according to IEC 62 208: IP 56

Impact protection according to IEC 62 262: IK 09

Protection class according to UL 50E: Type 12

Cabinet approved according to UL 508A

Protective insulation, class II at 1000 V AC

Dimension (W x H x D): 600x800x300 mm