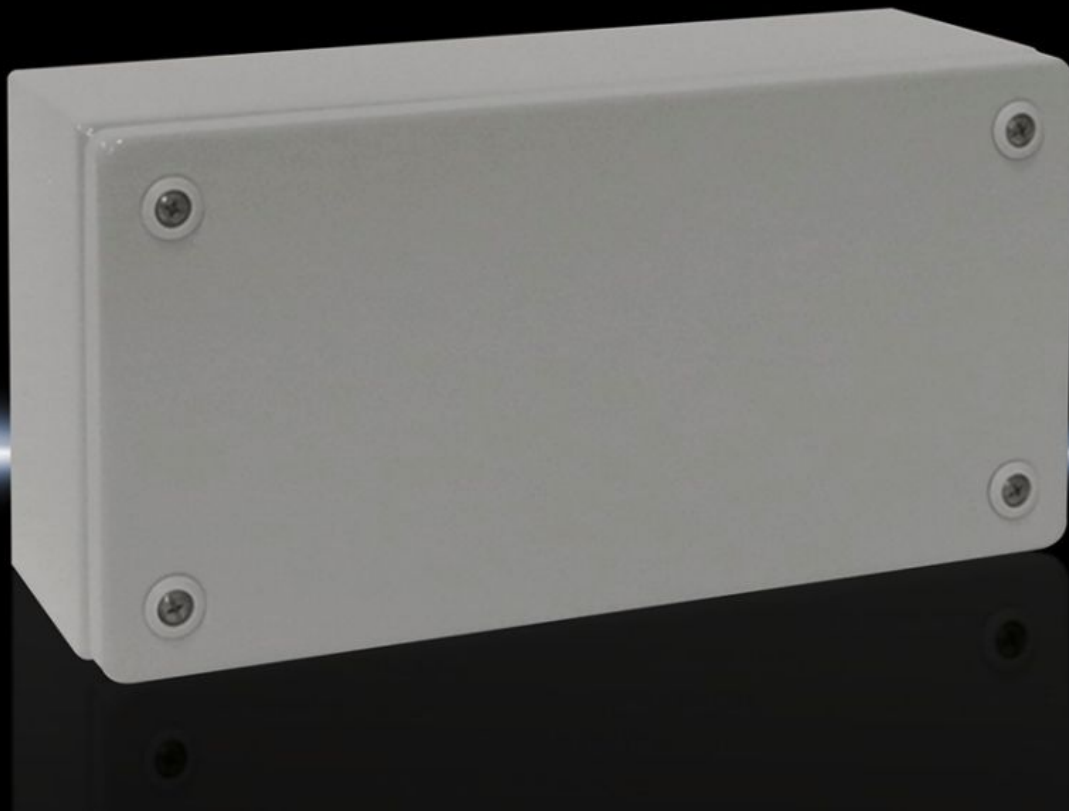


# Rittal – The System.

Faster – better – everywhere.



## KL 1501.510 Terminal boxes KL

State: 21.06.2026. (Source: [rittal.com/hr-hr](http://rittal.com/hr-hr))

ENCLOSURES

POWER DISTRIBUTION

CLIMATE CONTROL

IT INFRASTRUCTURE

SOFTWARE & SERVICES

FRIEDHELM LOH GROUP



# KL 1501.510 - Terminal boxes KL without gland plate

Spray-finished enclosure with sheet steel cover, without gland plate Protection category IP 66.

## Features

|                                   |   |
|-----------------------------------|---|
| Model No.                         | KL 1501.510   |
| Material                          | Enclosure: Sheet steel<br>Cover: Sheet steel, all-round foamed-in PU seal         |
| Surface finish                    | Enclosure and cover: Dipcoat primed, powder-coated on the outside, textured paint |
| Colour                            | RAL 7035  |
| Supply includes                   | Enclosure with cover<br>Quick-release fastener including plastic bushes           |
| Protection category NEMA          | NEMA 4  |
| Protection category to IEC 60 529 | IP 66   |
| IK Code                           | IK08  |
| Dimensions                        | Width: 300 mm<br>Height: 150 mm<br>Depth: 120 mm                                  |
| Material thickness - cover        | 1,25 mm   |
| Material thickness - enclosure    | 1,25 mm   |
| Basic material                    | Sheet steel   |
| Packs of                          | 1 pc(s).  |
| Net weight                        | 2,23 kg   |
| Gross weight                      | 2,38 kg   |
| Customs tariff number             | 73269098  |
| ETIM 9                            | EC000261  |
| ETIM 8                            | EC000261  |
| ECLASS 8.0                        | 27180101  |

# Features

---

|                     |  |
|---------------------|--|
| Product description | KL Terminal box, WHD: 300x150x120 mm, Sheet steel, without mounting plate, with cover, without gland plate |
|---------------------|--|

# Approvals

---

|           |  |
|-----------|--|
| Approvals | Bureau Veritas<br>DNV<br>Lloyds Register<br>UL + C-UL (listed) |
|-----------|--|

---

|              |  |
|--------------|--|
| Explanations | Manufacturer's declaration<br>Declaration of conformity UK |
|--------------|--|

# Tender text

Terminal box without gland plate (120 mm deep),  
protection category IP 66

## Enclosure:

Robust steel sheet construction, body made from a single folded and welded piece with protection channel around the cover opening; rear panel with counter-sunk holes for wall mounting brackets; steel sheet cover, flush-mounted with highly elastic, foamed-in special seal, with PE conductor connections in the cover and enclosure; with transverse strips fitted on both sides, mounting holes, special plastic bushes for captive cover screws and also used as screwdriver guides.

## Accessories:

Enclosure quick-release fastener, cover retainer,  
plastic cable gland plate, cover hinges, mounting plate

## Surface finish:

Panels cleaned, degreased, phosphated, electrophoretic dipcoat primed and powder-coated with polyester powder in textured RAL 7035.

Dimensions (W x H x D): 300 x 150 x 120 mm