

# Rittal – The System.

Faster – better – everywhere.



## KL 1516.510 Terminal boxes KL

State: 17.04.2026. (Source: [rittal.com/hr-hr](http://rittal.com/hr-hr))

ENCLOSURES

POWER DISTRIBUTION

CLIMATE CONTROL

IT INFRASTRUCTURE

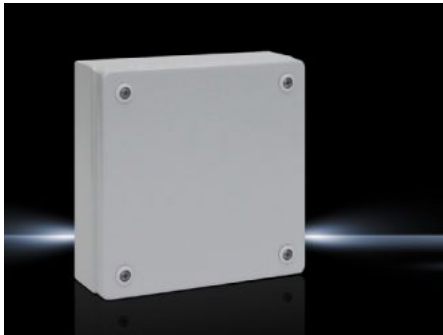
SOFTWARE & SERVICES

FRIEDHELM LOH GROUP



# KL 1516.510 - Terminal boxes KL without gland plate

Spray-finished enclosure with sheet steel cover, without gland plate Protection category IP 66.



## Features

Model No.	KL 1516.510
Material	Enclosure: Sheet steel Cover: Sheet steel, all-round foamed-in PU seal
Surface finish	Enclosure and cover: Dipcoat primed, powder-coated on the outside, textured paint
Colour	RAL 7035
Supply includes	Enclosure with cover Quick-release fastener including plastic bushes
Protection category NEMA	NEMA 4
Protection category to IEC 60 529	IP 66
IK Code	IK08
Dimensions	Width: 200 mm Height: 200 mm Depth: 80 mm
Material thickness - cover	1,25 mm
Material thickness - enclosure	1,25 mm
Basic material	Sheet steel
Packs of	1 pc(s).
Net weight	1,586 kg

# Features

---

Gross weight	1,786 kg
Customs tariff number	73269098
ETIM 9	EC000261
ETIM 8	EC000261
ECLASS 8.0	27180101
Product description	KL Terminal box, WHD: 200x200x80 mm, Sheet steel, without mounting plate, with cover, without gland plate

---

# Approvals

---

Approvals	Bureau Veritas DNV-GL Lloyds Register of Shipping UL + C-UL (listed)
Explanations	Manufacturer's declaration Declaration of conformity UK

---

# Tender text

Terminal box without gland plate (80 mm deep), protection cat. IP 66

Enclosure:

sturdy sheet steel construction, folded and welded from a single piece, with all-round protection channel on the cover aperture, rear panel with recessed holes for wall mounting brackets, cover of sheet steel, sealed, with a highly elastic, foamed-in special seal, facilities for connecting PE conductors in the cover and box, profile strips on both internal sides with mounting holes. Special plastic bush guards against accidental loss of the cover screws and provides screwdriver guidance.

Accessories:

quick-release fastener, cover retainer, plastic cable gland plate, cover hinges, mounting plate

Surface finish:

steel is cleaned, degreased, phosphated, electrophoretic dipcoat primed and electrostatically polyester powder-coated in textured RAL 7035

Dimensions (W x H x D): 200 x 200 x 80 mm