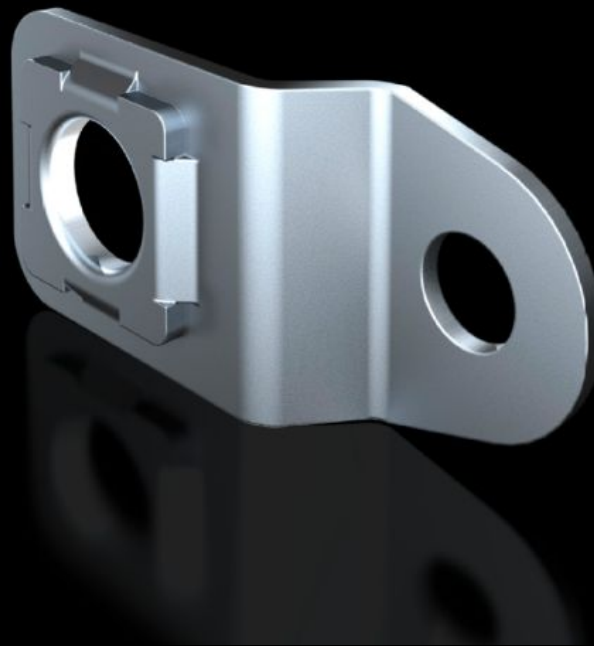


Rittal – The System.

Faster – better – everywhere.



SZ 1590.010

Wall mounting bracket

State: 28.06.2026. (Source: [rittal.com/hr-hr](https://www.rittal.com/hr-hr))

ENCLOSURES

POWER DISTRIBUTION

CLIMATE CONTROL

IT INFRASTRUCTURE

SOFTWARE & SERVICES

FRIEDHELM LOH GROUP



SZ 1590.010 - Wall mounting bracket for AX sheet steel, KX sheet steel, AX IT, EL

For the attachment of AX and KX sheet steel enclosures.

Features

Model No.	SZ 1590.010
Product description	For the attachment of AX and KX sheet steel enclosures.
Benefits	Screw-fastened directly from the rear with a self-tapping screw into the enclosure eyelet
Material	Sheet steel, zinc-plated
Supply includes	Assembly parts
Wall distance	10 mm
To fit	Enclosure type: AX sheet steel KX sheet steel AX wall-mounted enclosure, 3-part
Type rating to UL 50E	Type 1 Type 3R Type 4 Type 12
Packs of	4 pc(s).
Net weight	0,132 kg
Gross weight	0,168 kg
PCF per pack (cradle-to-gate)	0.5 kg CO2 eq (Cat B)
Note on PCF category	Category B: PCF value (cradle-to-gate) based on the product weight, approximately calculated and self-declared
Customs tariff number	83025000
ETIM 9	EC002625
ETIM 8	EC002625
ECLASS 8.0	27189234

Features

Product description	SZ Wall mounting bracket, for AX and KX, sheet steel, wall distance: 10 mm
---------------------	---

Approvals

Approvals	DNV UL + C-UL - FTTA
-----------	-------------------------