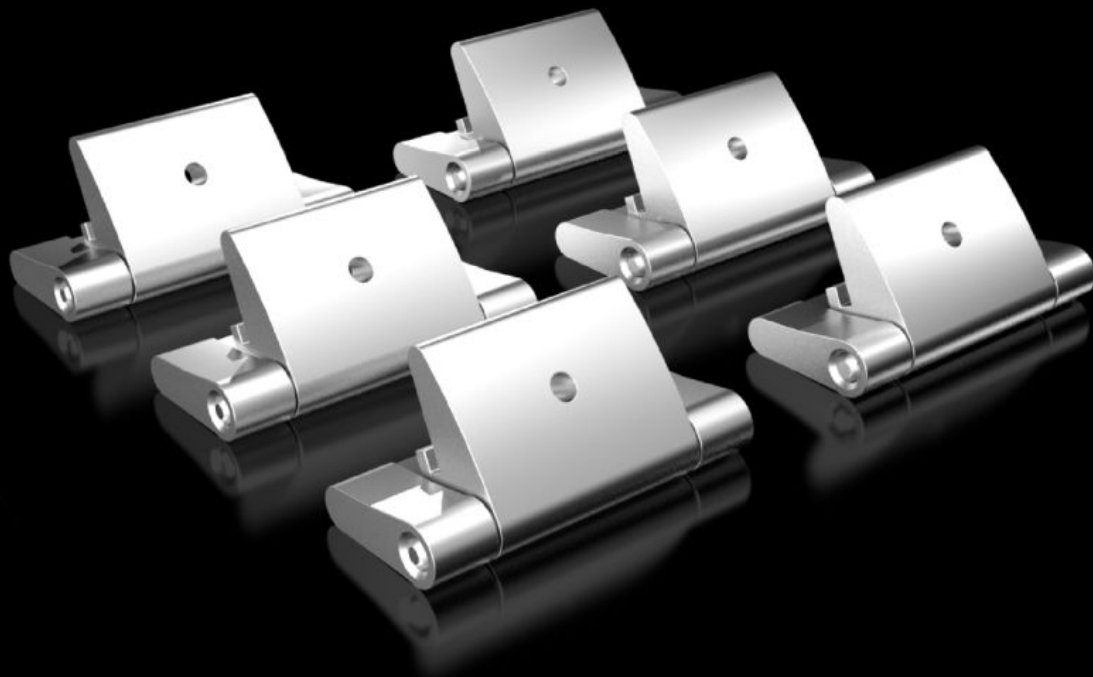


# Rittal – The System.

Faster – better – everywhere.



## KX 1592.220 Cover hinge

State: 11.04.2026. (Source: [rittal.com/hr-hr](http://rittal.com/hr-hr))

ENCLOSURES

POWER DISTRIBUTION

CLIMATE CONTROL

IT INFRASTRUCTURE

SOFTWARE & SERVICES

FRIEDHELM LOH GROUP



# KX 1592.220 - Cover hinge for terminal box KX

The cover hinge may be screw-fastened all the way round the enclosure protection channel and to the edge fold. The position of the installation holes is prepunched, so no need to measure and mark out. To extend the door opening angle to 180°.

## Features

Model No.	KX 1592.220
Product description	The cover hinge may be screw-fastened all the way round the enclosure protection channel and to the edge fold. The position of the installation holes is prepunched, so no need to measure and mark out.
Material	Die-cast zinc
Supply includes	Cover hinge Stoppers Assembly parts
Note	For a door opening angle of up to 180°
Packs of	6 pc(s).
Net weight	0,156 kg
Gross weight	0,165 kg
Customs tariff number	83021000
ETIM 9	EC001167
ETIM 8	EC001167
ECLASS 8.0	27409219
Product description	KX Cover hinge, for terminal boxes KX, die-cast zinc

## Approvals

Approvals	UL + C-UL - FTTA
-----------	------------------