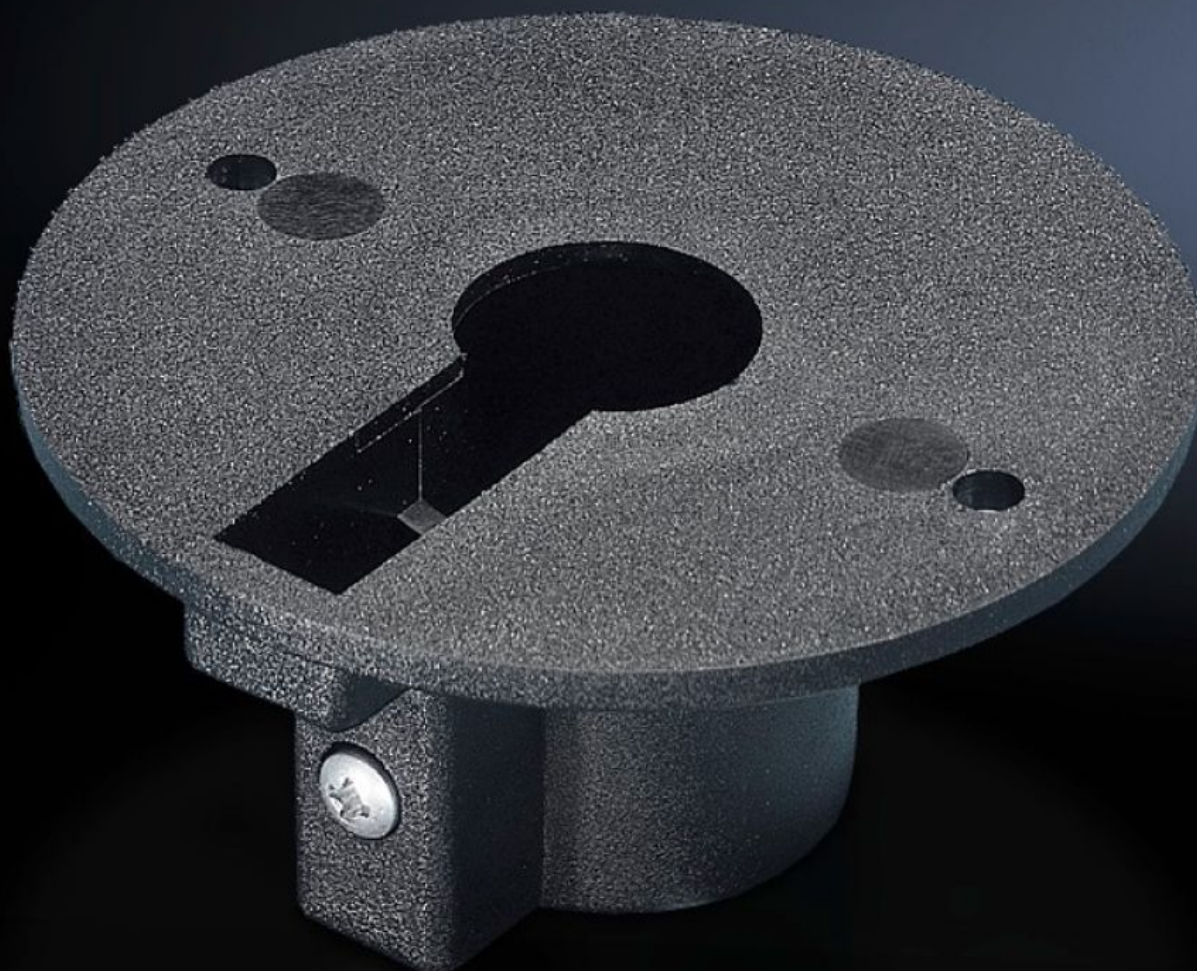
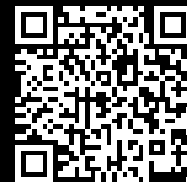


Rittal – The System.

Faster – better – everywhere.



SG 2372.120 Connection adaptor

State: 16.12.2025. (Source: [rittal.com/hr-hr](https://www.rittal.com/hr-hr))

ENCLOSURES

POWER DISTRIBUTION

CLIMATE CONTROL

IT INFRASTRUCTURE

SOFTWARE & SERVICES

FRIEDHELM LOH GROUP



SG 2372.120 - Connection adaptor for signal pillar, LED compact

For conduit mounting and mounting on support arm systems.



Features

Model No.	SG 2372.120
Product description	For conduit mounting and mounting on support arm systems.
Material	Plastic
Colour	Black
Signal pillar	LED compact
Packs of	1 pc(s).
Net weight	0.019
Gross weight	0.023
Customs tariff number	39269097
EAN	4028177444058
ECLASS 8.0	27189234

Approvals

Approvals	UR
-----------	----