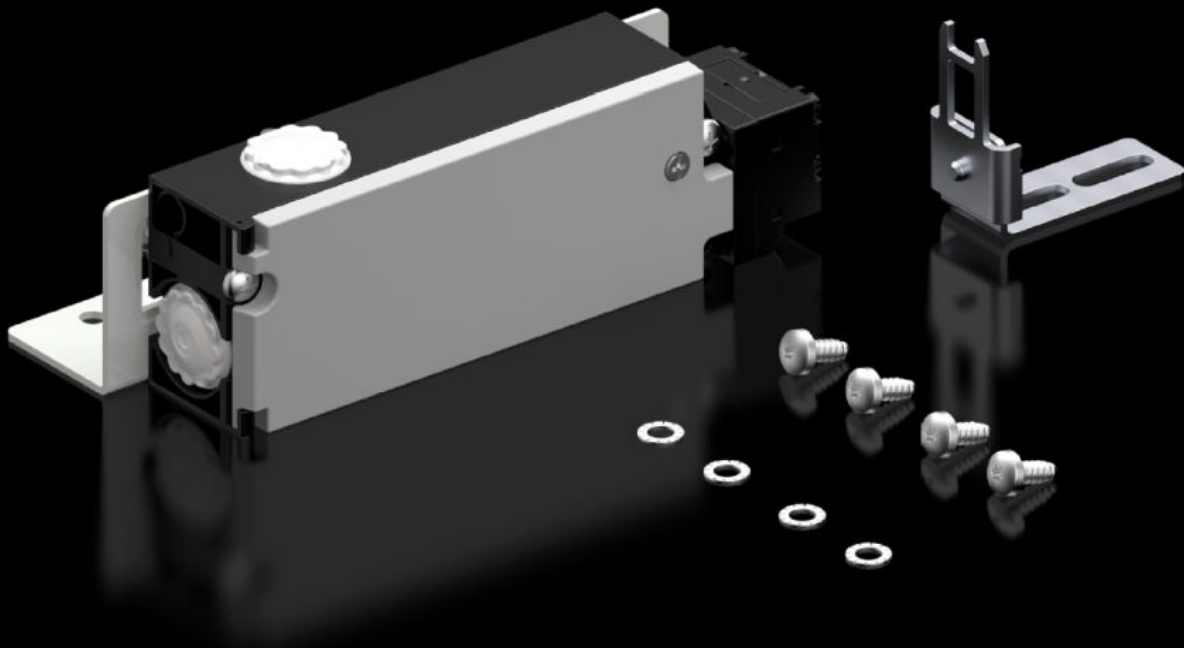


Rittal – The System.

Faster – better – everywhere.



SZ 2418.000

Safety lock

State: 04.06.2026. (Source: rittal.com/hr-hr)

ENCLOSURES

POWER DISTRIBUTION

CLIMATE CONTROL

IT INFRASTRUCTURE

SOFTWARE & SERVICES

FRIEDHELM LOH GROUP



SZ 2418.000 - Safety lock

Fitted to doors, to protect against contact with live electrical equipment whilst the master switch is ON.

Features

Model No.	SZ 2418.000
Product description	Fitted to doors, to protect against contact with live electrical equipment whilst the master switch is ON.
Function principle	Locks the door when the master switch is ON. Mains power (voltage) is only enabled whilst the door is closed. Monitoring of the lock magnet via an additional closing contact.
Supply includes	Lock Actuator Angle bracket Assembly parts
Assembly instruction	In two-door enclosures, the door-operated switch is required for the overlapping door, to indicate "enclosure door closed"
To fit	Enclosure type: VX Enclosure type: VX SE Enclosure type: TS Enclosure type: AX
Power consumption Pel	With DC: 8 W
Rated operating voltage	24 V (DC)
Rated insulation voltage	400 V AC
Rated impulse withstand voltage, phase to phase	4000 V AC
Packs of	1 pc(s).
Net weight	0,76 kg
Gross weight	0,847 kg
Customs tariff number	85365019
ETIM 9	EC002626

Features

ETIM 8	EC002626
ECLASS 8.0	27189266
Product description	SZ Security lock, 24 V DC

Approvals

Approvals	CSA UL
Explanations	Declaration of conformity Declaration of conformity UK
