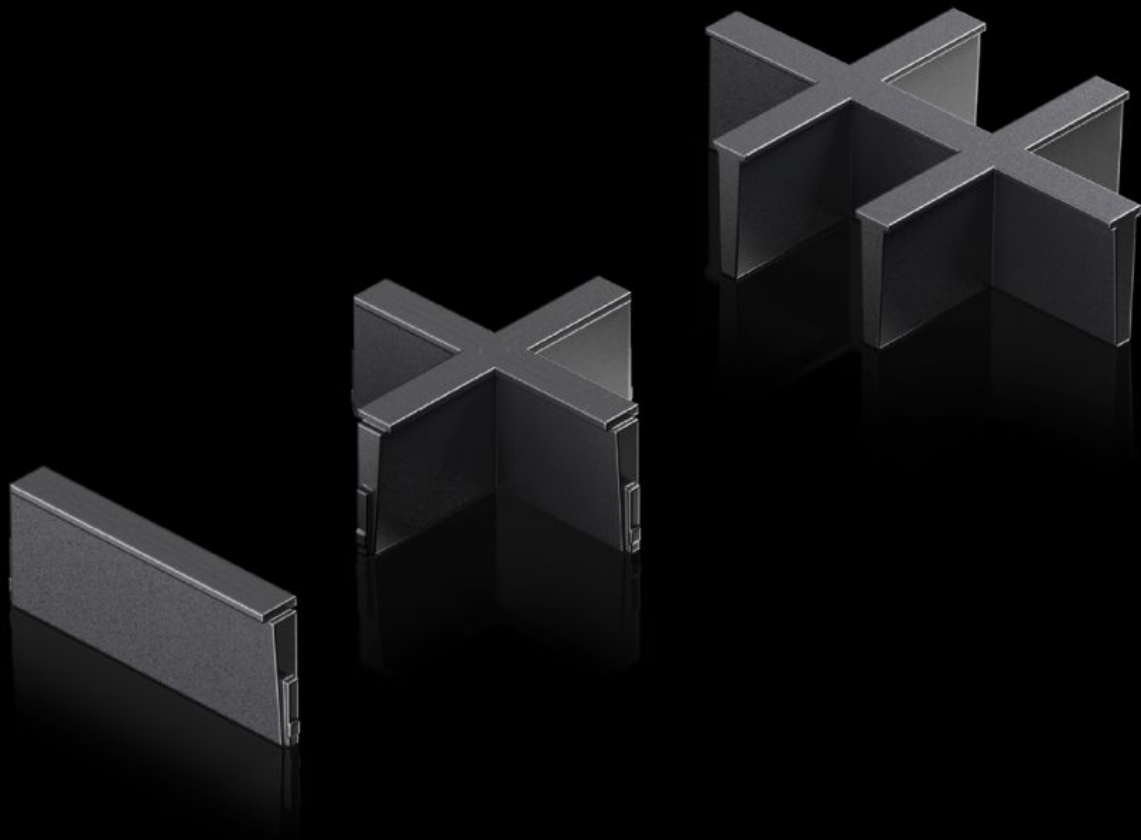


# Rittal – The System.

Faster – better – everywhere.



## AX 2582.400

## Inlay

State: 11.07.2026. (Source: [rittal.com/hr-hr](http://rittal.com/hr-hr))

ENCLOSURES

POWER DISTRIBUTION

CLIMATE CONTROL

IT INFRASTRUCTURE

SOFTWARE & SERVICES

FRIEDHELM LOH GROUP



# AX 2582.400 - Inlay For plastic gland plate, modular and sealing frame, modular

Individual inserts to subdivide the cut-outs in the modular plastic gland plate and the modular sealing frame.

## Features

Model No.	AX 2582.400
Design	4 slots
Product description	Individual inserts to subdivide the cut-outs in the modular plastic gland plate and the modular sealing frame.
Material	Plastic
Colour	Black
Packs of	5 pc(s).
Net weight	0,005 kg
Gross weight	0,029 kg
Customs tariff number	40091200
ETIM 9	EC000211
ETIM 8	EC000211
ECLASS 8.0	27142421
Product description	SZ Inlay, for cable entry, modular, design: 4 slots

## Approvals

Approvals	UR + C-UR (recognized)
-----------	------------------------