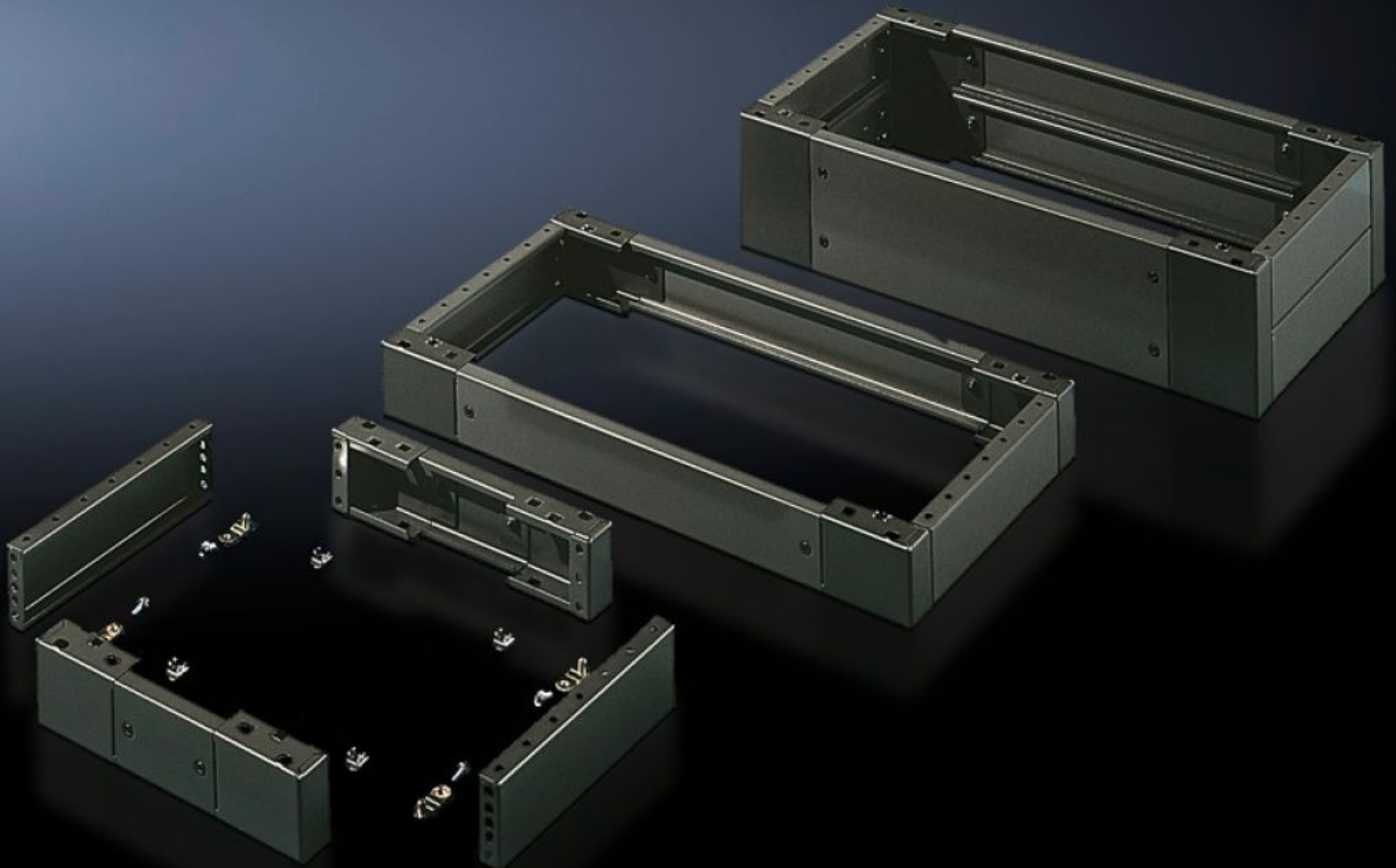


Rittal – The System.

Faster – better – everywhere.



SO 2826.200 Base/plinth, complete

State: 06.04.2026. (Source: rittal.com/hr-hr)

ENCLOSURES

POWER DISTRIBUTION

CLIMATE CONTROL

IT INFRASTRUCTURE

SOFTWARE & SERVICES

FRIEDHELM LOH GROUP



SO 2826.200 - Base/plinth, complete Sheet steel, for AE, universal consoles TP

Trim panels at the front and rear with fitted corner pieces and side trim panels.

Features

Model No.	SO 2826.200
Product description	Trim panels at the front and rear with fitted corner pieces and side trim panels.
Material	Sheet steel
Surface finish	Spray-finished
Colour	RAL 7022
Supply includes	4 corner pieces 2 trim panels front/rear 2 trim panels, side Assembly parts for mounting on the enclosure 1 trim panel front/rear x 200 mm 2 trim panels, front/rear, x 100 mm 4 trim panels, side, x 100 mm
Dimensions	Height: 200 mm Depth: 279 mm
To fit	Enclosure type: AE Width: = 600 mm Depth: = 300 mm
Packs of	1 pc(s).
Net weight	8,811 kg
Gross weight	9,275 kg
Customs tariff number	94039910
ETIM 9	EC000721
ETIM 8	EC000721
ECLASS 8.0	27182003

Features

Product description

AE Base/plinth, complete, for AE, for WD: 600x300 mm, H: 200 mm,
Sheet steel