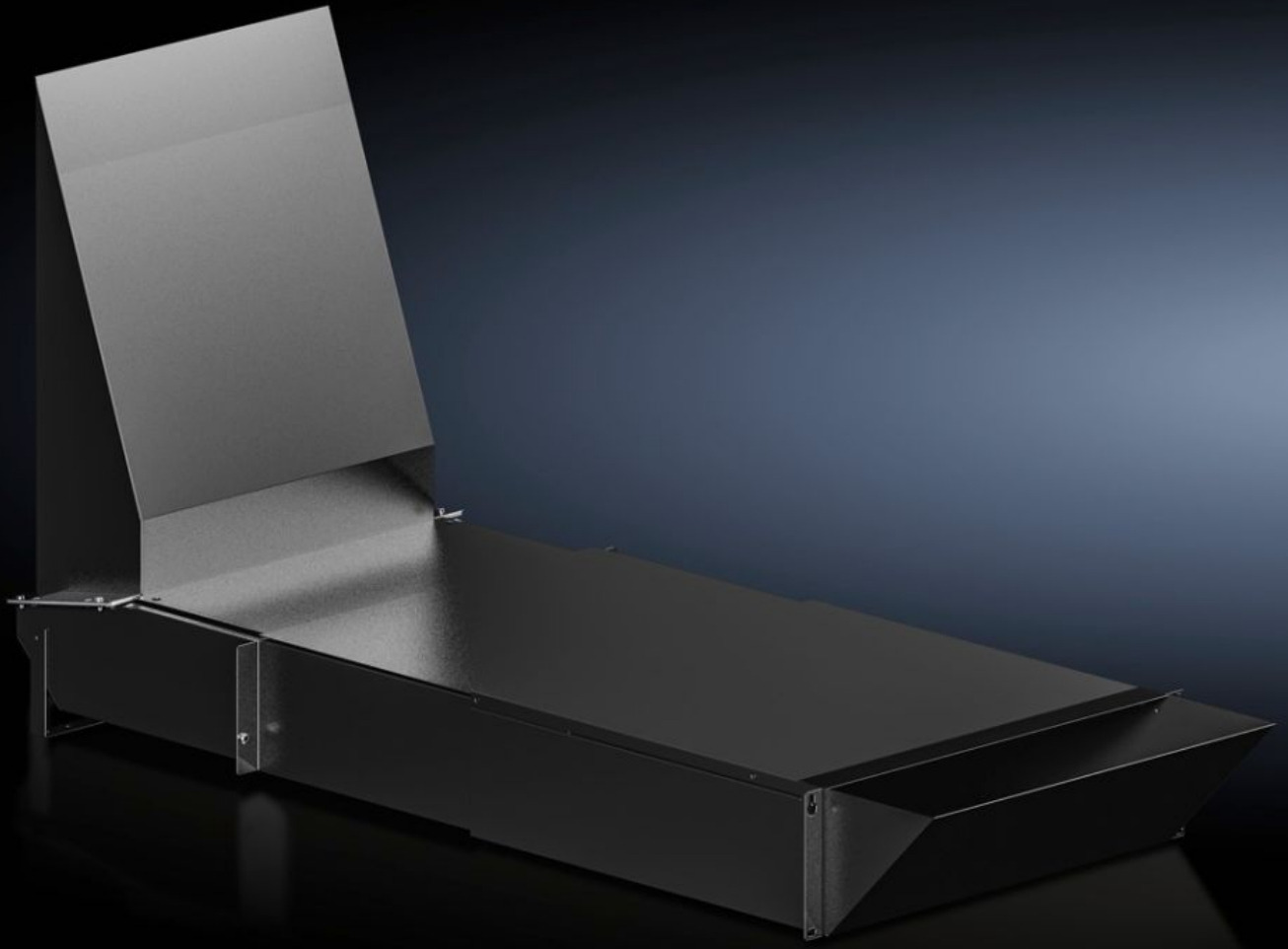


Rittal – The System.

Faster – better – everywhere.



SK 3312.820

Air duct

State: 13.04.2026. (Source: rittal.com/hr-hr)

ENCLOSURES

POWER DISTRIBUTION

CLIMATE CONTROL

IT INFRASTRUCTURE

SOFTWARE & SERVICES

FRIEDHELM LOH GROUP



SK 3312.820 - Air duct for wall-mounted cooling unit Blue e+ IT

For cold air infeed in front of the 482.6 mm (19") level in combination with the Blue e+ IT wall-mounted cooling unit.



Features

Model No.	SK 3312.820
Product description	For cold air infeed in front of the 482.6 mm (19") level in combination with the Blue e+ IT wall-mounted cooling unit.
Benefits	One air duct for different enclosure depths
Material	Sheet steel, spray-finished
Colour	RAL 9005
Supply includes	Assembly parts
Installation options	Mounting in the bottom 3 U of the 482.6 mm (19") level
Dimensions	Width: 482.6 mm Height: 3 U
To fit	Depth: = 800 mm = 1,000 mm = 1,200 mm
Packs of	1 pc(s).
Net weight	16,15 kg
Gross weight	17 kg
Customs tariff number	39269097
ETIM 9	EC011444

Features

ETIM 8	EC011444
ECLASS 8.0	22410601
Product description	SK IT air duct for Blue e+ wall cooling unit 3312.810, For usage in combination with Blue e+ wall cooling unit 3312.810, Installation in 19" frame
