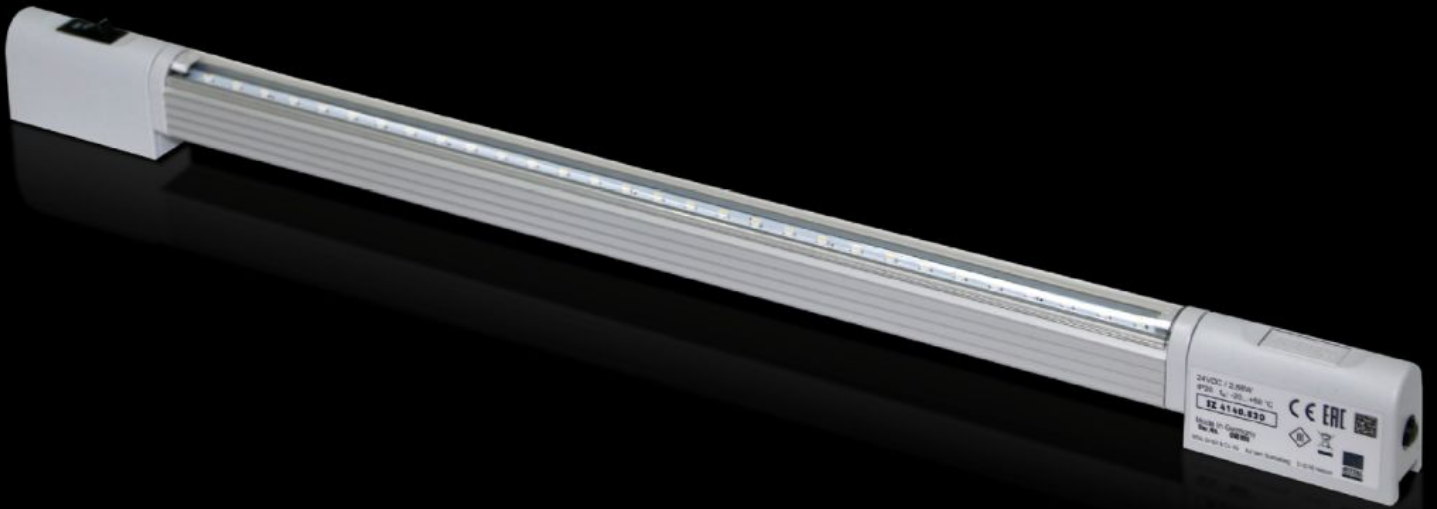


Rittal – The System.

Faster – better – everywhere.



SZ 4140.830

LED compact system light

State: 18.04.2026. (Source: rittal.com/hr-hr)

ENCLOSURES

POWER DISTRIBUTION

CLIMATE CONTROL

IT INFRASTRUCTURE

SOFTWARE & SERVICES

FRIEDHELM LOH GROUP



SZ 4140.830 - LED compact system light

Supply voltage: 24 V DC



Features

| | |
|--------------------------|---|
| Model No. | SZ 4140.830 |
| Benefits | Max. EMC capacity. Safe, thanks to operation in the extra-low safety voltage range. Economical energy use. Low-maintenance thanks to the use of LEDs. May be connected to a door-operated switch. |
| Function principle | Integral through-wiring. Universal attachment options. Vertically hinged light cone |
| Material | Light body: Extruded aluminium Light cover: Polycarbonate (halogen-free) Light ends: PC-ABS |
| Colour | Similar to RAL 7035 |
| Supply includes | LED compact system light Light Light cover Assembly parts |
| Mounting distance screws | 450 mm |

Features

| | |
|---|--|
| Connection options | Power supply via connectors Door-operated switch Through-wiring (creating rows of lights) |
| Light | LEDs, cold white |
| Protection class | III (SELV) |
| Switch (type) | Integral on/off/door-operated switch |
| Light cover | Yes |
| Light – installation type | Screw-fastening Clip attachment Magnetic attachment (accessory) |
| Rated impulse withstand voltage, phase to earth | Depending on the power pack |
| Rated impulse withstand voltage, phase to phase | Depending on the power pack |
| Rated insulation voltage | Depending on the power pack |
| Rated current max DC note | When configuring rows of lights, the maximum rated current is 2 amperes |
| With DC | 0,12 A |
| Number of LEDs | 30 |
| Mounting distance clip/magnet | 375 mm |
| Installation options | Directly onto the enclosure section with 25 mm pitch pattern Via mounting kit magnet AE: with rail for interior installation |
| Note | Only intended for use in enclosures and sealed cases When using on customer-supplied power packs, it is important to obtain the requisite approvals depending on the application When configuring rows of lights, the maximum rated current is 2 amperes |
| Light cone adjustment | Yes |
| Dimensions | Width: 430 mm Height: 32.8 mm Depth: 20.64 mm |

Features

| | |
|-------------------------------------|--|
| Rated operating voltage | 24 V (DC) |
| IP protection category to IEC 60529 | IP 20 |
| Packs of | 1 pc(s). |
| Net weight | 0,37 kg |
| Gross weight | 0,38 kg |
| Customs tariff number | 94054990 |
| ETIM 9 | EC000321 |
| ETIM 8 | EC000321 |
| ECLASS 8.0 | 27189241 |
| Product description | SZ System light LED compact, WHD: 430x33x21 mm, 24 V DC, Integral on/off/door-operated switch mode |

Approvals

| | |
|--------------|---|
| Explanations | Declaration of conformity Declaration of conformity UK |
|--------------|---|