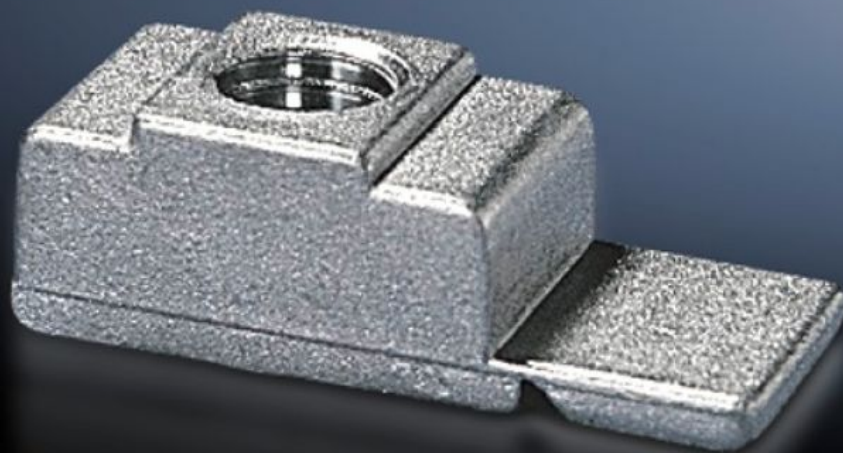


# Rittal – The System.

Faster – better – everywhere.



## TS 4162.000 Threaded blocks

State: 24.05.2026. (Source: [rittal.com/hr-hr](http://rittal.com/hr-hr))

ENCLOSURES

POWER DISTRIBUTION

CLIMATE CONTROL

IT INFRASTRUCTURE

SOFTWARE & SERVICES

FRIEDHELM LOH GROUP



# TS 4162.000 - Threaded blocks

Used on enclosures and rails with rectangular system punching 12.5 x 10.5 mm with snap-off insertion aid, die-cast zinc.



## Features

Model No.	TS 4162.000
Product description	With snap-off insertion aid, die-cast zinc.
Installation options	<ul style="list-style-type: none"><li>On the horizontal and vertical VX enclosure section</li><li>On the vertical TS, VX SE enclosure section via adaptor rails for VX compatibility</li><li>On the horizontal TS enclosure section</li><li>On the horizontal VX SE enclosure section, bottom</li><li>On the horizontal VX SE enclosure section, top in the depth</li><li>On punched rails 23 x 23 mm</li><li>On punched section without mounting flange, 23 x 73 mm</li><li>On punched section without mounting flange, 45 x 88 mm</li><li>On punched sections with mounting flanges, 23 x 64 mm</li><li>On punched sections with mounting flanges, 23 x 73 mm</li><li>On punched sections with mounting flanges, 23 x 89 mm, stainless steel</li><li>On enclosures and rails with rectangular system punching 12.5 x 10.5 mm.</li></ul>
Dimensions	Thread: M6
To fit enclosure type	VX TS VX SE
Thread	M6

# Features

Packs of	50 pc(s).
Net weight	0,45 kg
Gross weight	0,5 kg
Customs tariff number	73181692
ETIM 9	EC002358
ETIM 8	EC002358
ECLASS 8.0	23110815
Product description	TS Threaded block, for thread M6