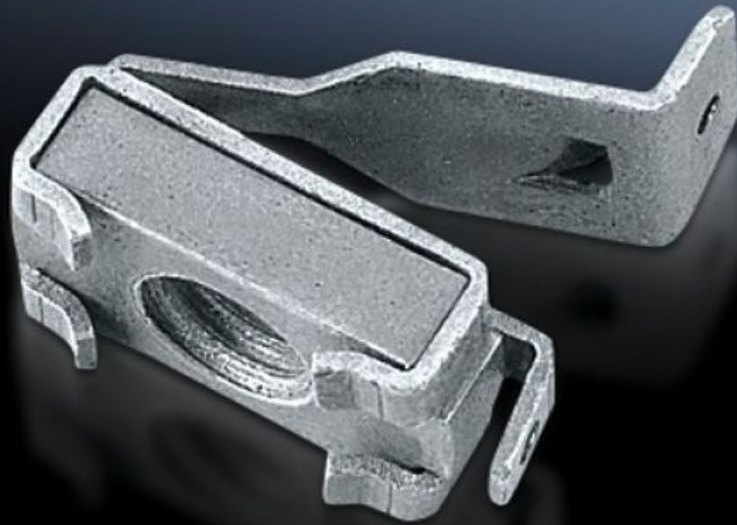


Rittal – The System.

Faster – better – everywhere.



TS 4164.000 Captive nuts

State: 06.04.2026. (Source: rittal.com/hr-hr)

ENCLOSURES

POWER DISTRIBUTION

CLIMATE CONTROL

IT INFRASTRUCTURE

SOFTWARE & SERVICES

FRIEDHELM LOH GROUP



TS 4164.000 - Captive nuts

Used on enclosures and rails with rectangular system punching 12.5 x 10.5 mm with compression spring, designed as an insertion aid for reliable mechanical and electrical connection in the system punchings.



Features

Model No.	TS 4164.000
Product description	The compression spring, designed as an insertion aid, ensures reliable mechanical and electrical connection in the system punchings.
Installation options	On the vertical TS, VX SE enclosure section via adaptor rails for VX compatibility On the horizontal TS enclosure section On the horizontal VX SE enclosure section, bottom On the horizontal VX SE enclosure section, top in the depth On punched rails 23 x 23 mm On punched section without mounting flange, 23 x 73 mm On punched section without mounting flange, 45 x 88 mm On punched sections with mounting flanges, 23 x 73 mm On enclosures and rails with rectangular system punching 12.5 x 10.5 mm.
Dimensions	Thread: M6
Thread	M6
Packs of	50 pc(s).
Net weight	0,4 kg
Gross weight	0,463 kg

Features

Customs tariff number	73181692
ETIM 9	EC002358
ETIM 8	EC002358
ECLASS 8.0	23110815
Product description	TS Captive nut, for thread M6, for clamping and insertion from the side