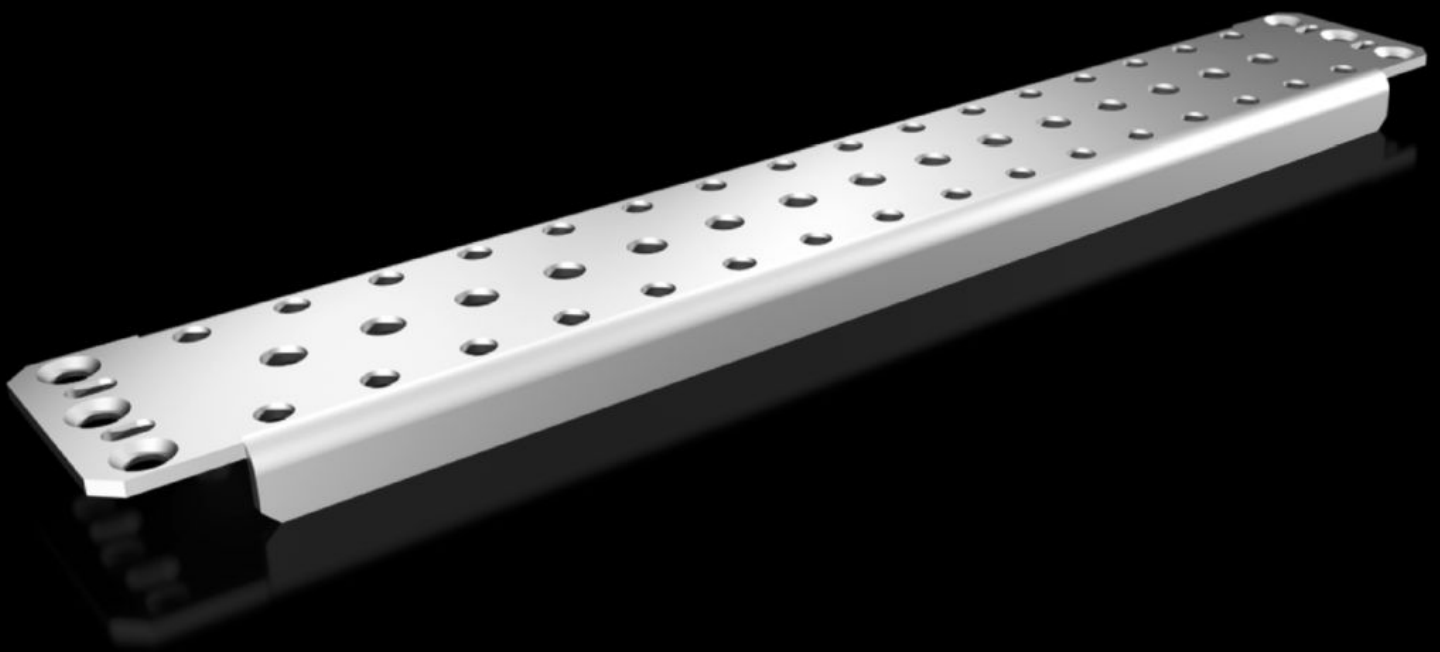


Rittal – The System.

Faster – better – everywhere.



TS 4395.000

Support rail 75 x 20 mm

State: 22.05.2026. (Source: rittal.com/hr-hr)

ENCLOSURES

POWER DISTRIBUTION

CLIMATE CONTROL

IT INFRASTRUCTURE

SOFTWARE & SERVICES

FRIEDHELM LOH GROUP



TS 4395.000 - Support rail 75 x 20 mm for VX, TS, VX SE

For heavy installed equipment such as base isolators or transformers.



Features

Model No.	TS 4395.000
Design	Slotted
Product description	For heavy installed equipment such as base isolators or transformers.
Material	Sheet steel
Surface finish	Zinc-plated
Supply includes	Assembly parts
Installation options	On the inner mounting level of the VX enclosure section On the vertical TS enclosure section via snap-on nuts TS 8800.808 or adaptor rails for VX compatibility, height-offset, via TS punched rail 25 x 38 mm On the horizontal TS enclosure section: in the width, in the depth On the VX SE enclosure section in the width (bottom and top) or in the depth (bottom and top) via snap-on nuts 8800.808.
To fit	Enclosure type: VX TS VX SE Width: = 500 mm Depth: = 500 mm
Packs of	4 pc(s).
Net weight	5,008 kg

Features

Gross weight	5,4 kg
PCF per pack (cradle-to-gate)	25.55 kg CO2 eq (Cat B)
Note on PCF category	Category B: PCF value (cradle-to-gate) based on the product weight, approximately calculated and self-declared
Customs tariff number	73269098
ETIM 9	EC001285
ETIM 8	EC001285
ECLASS 8.0	27189261
Product description	TS Support rail, for VX, TS, VX SE, for W/D: 500 mm, slotted

Approvals

Explanations	PCF-declaration
--------------	-----------------