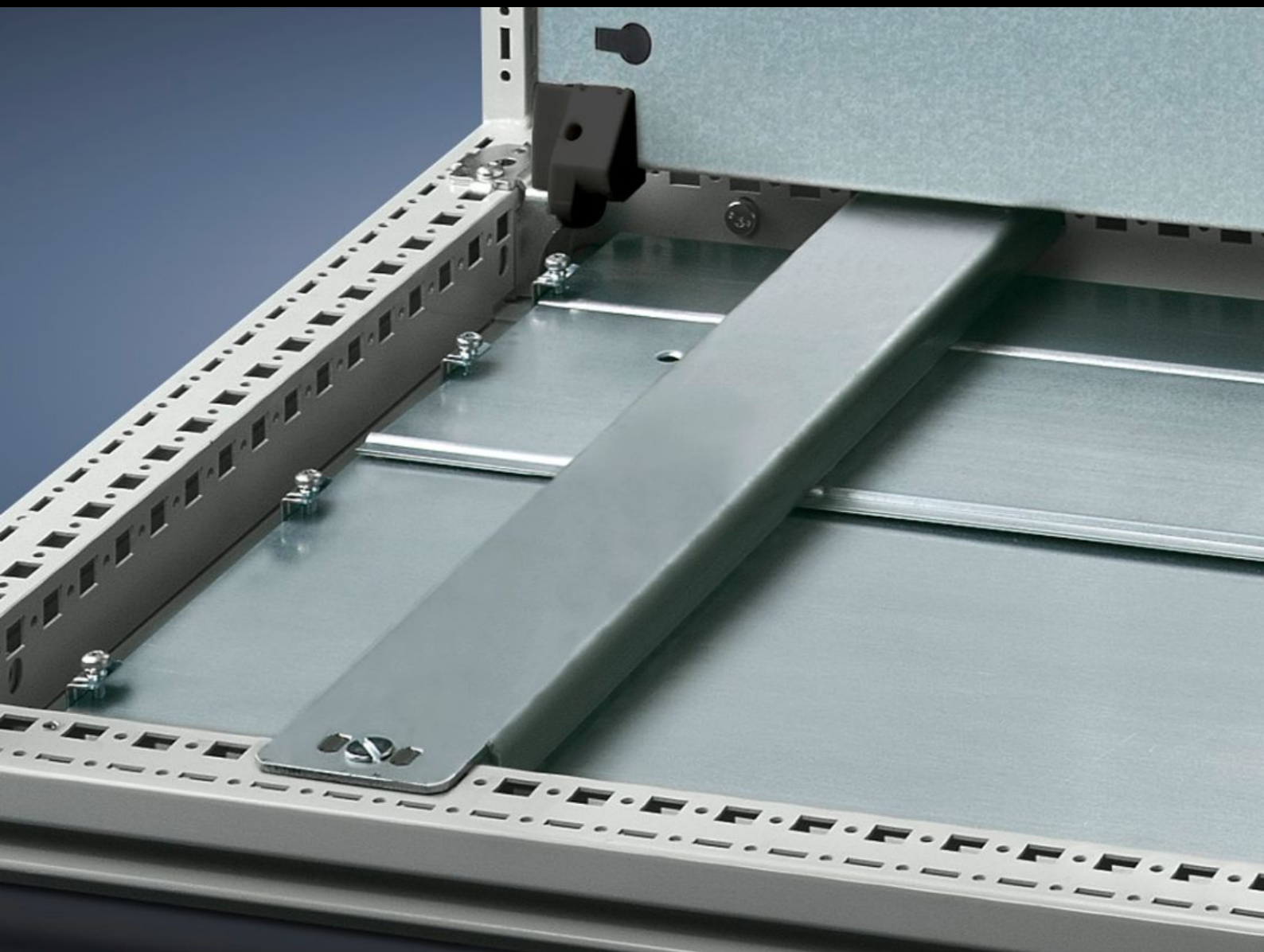
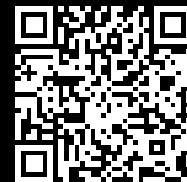


Rittal – The System.

Faster – better – everywhere.



TS 4396.500

Support rail 75 x 20 mm

State: 11.09.2025. (Source: [rittal.com/hr-hr](https://www.rittal.com/hr-hr))

ENCLOSURES

POWER DISTRIBUTION

CLIMATE CONTROL

IT INFRASTRUCTURE

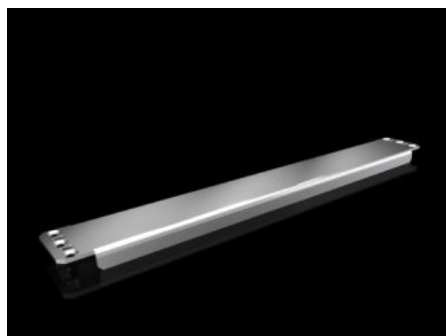
SOFTWARE & SERVICES

FRIEDHELM LOH GROUP



TS 4396.500 - Support rail 75 x 20 mm for VX, TS, VX SE

For heavy installed equipment such as base isolators or transformers.



Features

| | |
|----------------------|---|
| Model No. | TS 4396.500 |
| Design | unslotted |
| Product description | For heavy installed equipment such as base isolators or transformers. |
| Material | Sheet steel |
| Surface finish | Zinc-plated |
| Supply includes | Assembly parts |
| Installation options | On the inner mounting level of the VX enclosure section On the vertical TS enclosure section via snap-on nuts TS 8800.808 or adaptor rails for VX compatibility, height-offset, via TS punched rail 25 x 38 mm On the horizontal TS enclosure section: in the width, in the depth On the VX SE enclosure section in the width (bottom and top) or in the depth (bottom and top) via snap-on nuts 8800.808. |
| To fit | Enclosure type: VX TS VX SE Width: = 600 mm Depth: = 600 mm |
| Packs of | 4 pc(s). |
| Net weight | 6.36 |

Features

| | |
|-------------------------------|--|
| Gross weight | 7.16 |
| PCF per pack (cradle-to-gate) | 27.2 kg CO2 eq (Cat B) |
| Note on PCF category | Category B: PCF value (cradle-to-gate) based on the product weight, approximately calculated and self-declared |
| Customs tariff number | 73269098 |
| EAN | 4028177522787 |
| ETIM 9 | EC001285 |
| ETIM 8 | EC001285 |
| ECLASS 8.0 | 27189261 |