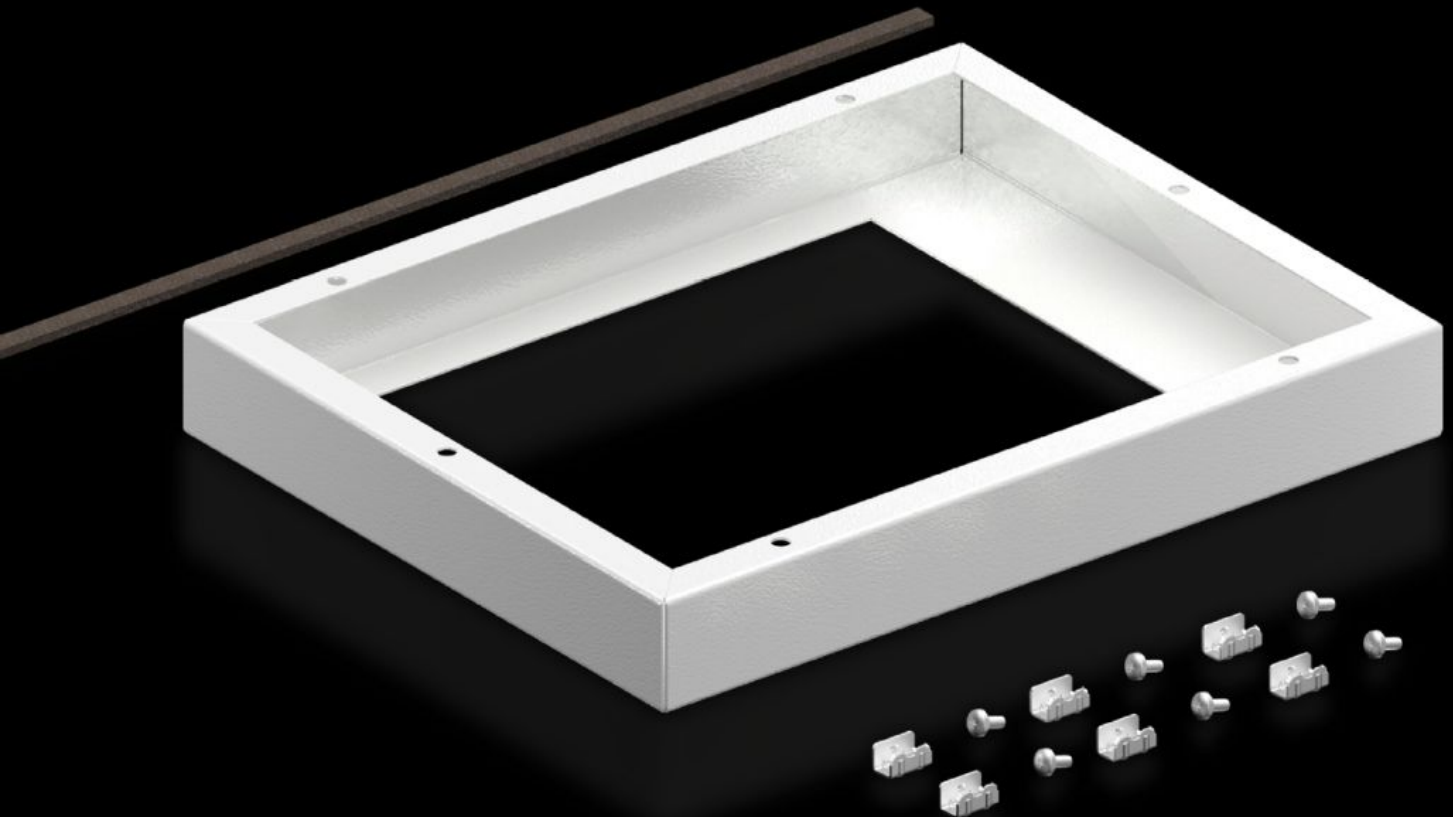


Rittal – The System.

Faster – better – everywhere.



SK 5050.701

Adaptor frame for roof-mounted fans

State: 15.06.2026. (Source: rittal.com/hr-hr)

ENCLOSURES

POWER DISTRIBUTION

CLIMATE CONTROL

IT INFRASTRUCTURE

SOFTWARE & SERVICES

FRIEDHELM LOH GROUP



SK 5050.701 - Adaptor frame for roof-mounted fans

For mounting the latest generation of roof-mounted fans on roof plates with cut-out provided.
With cut-out W x D 258 x 258 mm.

Features

Model No.	SK 5050.701
Supply includes	Assembly parts
Mounting cut-out	Width:258 mm Depth:258 mm
Dimensions	Width: 515 mm Height: 50 mm Depth: 300 mm
Packs of	1 pc(s).
Net weight	2,76 kg
Gross weight	2,96 kg
Customs tariff number	84145915
ETIM 9	EC000320
ECLASS 8.0	29170101
Product description	SK Adaptor for roof mounted fan, , WxD 515x300mm, cutout WxD 258x258mm, for old cutout: WxD 475x260mm, for old roof mounted fan: 3149410, 3149420, 3149440,