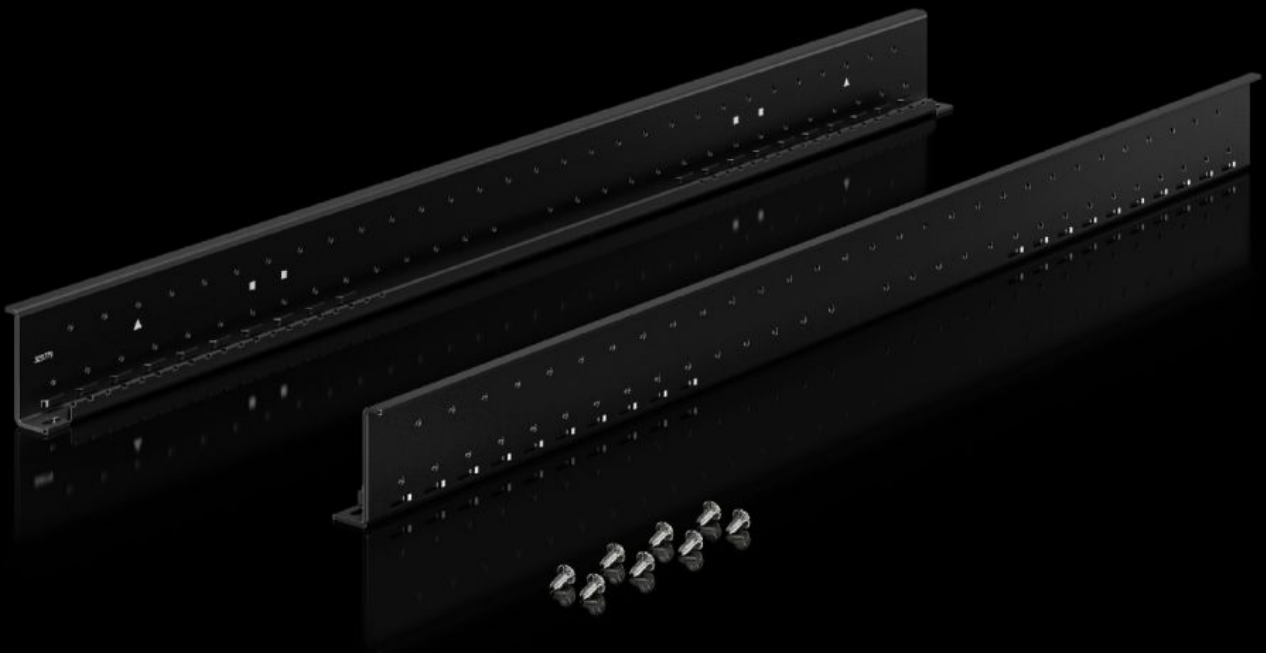


Rittal – The System.

Faster – better – everywhere.



VX 5302.111 Depth stays

State: 25.05.2026. (Source: rittal.com/hr-hr)

ENCLOSURES

POWER DISTRIBUTION

CLIMATE CONTROL

IT INFRASTRUCTURE

SOFTWARE & SERVICES

FRIEDHELM LOH GROUP



VX 5302.111 - Depth stays for 482.6 mm (19") mounting angles

L-shaped mounting angles, also for accommodating server system installation kits.

Features

Model No.	VX 5302.111
Design	for VX IT 482.6 mm (19") mounting angles, standard
Product description	To accommodate 19" mounting angles.
Benefits	Particularly high load capacity up to 15,000 N Enhanced stability thanks to improved load distribution Symmetrical or asymmetrical installation supported More space for cable routing or integration of a Liquid Cooling Unit (LCU) with one-sided, asymmetrical (laterally offset) installation Ideal for integrating 482.6 mm (19") mounting angles for alternative installation with 21", 23", or 24" components
Material	Sheet steel
Surface finish	Spray-finished
Colour	RAL 9005
Supply includes	Depth stays Assembly parts 4 support strips (2 top, 2 bottom)
Assembly instruction	For the attachment of mounting angles in enclosures that are greater than 1000 mm deep and greater than 600 mm wide, an additional support rail for VX IT is required
To fit	Enclosure type: VX IT, standard Width: > 600 mm Depth: = 1,000 mm
Packs of	4 pc(s).
Net weight	8,8 kg
Gross weight	9,1 kg

Features

PCF per pack (cradle-to-gate)	34.7 kg CO2 eq (Cat B)
Note on PCF category	Category B: PCF value (cradle-to-gate) based on the product weight, approximately calculated and self-declared
Customs tariff number	73269098
ETIM 9	EC002620
ECLASS 8.0	27189261
Product description	Depth stays to accommodate 482.6 mm (19") mounting angles. For enclosure width: = > 600 mm, for enclosure depth: = 1,000 mm, sheet steel, spray-finished, RAL 9005

Approvals

Explanations	Manufacturer's declaration
--------------	----------------------------